

OUR PRODUCT HIGHLIGHTS

EN

NETWORK TECHNOLOGY • NETWORK- &
SERVER RACKS • AV- & MEDIA TECHNOLOGY
• CABLES & PERIPHERALS



POWERFUL IT INFRASTRUCTURE

FOR INTELLIGENT NETWORKED WORKING ENVIRONMENTS

ASSMANN Electronic GmbH, based in Lüdenscheid, North Rhine-Westphalia, was founded in 1969 and today - as part of the ASSMANN Holding GmbH - an internationally operating solution provider for high-quality server, network and peripheral infrastructure products. Ten other subsidiaries are united under the umbrella of the holding company with locations in:

Austria, Switzerland, France, Spain, Croatia, Poland, Turkey, China, Taiwan and Hong Kong.

The diverse product portfolio of the established DIGITUS® own brand is sold worldwide via IT distributors, system integrators, electrical wholesalers, the eCommerce channel and corporate resellers.



DIGITUS® by ASSMANN

Whether in the public sector, industry, large corporations or individual offices - with the DIGITUS® range, ASSMANN offers its customers structured building cabling and enables them to network modern working environments smartly.

This includes products and solutions for:

- Data network technology
- Network and server cabinets
- Installation cables and accessories
- Active and passive network components

Digital expertise – ASSMANN

Customers benefit not only from the comprehensive, certified and compatible product range, with which they can cover all requirements, but in particular from the many innovative digital services, e-tools and trade marketing measures that ASSMANN offers them tailored to optimise their joint online business.

These include target group-specific customisable product finders for online shops that can be implemented on the customer website, clever direct shop integrations of the DIGITUS® brand world and practical article master data downloads such as ETIM.

With the multi-layered product expert know-how of its ASSMANN continues to drive its sustainable growth at an international level.

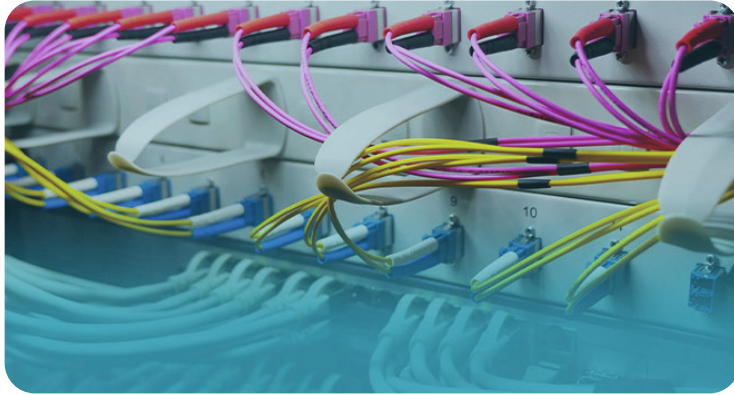
DIGITUS®

TABLE OF CONTENTS



NETWORK- & SERVER RACKS

- Network Cabinets - Wall Mounting
- Server Cabinets - Freestanding
- Cabinet Accessories
- Uninterruptible Power Supply (UPS)
- KVM Consoles
- Charging Cabinets



NETWORK TECHNOLOGY

- Copper Cabling
- Fiber Cabling
- Industrial Components
- Network Switches
- Industrial Network Switches
- Network Switches



AV- & MEDIA TECHNOLOGY

- AV Extenders
- AV Repeaters
- AV Converters
- AV Splitters
- AV Matrices
- AV Switches
- Conferencing Solutions
- Display Mounting Systems



CABLES & PERIPHERALS

- Audio Video Cables and Adapters
- USB Cables
- Other Cables and Adapter
- USB Devices and Accessories
- Charging Solutions
- Computer Accessories
- Workstations



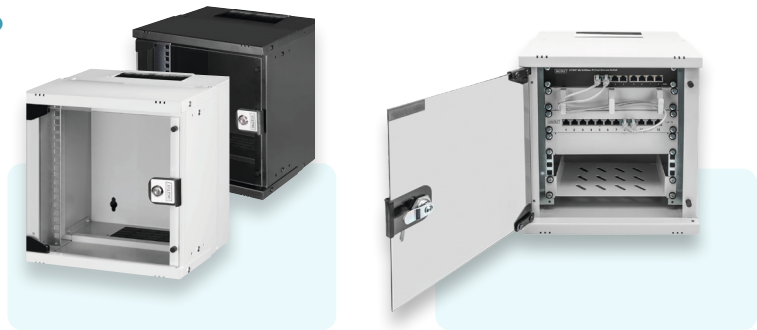
DIGITUS® NETWORK- & SERVER RACKS



DIGITUS® Wall-Mounted Enclosure Soho Pro 254 mm (10") - 315x300 mm (WxD)

10" 6U wall mounting cabinet, SOHO Pro 325 x 315 x 300 mm, unmounted, grey

The DIGITUS® wall-mounted enclosure SOHO Pro series is characterized by efficient delivery in an optimized flat pack and particularly user-friendly installation.



Technical details

- Compact housing for installations where space is limited
- Simplified logistics: delivered unassembled in an optimized flat pack
- Quickly ready for use: Particularly user-friendly, quick installation with just a few screws
- Flexible cable routing options thanks to protected openings in the roof and floor

DN-49100 | EAN 4016032493624 | 10" 6U wall mounting cabinet, SOHO Pro 325 x 315 x 300 mm, unmounted, grey

DN-49101 | EAN 4016032493631 | 10" 6U wall mounting cabinet, SOHO Pro 325 x 315 x 300 mm, unmounted, black

DIGITUS® Wall-Mounted Enclosure Soho Pro 483 mm (19") - 540x400 mm (WxD)

19" 7U wall mounting cabinet, SOHO Pro 370 x 540 x 400 mm, unmounted, grey

The DIGITUS® wall-mounted enclosure SOHO Pro series is characterized by efficient delivery in an optimized flat pack and particularly user-friendly installation.



Technical details

- Compact housing for 483 mm (19") installations
- Simplified logistics: delivered unassembled in an optimized flat pack
- Quickly ready for use: Particularly user-friendly, quick installation with just a few screws
- Flexible cable routing options thanks to protected openings in the roof and floor

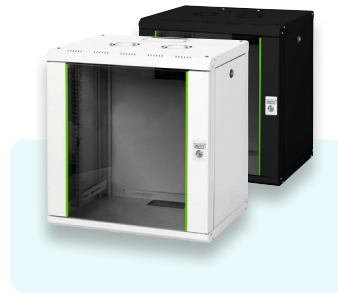
DN-49202 | EAN 4016032493709 | 19" 7U wall mounting cabinet, SOHO Pro 370 x 540 x 400 mm, unmounted, grey

DN-49203 | EAN 4016032493716 | 19" 7U wall mounting cabinet, SOHO Pro 370 x 540 x 400 mm, unmounted, black

DIGITUS® Wall Mounting Cabinet Unique Series 600x450 mm (WxD)

12U wall mounting cabinet, Unique
643x600x450 mm, color grey (RAL 7035)

The DIGITUS® Unique Series is made for high demand IT-Infrastructure Solutions - designed and developed on highest standard in Germany



Technical details

- Safety class rating IP20
- Lockable safety-glass door with steel frame
- 210° door opening angle
- 1-point-locking-mechanism on the front door
- Side panels are lockable and removable
- 483 mm (19") profile rails mounted on the front- and rear side inside of the rack, galvanized

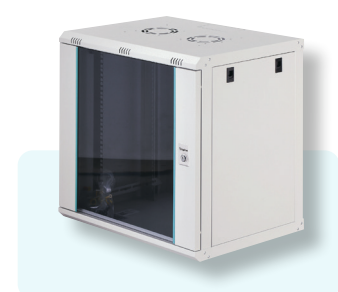
DN-19 12-U | EAN 4016032135227 | 12U wall mounting cabinet, Unique 643x600x450 mm, color grey (RAL 7035)



DIGITUS® Wall-Mounted Enclosure Dynamic-N 600x450 mm (WxD)

12U wall-mounted enclosure, Dynamic-N
607x600x450 mm, color gray (RAL7035)
or black (RAL 9005)

Future-oriented standards and high-end quality for your network.



Technical details

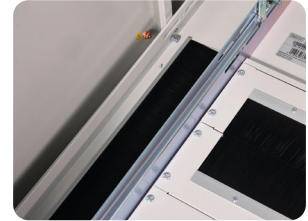
- The 19-inch IT rack has 12 U (height units) for mounting network and server components as well as components for audio applications - The maximum installation depth is 32 cm
- Pre-punched openings in the base, roof, and rear panel are provided for cable entry and can be opened as required
- The wall-mounted enclosure is delivered unassembled for optimized transport.
- Assembly is quick and easy

DN-37108 | EAN 4016032221715 | 12U wall-mounted enclosure, Dynamic-N 607x600x450 mm, color gray (RAL 7035)

DIGITUS® Network Cabinet Unique Series 800x1000 mm (WxD)

42U network rack, Unique 2053x800x1000 mm, color grey (RAL 7035)

The DIGITUS® network cabinets of the Unique series combine maximum stability with optimum flexibility in cable management, for the high demands of modern IT infrastructure with a wide variety of application scenarios.



Technical details

- High load capacity of the 483 mm (19") profile rails of up to 1200 kg
- Vertical cable ducts with cable routing aids
- and cover installed in the front panel
- Modular, openable base chassis with removable 19" blind panels
- Swivel handle with profile half-cylinder lock incl. type 333 key on the front door

DN-19 42U-8/10-1 | EAN 4016032331186 | 42U network rack, Unique 2053x800x1000 mm, color grey (RAL 7035)

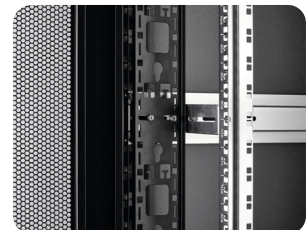
DN-19 42U-8/10-B-1 | EAN 4016032332442 | 42U network rack, Unique 2053x800x1000 mm, color black (RAL 9005)



DIGITUS® Server Cabinet Unique Server-N Series 800x1000 mm (WxD)

42U server cabinet, Unique Server-N 2053x800x1000 mm, black (RAL 9005)

The DIGITUS® server cabinets of the Unique Server-N series combine maximum stability with optimum flexibility in cable management, for the high demands of modern IT infrastructure with a wide variety of application scenarios.



Technical details

- High load capacity of the 483 mm (19") profile rails of up to 1200 kg
- Swivel handle with profile half-cylinder lock incl. type 333 key on the front and rear door
- Modular, openable base chassis with removable 19" blind panels
- Flexible cable routing options thanks to generous cable inlets with brushes in the floor and roof
- Vertical cable ducts with cable routing aids and cover installed in the front panel

DN-31303-B | EAN 4016032505143 | 42U server cabinet, Unique Server-N 2053x800x1000 mm, black (RAL 9005)

DIGITUS® Network Cabinet Unique Light Series
800x800 mm (WxD)

42U network cabinet, Unique Light 2053x800x800 mm, grey (RAL 7035)

The DIGITUS® network cabinets of the Unique Light series combine high stability with great flexibility in cable management, for the high demands of modern IT infrastructure with the most diverse application scenarios.



Technical details

- Load capacity of the 483 mm (19") profile rails of up to 800 kg
- Swivel handle with profile half-cylinder
- lock incl. type 333 key on the front door
- Modular, openable base chassis with removable 19" blind panels
- Flexible cable routing options thanks to generous cable inlets with brushes in the roof and floor

DN-31200 | EAN 4016032505006 | 42U network cabinet, Unique Light 2053x800x800 mm, grey (RAL 7035)

DIGITUS® Charging Trolley
for 30 Notebooks / Tablets up to 16 inch, USB-C

Charging trolley, 16", USB-C 30 charge bases, PDU, fan, 1260 x 824 x 650 mm

The ideal solution for storing and charging your portable devices.



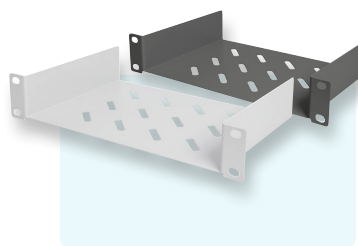
Technical details

- 30 stations (3x10) for devices
- 30 x USB-C connection 18W (5V/3A, 9V/2A, 12V/1.5A)
- 3 x socket strip installed on the back (10 x safety sockets)
- Cable feedthrough and excessive cable storage on each level
- Compact housing, mobile thanks to installed rollers

DN-45006 | EAN 4016032494546 | Charging trolley, 16", USB-C 30 charge bases, PDU, fan, 1260 x 824 x 650 mm

DIGITUS® 254 mm (10")
1U shelf

254 mm (10") 1U fixed shelf 44x254x150 mm, color grey (RAL 7035)



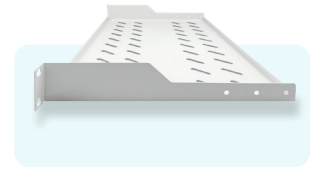
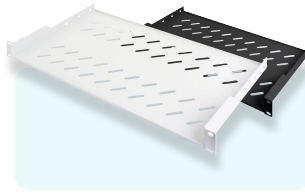
Technical details

- Storage for accessories or components in the 254 (10") cabinet without own installation option
- Simple 2-point attachment to the 254 mm (10") profile rails via integrated mounting brackets with two screw holes each
- Slim design that only takes up 1 height unit
- Installation depth: 150 mm
- Load capacity of up to 25 kg

DN-10 TRAY-1 | EAN 4016032139836 | 254 mm (10") 1U fixed shelf 44x254x150 mm, color grey (RAL 7035)

DIGITUS® Shelf For Fixed Installation in 483 mm (19") cabinets

1U fixed shelf for racks from 400 mm depth
45x482x250 mm, up to 15 kg, grey (RAL 7035)



Technical details

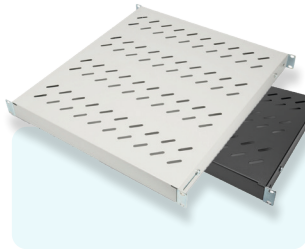
- Storage for accessories or components in the 483 (19") cabinet without own installation option
- Simple 2-point attachment to the 483 mm (19") profile rails via integrated mounting brackets with two screw holes each
- Robust sheet steel construction with
- Slim design that only takes up 1 height unit
- Installation depth: 250 mm
- Load capacity of up to 15 kg

DN-97609 | EAN 4016032275084 | 1U fixed shelf for racks from 400 mm depth 45x482x250 mm, up to 15 kg, grey (RAL 7035)

DIGITUS® Shelf With Variable Rails For Fixed Mounting in 483 mm (19") Cabinets

1U fixed shelf for 800 mm depth racks 43x484x508 mm, adjust. up to 700 mm depth, grey

Future-oriented standards and high-end quality for your network.



Technical details

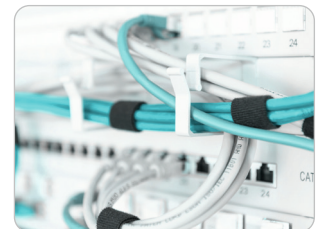
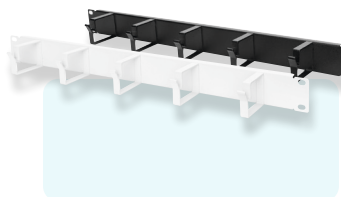
- for fixed mounting on the four 483 mm (19") profile rails
- sturdy, perforated steel sheet
- incl. fixing material, M6
- 4-point fixing (front- & rear 19" profile rails)
- Attributes

DN-97646 | EAN 4016032364986 | 1U fixed shelf for 800 mm depth racks 43x484x508 mm, adjust. up to 700 mm depth, grey

DIGITUS® Cable Routing Panel With Cable Routing Brackets for 483 mm (19") cabinets, 1U

1U cable management panel 5x cable rings 40x60 mm, color grey (RAL 7035)

Future-oriented standards and high-end quality for your network.



Technical details

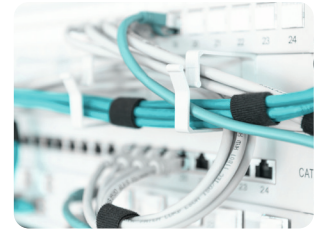
- Enables horizontal cable routing within the 483 mm (19") network or server enclosure
- 5 robust aluminum cable guide rings (40 x 60 mm) for patch cable routing
- Slim design that only takes up 1 height unit
- Ready for immediate use: Fastening material is supplied (cage nuts, screws, washers)

DN-97601 | EAN 4016032266440 | 1U cable management panel 5x cable rings 40x60 mm, color grey (RAL 7035)

DIGITUS® Cable Brush Strip For 483 Mm (19") Cabinets

1U cable brush management panel open brush, color black (RAL 9005)

Future-oriented standards and high-end quality for your network.



Technical details

- Enables orderly cable routing within the 483 mm (19") network or server enclosure
- 27x423 mm opening with brushes to protect the cables from damage
- Slim design that only takes up 1 height unit
- Ready for immediate use: Fastening material is supplied (cage nuts, screws, washers)

DN-97661 | EAN 4016032430605 | 1U cable brush management panel open brush, color black (RAL 9005)

DIGITUS® Roof-Mounted Fan Unit for 483 mm (19") wall-mounted housing

Roof vent. unit, wall mounting cabinets 2 fans, thermostat, switch, grey (RAL 7035)

The DIGITUS® 483 mm (19") accessories have been developed for the high demands of IT infrastructure and are manufactured to German quality standards.



Technical details

- Simple installation in the roof module of the 19" wall-mounted housing
- Fan with contact protection due to grille cover
- incl. thermostat, adjustable from 0 °C to +70 °C
- 2 fans
- On/off switch
- Noise level of fan unit with two built-in fans: 55-60 dB
- Noise level of a single fan in the fan unit: 50-55 dB

DN-19 FAN-2-WM-T | EAN 4016032158752 | Roof vent. unit, wall mounting cabinets 2 fans, thermostat, switch, grey (RAL 7035)

DN-19 FAN-2-WM-T-SW | EAN 4016032250586 | Roof vent. unit, wall mounting cabinets 2 fans, thermostat, switch, black (RAL 9005)

DIGITUS® Roof-mounted fan unit for Unique & Unique Light network enclosures and Unique Server-N server enclosures

Roof ventilation unit, 4 fans, grey for Unique, Unique Light, Unique Server-N

DIGITUS® 483 mm (19") accessories are designed to meet the high demands of IT infrastructure and are manufactured to German quality standards.



Technical details

- Simple installation in the roof module of the 19" enclosure
- 4 fans
- Fan with contact protection due to grille cover
- incl. thermostat, adjustable from 0 °C to +70 °C
- On/off switch
- Noise level of fan unit with four built-in fans: 60-65 dB
- Noise level of a single fan in the fan unit: 50-55 dB

DN-19 FAN-4-N | EAN 4016032331247 | Roof ventilation unit, 4 fans, grey for Unique, Unique Light, Unique Server-N

DN-19 FAN-4-B-N | EAN 4016032332855 | Dachlüftereinheit, 4 Lüfter, schwarz für Unique, Unique Light, Unique Server-N

DIGITUS® Online UPS System 3000 VA / 3000 W

OnLine UPS Module, 1500VA/1500W

The OnLine UPS is an ideal backup solution for your demanding power requirements and offers high reliability in various industrial applications.



Technical details

- High power factor (1.0), a higher active power enables more connected loads, which saves space and reduces costs.
- High efficiency in online mode, higher efficiency means optimized energy management and lower heat dissipation, resulting in energy savings and improved reliability.
- User-friendly LCD screen provides insight into UPS status for easy installation, configuration and operation.
- Compact rack/tower design optimizes installation space in the rack and enables flexible installation.
- Minimize device downtime with hot-swappable, user-replaceable battery modules that can be replaced during operation.
- External battery modules allow the runtime to be extended.
- High number of outlets (8 x C13) for optimum power distribution to the consumers.
- Various communication interfaces (RS232/USB, parallel port, SNMP slot) enable remote monitoring of the system.
- Automatic battery self-test and fan speed control increase the service life of the components.
- The REPO function (Remote Emergency Power Off) switches the UPS off in the event of an emergency. If an emergency occurs, the REPO switch turns off the rectifier and the inverter and immediately stops the power supply to the load. The UPS stops charging.

DN-170094 | EAN 4016032474654 | DIGITUS® OnLine UPS Module, 1500VA/1500W

DN-170106 | EAN 4016032473541 | DIGITUS® OnLine UPS-System, 6 kVA/ 6 kW

DN-170107 | EAN 4016032473558 | DIGITUS® OnLine UPS-System, 10 kVA/ 10 kW

DN-170096 | EAN 4016032474678 | DIGITUS® OnLine UPS Module, 3000VA/3000W

DN-170108 | EAN 4016032473596 | Battery module with internal battery (20pcs)

DN-170123 | EAN 4016032487463 | External battery module for DN-170096

DIGITUS® Line-interactive UPS 2000 VA/1200 W

Line-Interactive UPS, 2000VA/1200W 12V/9Ah x2 battery, 4x CEE 7/7, USB, RS232, RJ45, LCD

Provides reliable protection against data loss and voltage damage in the office and home office



Technical details

- Buck/boost converter to stabilize the voltage
- Fast bridging time in the event of power failures
- Compact housing for space-saving installation in your IT infrastructure
- Fast loading time
- Generates a low noise level of less than 40 dB

DN-170076 | EAN 4016032441380 | Line-Interactive UPS, 2000VA/1200W 12V/9Ah x2 battery, 4x CEE 7/7, USB, RS232, RJ45, LCD

DN-170074 | EAN 4016032441366 | Line-Interactive UPS, 1000VA/600W 12V/7Ah x2 battery, 4x CEE 7/7, USB, RS232, RJ45, LCD

DN-170075 | EAN 4016032441373 | Line-Interactive UPS, 1500VA/900W 12V/9Ah x2 battery, 4x CEE 7/7, USB, RS232, RJ45, LCD

DIGITUS® All-in-one UPS
800VA/480W, LED

All-in-One UPS, 800VA/480W, LED 12V/9Ah x1, 4x CEE 7/7, 3x IEC C13, USB, RJ45

Reliable protection against data and power failure, surge damage for your connected devices



Technical details

- Microprocessor-controlled control unit guarantees high reliability
- Line-interactive with AVR boost and buck - Automatic voltage regulation
- Space-saving: also suitable for wall mounting
- Integrated charger for mobile devices (USB)
- Auto-restart: Automatic switch-off function after battery discharge, automatic switch-on as soon as the mains connection is supplied with power again
- Auto-charging: Automatic charging function when switched off

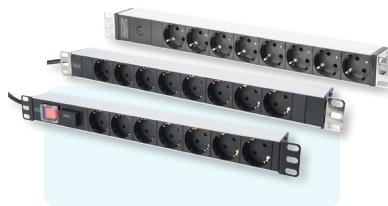
DN-170110 | EAN 4016032456582 | All-in-One UPS, 600VA/360W, LED 12V/7Ah x1, 4x CEE 7/7, 3x IEC C13, USB, RJ45

DN-170111 | EAN 4016032456582 | All-in-One UPS, 800VA/480W, LED 12V/9Ah x1, 4x CEE 7/7, 3x IEC C13, USB, RJ45

DIGITUS® Aluminum Outlet Strip With Switch
7 Safety Outlets, 2 m supply with surge protection

1U Aluminum PDU, rackmountable, 7x safety outlet 16A Plug, 250VAC 50/60Hz, switch, surge Protection

Safe and professional power in the 482.6 mm (19") range



Technical details

- Additional Features: Power switch, Overvoltage protection
- Current: 16 A
- Input Plug: CEE7/7
- Installation: Rack 1U
- Outlets: CEE 7/3
- Phase: 1ph
- Power: 3,6 kVA
- Volts: 230 V

DN-95407 | EAN 4016032339335 | 1U Aluminum PDU, rackmountable, 7x safety outlet 16A Plug, 250VAC 50/60Hz, switch, surge Protection

DN-95401 | EAN 4016032266396 | 1U Aluminum PDU, rackmountable, 8x safety outlet 16A, 4000W, 250VAC 50/60Hz

DN-95410-XX | EAN 4016032483861 | 1U Aluminum PDU, 8x Italian outlets, Pre-fuse 10A Plug, 250VAC 50/60Hz, IEC C14 plug

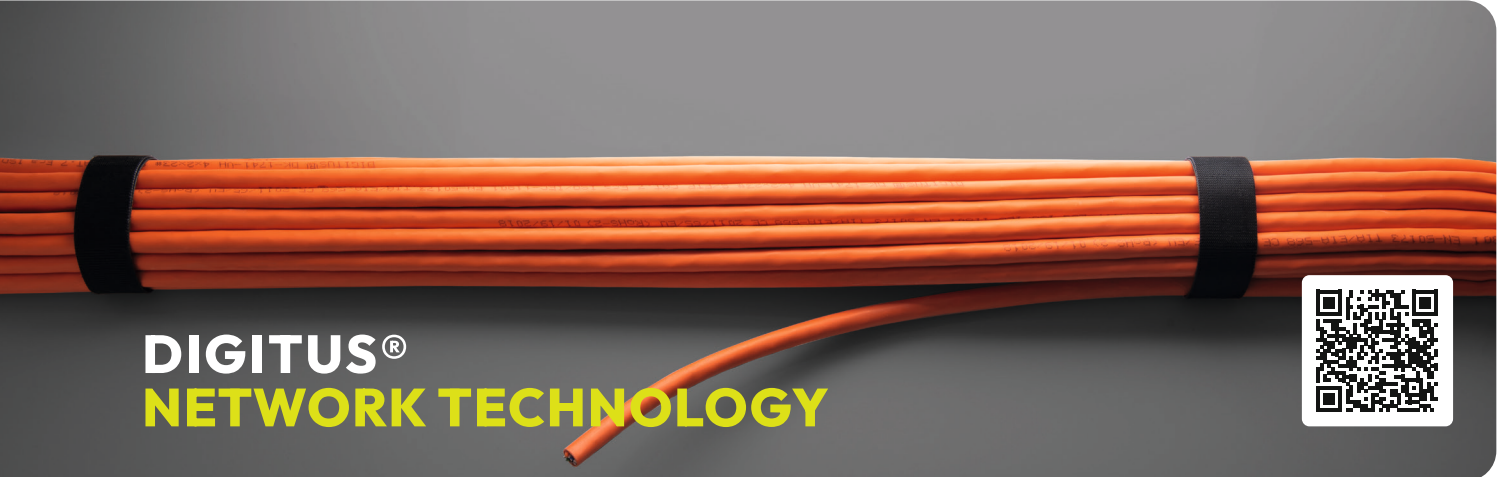
DN-95402 | EAN 4016032266402 | 1U Aluminum PDU, rackmountable, 7x safety outlet 16A, 4000W, 250VAC 50/60Hz, switch

DN-95440 | EAN 4016032501671 | 1U Alu PDU, rackmount, 9x Safety outlet, 1x outlet 16A, 230VAC, 50/60Hz, IEC C20 plug

DN-95441 | EAN 4016032501688 | 1U Alu PDU, rackmount, 7x Safety outlet, 1x outlet 16A, 230VAC, 50/60Hz

DN-95452 | EAN 4016032485971 | IT BASIC PDU, 3PH, 16A, 24 x C13, 3 x C19 Vertical, 3m cable, IEC309 3Ph-16A plug

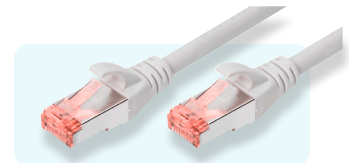
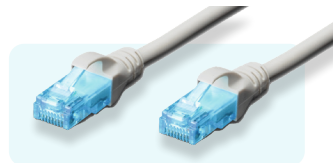
DN-95451 | EAN 4016032485964 | IT BASIC PDU, Vertical, 32A, 24 x C13, 4 x C19 IT BASIC PDU, Vertical, 32A, 24 x C13, 4 x C19



DIGITUS® NETWORK TECHNOLOGY



DIGITUS® CAT 6 S/FTP Patch Cord Shielded / Unshielded



Technical details

- CAT 5e / CAT 6 / CAT 6A / CAT 8.1
- U-UTP / U-FTP / F-UTP / SF-UTP / S-FTP
- Shielded / Unshielded
- Pure copper, CCA
- LSOH / PVC / PUR
- Round / narrow / flat patch cables
- RJ45, 25 m - 50 m
- Single pack & multipack
- Multiple colors

DK-1511-XXX | CAT 5e U-UTP, Cu, PVC AWG 26/7

DK-1512-XXX | CAT 5e U-UTP patch cord, PVC AWG 26/7

DK-1617-XXX | CAT 6 U-UTP, Cu, LSZH AWG26/7

DK-1617-A-XXXS | CAT 6A U-UTP slim patch cord, Cu, LSZH AWG 28/7

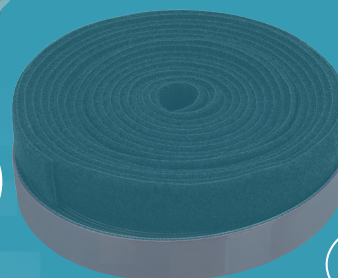
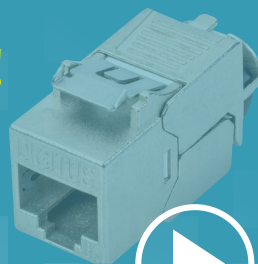
DK-1632-A-XXX | CAT 6A F-FTP Bendable patch cord, Cu, TPE-LSZH AWG 32/7

DK-1644-XXX | CAT 6 S-FTP patch cord, Cu, LSZH AWG 27/7

DK-1644-A-XXX | CAT 6A S-FTP patch cord, Cu, LSZH AWG 26/7

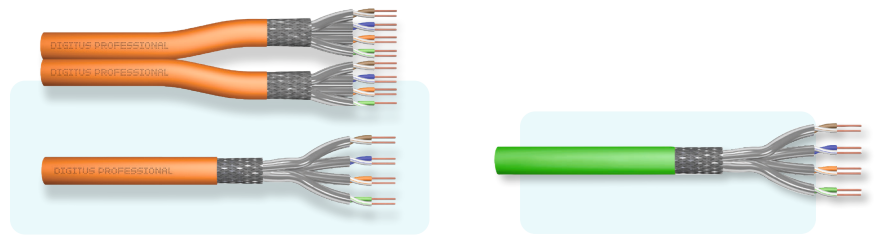
DK-1843-XXX | CAT 8.1 S-FTP patch cord, Cu, LSZH AWG 24/7

SEE HOW IT WORKS!
SIMPLY SCAN THE
QR CODE OR VISIT OUR
YOUTUBE CHANNEL!



Learn more

DIGITUS® Installation Cable Shielded / Unshielded



Technical details

- CAT 5e / CAT 6 / CAT 6A / CAT 7 / CAT 7 A / CAT 8.1
- U-UTP / U-FTP / F-UTP / S-FTP / SF-UTP
- Eca, Dca, Cca, B2ca
- Shielded / Unshielded
- LSOH / PVC / PE
- 25 m - 1000 m
- Indoor / Outdoor
- simplex / duplex

DK-1743-VH-XXX | CAT 7 S-FTP installation cable, 1200 MHz Dca (EN 50575), AWG 23/1

DK-1743-A-VH-XXX | CAT 7A S-FTP installation cable, 1500 MHz Dca (EN 50575), AWG 22/1

DK-1623-A-VH-XXX | CAT 6A U-FTP installation cable, 500 MHz Eca (EN 50575), AWG 23/1

DK-1614-VH-XXX | CAT 6 U-UTP installation cable, 250MHz Dca (EN 50575), AWG 23/1

DK-1531-V-XXX | CAT 5e SF-UTP installation cable, 100 MHz Eca (PVC), AWG 24/1

DK-1511-V-XXX | CAT 5e U-UTP installation cable, 100 MHz Eca (PVC), AWG 24/1

DK-1841-VH-XX | CAT 8.2 S-FTP installation cable, 2000 MHz Eca (EN 50575), AWG 22/1, 1000 m drum

DIGITUS® FTTH Housing, 2 x LC/APC DX Coupler with shutter



Technical details

- Ideal connection box for fiber optic cable in the FTTH sector
- Suitable for wall mounting
- Equipped with LC/APC coupling with shutter
- Designed for the connection of installation cables with pigtails or for the direct connection of pre-assembled cables
- Integrated splice cassette, hinged with cable guide

DN-931097 | EAN 4016032498599 | FTTH Outlet, with 2x LC (APC) DX adapter Surface mount

DN-948050-1 | EAN 4016032500803 | Fttx - Installation Kit, 4-Core, LC connector 50 m, APC, NE4

DIGITUS® FTTH Pre-Assembled Drop Cable blow-in, singlemode, 1 fiber, LC/APC, 10 m

Lengths: 10m; 30m; 50m



Technical details

- Pre-assembled with high-performance connectors - no splicing or on-site assembly required
- Bend-insensitive fiber ensures reliable performance even in tight installation areas with minimal signal loss
- Compact design enables air-assisted blow-in installation in microducts
- Ideal for FTTH network expansion and last-mile connections

DK-3901LCA-XX | FTTH Preterminated cable, Singlemode, 1 Core Blowable, LC-APC to LC-APC, 10 m

DIGITUS® CAT6A / Patch Panel

Patch Panel, Shielded



Technical details

- CAT 5e / CAT 6 / CAT 6A
- Shielded / Unshielded
- 0.5U / 1U / 2U
- 12 port / 24 port / 48 Port
- Empty plug-in fields / IDC connection technology
- Black / Gray

DN-91624S-EA | EAN 4016032288428 | CAT 6A Patch Panel, shielded, 1U, 24-port, 8P8C, RAL 7035, 483 mm (19"), grey RAL 7035

DN-91624S-SL-SH | EAN 4016032323297 | CAT 6 Patch Panel, shielded, 24-port RJ45 with shutter, 8P8C, LSA, 0.5U, 19" rack mount, bl

DN-91624S | EAN 4016032241614 | CAT 6 Patch Panel, shielded, 24-port RJ45, 8P8C, LSA, 1U, rack mount, grey, 482x44x109 mm

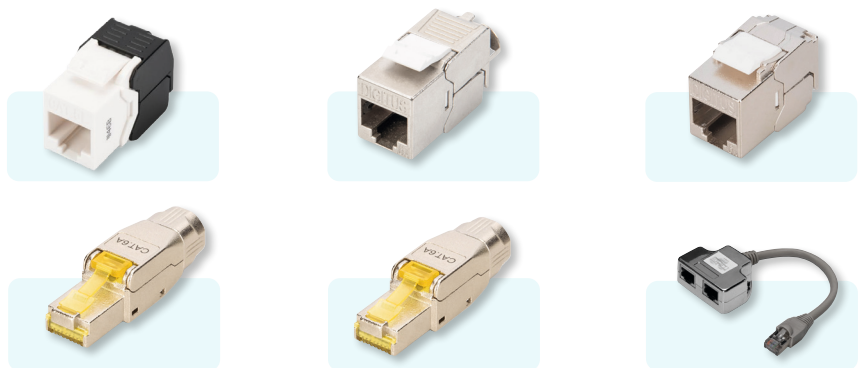
DN-91624U | EAN 4016032241553 | DIGITUS® CAT 6, Class E Patch Panel, unshielded 24-port RJ45, 8P8C, LSA, 1U, Rack Mount

DN-91410 | EAN 4016032280781 | Modular Patch Panel, shielded 24-port, blank, 1U, rack mount, grey RAL 7035

DN-91411 | EAN 4016032280798 | Modular Patch Panel, shielded 24-port, blank, 1U, rack mount, black RAL 9005

DIGITUS® CAT 6A Keystone Module

Shielded, Tool-Free Mounting Connection



Technical details

- CAT 5e / CAT 6 / CAT 6A / CAT 8.1
- Shielded / Unshielded
- Class D / Class E / Class EA
- Keystone jacks / Termination plugs
- RJ 45 - Tool-free connection
- Single pack / Pack of 24

DN-93502 | EAN 4016032276005 | CAT 5e Keystone Jack, unshielded RJ45 to LSA, tool free connection

DN-93615 | EAN 4016032293767 | CAT 6A Keystone Jack, shielded, tool free connection

DN-93615-24 | EAN 4016032373087 | CAT 6A Keystone Jack, shielded, Re-embedded tool free connec., set 24 pcs

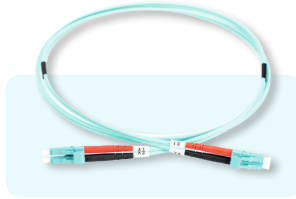
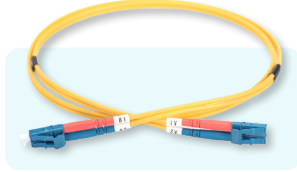
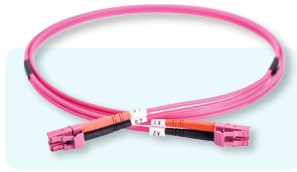
DN-93615-S | EAN 4016032497462 | CAT 6A compact body Keystone Module, shielded, tool free connection

DN-93638 | EAN 4016032499367 | CAT 6A tool-less connector, AWG 22-27, supports up to 4PPoE, IEEE802.3bt

DN-93838 | EAN 4016032499381 | Cat.8.1 Field Termination Plug, shielded, metal screw, and dust cap

DN-93904 | EAN 4016032267164 | CAT 5e patch cable adapter, 2x CAT 5e, shielded PC-PC, 2x RJ45 female to 1x RJ45 male, 0.19 m

DIGITUS® Fiber Optic Singlemode Singlemode & Multimode Patch Cable



Technical details

- OS2 / OM3 / OM4 / OM5
- Duplex-Typ
- LC-LC / SC-SC connectors
- LSOH
- 2 mm cable diameter

DK-2933-XX | FO patch cord, duplex, LC to LC SM OS2 09/125 µ

DK-2533-XX/3 | FO patch cord, duplex, LC to LC MM OM3 50/125 µ

DK-2533-XX-4 | FO patch cord, duplex, LC to LC MM OM4 50/125 µ

DK-2932-XX | FO patch cord, duplex, LC to SC SM OS2 09/125 µ

DK-2532-XX/3 | FO patch cord, duplex, LC to SC MM OM3 50/125 µ

DK-2532-XX-4 | FO patch cord, duplex, LC to SC MM OM4 50/125 µ

DK-2933-XX-APC-SX | FO patch cord, SM, simplex, LC/APC to LC/APC G657.A02

DK-2933A-XX-LCA-SX | FO patch cord, Armored, SM, simplex, LCA - LCA G657.A02

DIGITUS® FTTH Outdoor Distribution Box For Outdoor Use (Distribution Board) / DIN Rail Splice Box



Technical details

- For SC/SX or LC/DX couplers
- 2-24 coupler holders
- Protection class IP65
- Suitable for 4-48 fibers

DN-9689-XX | FTTH (distribution) box for outdoor use / DIN rail splice box

Products from
DIGITUS® by ASSMANN

DIGITUS® Fiber Optic Splice Box Equipped, LC, OS2



Technical details

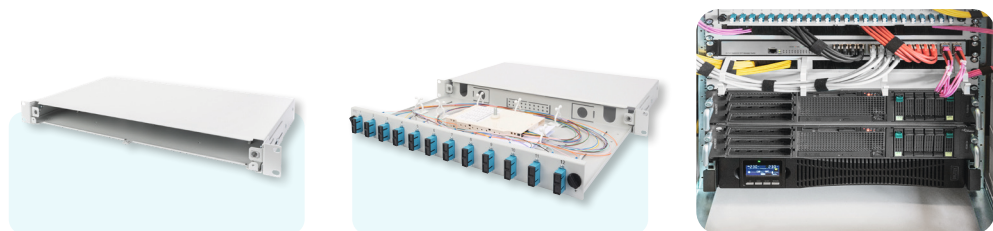
- Completely prefabricated, fiber pigtails exposed and inserted into the splice cassette(s)
- Colored pigtails
- Couplers with ceramic sleeve
- Couplers in polymer housing
- Carrier housing made of 1.0 mm steel sheet, varnished Assembly: Splice Box
- Color: light grey, RAL 7035
- Connector type: LC / UPC / duplex

DN-96330/9 | EAN 4016032278429 | FO splice box, 1U, equipped, 6x LC DX, OS2 incl. splice cassette, colored pigtails, couplers

DN-96330/9APC | EAN 4016032432258 | FO splice box, equipped, 6x LC DX, OS2, APC incl. splice cassette, Pigtails, connectors

DN-96330-4 | EAN 4016032325703 | FO splice box, 1U, equipped, 6x LC DX, OM4 incl. splice cassette, colored pigtails, couplers

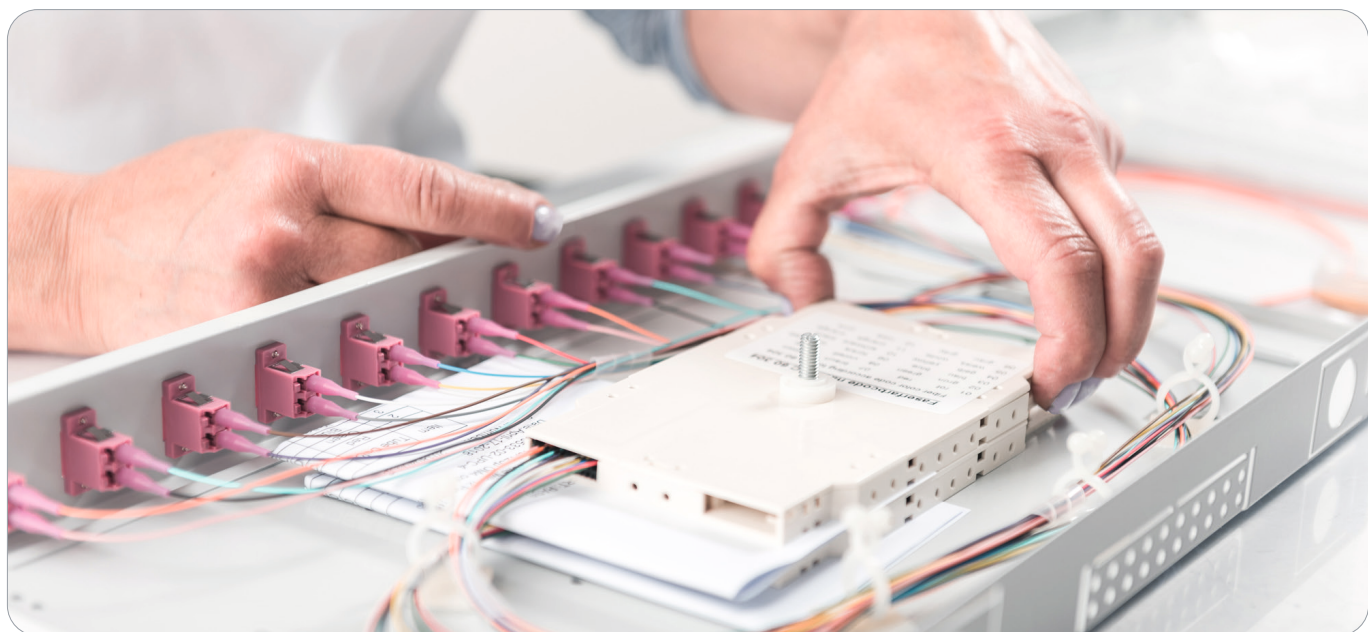
DIGITUS® Fiber Optic Splice Box Extendible, Quick Lock



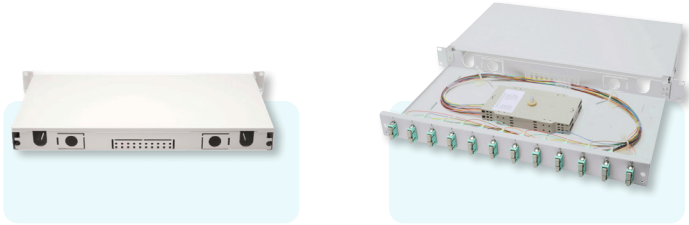
Technical details

- Quick lock system
- Carrier housing made of 1.0 mm steel sheet, varnished
- Holder for splice cassettes
- Extendible base chassis with pigtail fixing punch outs
- M20/M25 cable entries

DN-96200-QL | EAN 4016032458210 | FO splice box, 1U, quick lock, empty without front panel, M20/M25 Cable gland, grey



DIGITUS® Fiber Optic Splice Box
Equipped, SC, OM3



Technical details

- Completely prefabricated, fiber pigtailed exposed and inserted into the splice cassette(s), crimp splice holders
- Couplers with zirconia ceramic ferrule
- Couplers in polymer housing
- Carrier housing made of 1.0 mm steel sheet, varnished
- 1 height unit (44.45 mm)
- 483mm width (19")
- 240mm depth
- Colored pigtailed

DN-96321/3 | EAN 4016032278351 | FO splice box, 1U, equipped, 12x SC DX, OM3 incl. splice cassette, colored pigtailed, couplers

DIGITUS® FTTH fiber optic flush-mounted wall outlet
For Sc/Lc Adapter

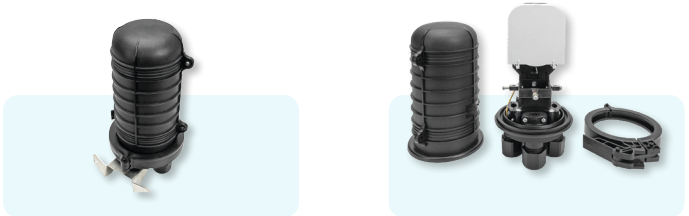


Technical details

- Provides a secure and protected connection point for fiber optic cables
- Supports SC and LC adapters for easy integration
- Maintains the optimum bending radius to ensure signal quality
- Compact flush-mounted design for discreet installation
- Ideally suited for modern FTTH installations

DN-93201 | EAN 4016032499121 | Fiber Flush Mount Wall-Outlet For SC and LC Adapter

DIGITUS® Fiber optic splice closure
48 Cores, Dome-Shaped



Technical details

- The closure casing is made of quality engineering plastics
- Anti-erosion against acid and alkali salt
- Anti-aging and reliable mechanical structure
- IP68 protection
- The closure is of small volume and big capacity
- It allows convenient maintenance and can be opened repeatedly

DN-941091 | EAN 4016032486794 | Mechanical fiber optic dome closure for max. 48 fibers

DIGITUS® Installation Cable Indoor/Outdoor

A/I-DQ (ZN) BH 9/125µ OS2, CPR Dca, LSZH



Technical details

- OS2 / OM3 / OM4
- 4-24 Fibers
- Cable jacket: LSOH
- Color cable: black

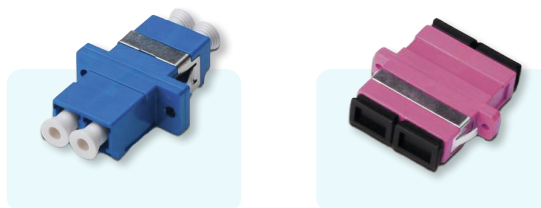
DK-39XXX-U | FO A-I-DQ(ZN)BH 4E9/125µ, SM, OS2, 4 fibers Indoor/Outdoor, LSZH, Dca, black

DK-35XXX/3-U | FO A-I-DQ(ZN)BH 8G50/125µ, MM, OM3, 8 fibers Indoor/Outdoor, LSZH, Dca, black

DK-35XXX/4-U | FO A-I-DQ(ZN)BH 8G50/125µ, MM, OM4, 8 fibers Indoor/Outdoor, LSZH, Dca, black

DIGITUS® Fiber Optic Coupling, Duplex

Ceramic Sleeve, Polymer Housing, Including Screws



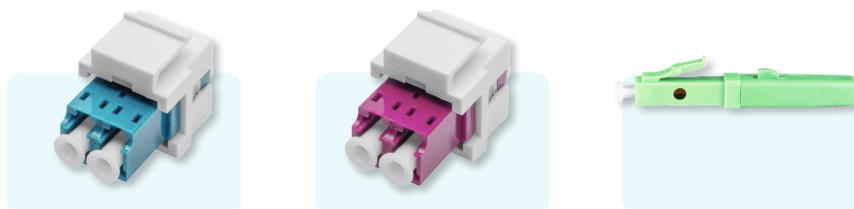
Technical details

- OS2 / OM2 / OM3 / OM4
- SC / LC variants
- Duplex-Type
- Ceramic sleeve

DN-960XX-2 | FO coupler, Duplex, LC to LC, SM, OS2, blue ceramic sleeve, polymer housing, incl. screws

DIGITUS® Fiber Optic Lc/Lc Duplex Coupler

Singlemode, Keystone Module



Technical details

- OS2 / OM2 / OM3 / OM4
- SC / LC variants
- Duplex-Type
- Ceramic sleeve

DN-96007-1-K | EAN 4016032489801 | Fiber LC-duplex coupler, SM, for keystone panel OS2, Color blue, incl. keystone frame

DN-96019-1-K | EAN 4016032489825 | Fiber LC-duplex coupler, MM-OM4, for keystone panel Color Violet, incl. keystone frame

DN-FC-9101-APC | EAN 4016032494638 | Fiber Optic Fast Connector, SM LC/APC 10 piece pack

DIGITUS® Colored Pigtails, LC OS2 09/125 µ, Simplex



Technical details

- OS2 / OM2 / OM3 / OM4
- SC / LC variants
- 12-piece set
- LSOH
- 2m

DK-29332-02 | EAN 4016032280170 | FO pigtail set, 12 pcs., LC, SM OS2 09/125 µ loose buffer, color code DIN IEC 304

DK-25221-02X | FO pigtail set, 12 pcs., SC, MM OM3 50/125 µ loose buffer, color code DIN IEC 304

DK-25332-02X | FO pigtail set, 12 pcs., LC, MM OM4 50/125 µ loose buffer, color code DIN IEC 304, 2m

DIGITUS® Pre-Assembled Fiber Optic Universal Breakout Cabl Singlemode OS2, 8 Fibers, LC/UPC - LC/UPC

Breakout cable 8 Fiber, SM G.657.A1 LC/UPC-LC/UPC, universal, Color black, 30m

Pre-assembled fiber optic breakout cables enable simple, time-saving and flexible installation of high-bandwidth network links.



Technical details

- Pre-assembled
- High-quality connectors fitted ex works
- Ready for immediate use, without additional splicing work
- Standard lengths available from stock
- High-quality components and construction
- Applications Applicable for indoor and outdoor use

DK-2A338UXXXBK-BBB | Breakout cable 8 Fiber, SM G.657.A1 LC/UPC-LC/UPC, universal, color black

DK-2A33CUXXXBK-BBB | Breakout cable 12 Fiber, SM G.657.A1 LC/UPC-LC/UPC, universal, color black

DK-24338UXXXBK-BBB | Breakout cable 8 Fibers, OM4, LC/UPC-LC/UPC universal, color black

DK-2433CUXXXBK-BBB | Breakout cable 12 Fibers, OM4, LC/UPC-LC/UPC universal, color black

DIGITUS® Fiber Optic Splice Cassette For 12 Fibers Incl. Splice Holder For Crimp And Shrink Splice Protection

FO Splice Cassette, Crimp and Shrinkable tubings Upto 12 cores, incl. cover and splice holder

Compact splice cassette for structured splice storage of up to 12 fibers. Supports both crimp and shrink splice protection with integrated holders. Reliably protects the spliced fibers in patch panels or housings.



Technical details

- One cassette for different splicing methods
- Splice holders guarantee clear and stable storage of the splices
- Provides optimum protection for sensitive fibers
- Optimized for efficient integration in patch panels and housings
- Universally applicable in standard patch panels and distribution enclosures

DN-96106 | EAN 4016032501329 | FO Splice Cassette, Crimp and Shrinkable tubings up to 12 cores, incl. cover and splice holder

DIGITUS® Fiber Optic Crimp Splice Protection

With Telecom Approval TS0338/96

Fiber Optic Crimp Splice Protection

Efficient splice protection for optical fibers with crimp technology. Compatible with standard splice cassettes, ideal for compact installations.



Technical details

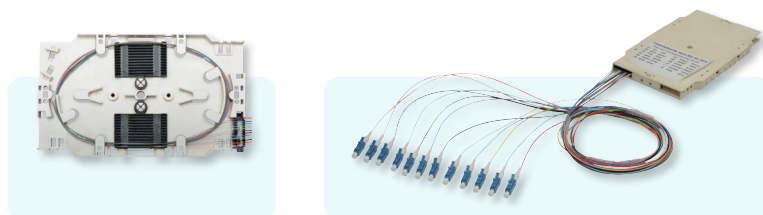
- Reliable mechanical protection
- Compact design for use in splice cassettes
- Ideal for quick and safe installation on site
- Excellent thermal properties
- Solution for a permanently stable and clear installation

DN-CSP-015 | EAN 4016032504955 | Fiber Optic Crimp Splice Protection 1 Tray with 15 pcs

DN-CSP-150 | EAN 4016032504948 | Fiber Optic Crimp Splice Protection 150 pcs package

DIGITUS® Splice Cassette With 12 Pigtails

Pre-Assembled, LC, OS2



Technical details

- Splice cassette with 12 pigtails; pre-assembled, crimp splice holders
- LC (UPC); Singlemode 9/125 μ
- Colored pigtails; LSOH
- Loose buffer

A-96933-02-UPC | EAN 4016032319160 | FO splice cassette with 12 colored pigtails LC (UPC), SM OS2 09/125 μ , LSZH

A-96933-02-APC | EAN 4016032319191 | FO splice cassette with 12 colored pigtails LC (APC), SM OS2 09/125 μ , LSZH

A-96533-02-UPC-4 | EAN 4016032319368 | FO splice cassette with 12 colored pigtails LC (UPC), MM OM4 50/125 μ , LSZH

DIGITUS® Fiber Optic 2 mm

Shrink Splice Protection, 45 mm



Technical details

- Keeps optical transmission properties of optical fiber
- Provides strength and protection to optical fiber splices
- Easy usage, avoid damages to the optical fiber
- Operating temperature: -45 °C up to +100 °C
- Packaging: 100 pcs

AL-SK6 | EAN 4016032349297 | Fiber Optic 2 mm Shrink Splice Protection 45 mm 1 mm stainless steel wire, 1 pc = 1 tray w 100 pcs.

DIGITUS® Mini GBIC (SFP) Module
1.25 Gbps, 80km

1.25 Gbps SFP Module, Singlemode LC Duplex Connector, 1550nm, up to 80km

The plug and play fiber connection



Technical details

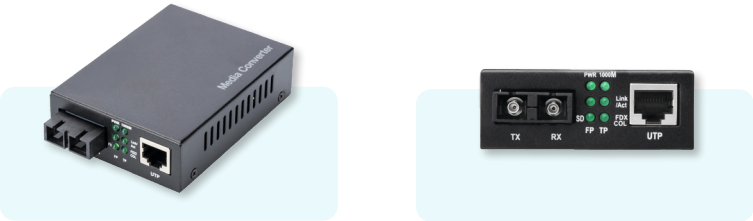
- The Plug & Play fiber optic link enables quick installation
- Sends data in high quality and additionally provides excellent reliability
- Distance up to 80km at a maximum data rate of 1.25Gbps
- Operating temperature: 0 °C ~ 70 °C

DN-81002 | EAN 4016032305675 | 1.25 Gbps SFP Module, Singlemode LC Duplex Connector, 1550nm, up to 80km

DIGITUS® Gigabit Media Converter
RJ45 / SC

Gigabit Ethernet Media Converter, Singlemode SC connector, 1310nm, up to 20km

The perfect converter solution for various fiber media



Technical details

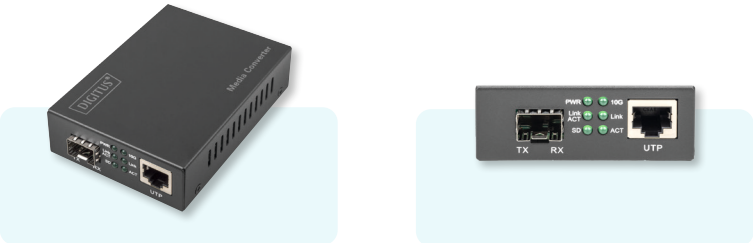
- Distance up to 20km
- Sends data in high quality and additionally provides excellent reliability
- A quick delivery is guaranteed in the gigabit range

DN-82121-1 | EAN 4016032293132 | Gigabit Ethernet Media Converter, Singlemode SC connector, 1310nm, up to 20km

DIGITUS® 10 Gigabit Media Converter

10 Gigabit Ethernet Media Converter, SFP supports 1G, 2.5G, 5G and 10G, open slot

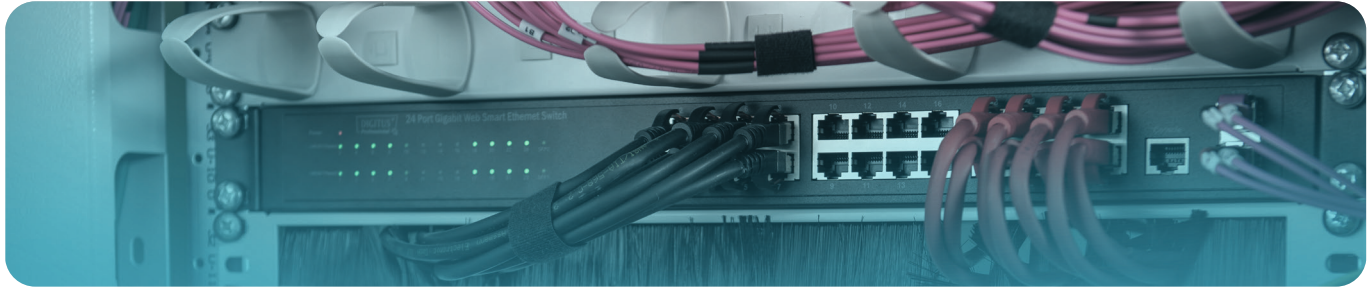
The perfect converter solution for optical data transmission



Technical details

- 10G Base-T to 10G Base-R Media Converters
- Supports 1000 Base-T to 1000 Base-X, 2.5G Base-T to 2.5G Base-X, 5G Base-T to 5G Base-R and 10G Base-T to 10G Base-R
- 1 x RJ45/1 x SFP

DN-82211 | EAN 4016032479482 | 10 Gigabit Ethernet Media Converter, SFP supports 1G, 2.5G, 5G and 10G, open slot



DIGITUS® KVM Switch, 4 Port Dual Display, 4K, HDMI

4 Port HDMI Dual View KVM Switch 4k@30Hz

Operate 4 PCs with dual display using a USB keyboard and mouse combination – switch between two computers by pressing a button



Technical details

- UHD resolution: 4K / 30 Hz (3840 x 2160p) / Subsampling: YUV 4:4:4
- Inputs: 8 x HDMI® inputs (4x2), 4 x USB B, 4 x Audio combo socket 3.5 mm jack (microphone, speaker)
- Outputs (console): 2 x HDMI®, 2 x USB A (mouse, keyboard), 2 x Stereo audio 3.5 m jack (microphone, speaker)
- Additional connection on the front side: 1 x USB A for additional peripheral equipment such as printers or USB sticks
- HDMI® version: 1.4b
- USB specifications: USB 2.0 compliant (full speed)
- Supported audio formats: Dolby True HD, DTS HD Master Audio
- Switching between the PCs: Switch on the front side or hot keys
- Status LED on front side shows current configuration
- The device is platform-independent, suitable for all operating systems
- Operating temperature: 0 °C to 50 °C
- Storage temperature: -20 °C to +60 °C
- Operating humidity: 0% - 80% RH (non-condensing)
- Case material: Metal
- Power supply device: USB power supply or optional 9 V DC power adapter (300 mA, 5.5x2.1 mm plug)
- Dimensions: 20.2 x 11.0 x 6.6 cm (WxDxH)
- Weight: 920 g
- Power Spec: AC 100-240V
- Power Consumption: 2.7
- DC plug Size: 5.5*2.1mm

DS-12883 | EAN 4016032478157 | 4 Port HDMI Dual View KVM Switch 4k@30Hz

DIGITUS® LCD KVM Console CAT 5 KVM & Touchpad

Modularized 48,3cm (19") TFT console with 8 port CAT 5 KVM, GE keyboard, RAL 9005 black

Highest degree of flexibility during the administration of the server farm



Technical details

- Modular console with 19" TFT (48,3cm), 8-port Cat.5 KVM & Touchpad, german keyboard
- Flexible configuration depending on area of application
- Space-saving casing with 1U design height

DS-72211-2US | EAN 4016032449867 | Modularized 48,3cm (19") TFT console with 8 port KVM, US keyboard, RAL 9005 black

DS-72211-3GE | EAN 4016032449362 | Modularized 48,3cm (19") TFT console with 16 port KVM, German keyboard, RAL 9005 black

DS-72210-3GE | EAN 4016032449317 | Modularized 43,2cm (17") TFT console with 16 port KVM, German keyboard, RAL 9005 black

DS-72211-4GE | EAN 4016032449379 | Modularized 48,3cm (19") TFT console with 8 port CAT 5 KVM, GE keyboard, RAL 9005 black

DS-72211-5GE | EAN 4016032451433 | Modularized 48,3cm (19") TFT console with 16 port CAT 5 KVM, GE keyboard, RAL 9005 black

DIGITUS® Industrial 8+2 port L2 Managed Gigabit Ethernet Poe Switch

Ind. 8+2-Port Gigabit L2 managed Ethernet PoE
Swit 8 x GE RJ45 + 2 SFP Port, IEEE802.3af (30W)

8 x 10/100/1000 BASE-TX RJ45 + 2x 1000Base-Fx ports, L2 manageable, IP40 housing with redundant power supply, ideal for monitoring, control management and wireless services at -40°C to 80°C. Ports 1-8 (RJ45) support PoE according to IEEE802.3af/at standards



Technical details

- 8 port GE RJ45, 2 SFP GE ports
- 8 x 10/100/1000 Mbit (RJ45, PoE IEEE802.3af/at)
- 2 x 10/100/1000 Mbit (SFP)
- Redundant power supply 48 -57V (DC)
- Metal housing according to IP40 standard
- Easy mounting on a DIN rail
- Operating temperature from - 40° up to 80° C
- Numerous L2 management features
- ESD & EFT protection up to 8 kV (DC)
- Ideal for connecting camera systems

DN-651157 | EAN 4016032489252 | Industrial 4+2-Port Gigabit Ethernet PoE Switch

DIGITUS® 10/100/1000Base-TX (PoE) to 1000Base FX Industrial Media Converter

Industrial Gigabit Ethernet PoE+ Media Converter
SFP Open Slot, without SFP Module, PSE, 802.3at

Industrial Gigabit Ethernet PoE+ Media Converter SFP
Open Slot, without SFP Module, PSE, 802.3at



Technical details

- The use of high quality photoelectric integration module to provide good optical and electrical characteristics
- Ensure reliable data transmission and long working life
- Support full duplex or half duplex mode, with automatic negotiation capability
- Network port support automatic cross identification
- Internal storage and forwarding mechanism, support a variety of protocols

DN-652104-1 | EAN 4016032488217 | Industrial Gigabit Ethernet PoE+ Media Converter SFP Open Slot, without SFP Module, PSE, 802.3at

DISCOVER
OUR RANGE OF SWITCHES



Learn more

DIGITUS® 8-Port Fast Ethernet Network PoE Switch, Industrial, Unmanaged

Industrial 8-Port Fast Ethernet PoE Switch DIN rail, extended temp. range

Robust and durable industrial solutions with integrated Power over Ethernet (PoE) function



Technical details

- 8 x 10/100Base-TX Ethernet PoE ports
- Supports IEEE802.3af/at
- Automatic cable detection - Auto MDI / MDI-X function
- Supported standards: IEEE 802.3 10BaseT, IEEE 802.3u 100BaseTX, IEEE802.3af, IEEE802.3at
- IEEE802.3x Flow Control and Back Pressure
- Store-and-forward technology for optimized data transfer
- Automatic speed and half/full duplex detection/adjustment
- Backplane with 1.6Gbps

DN-650108 | EAN 4016032458869 | Industrial 8-Port Fast Ethernet PoE Switch DIN rail, extended temp. range

DIGITUS® 4-Port Gigabit Network Switch Industrial, Unmanaged, 1 RJ45 Uplink

Industrial 5-Port Gigabit Switch DIN rail, extended temp. range

Robust and durable industrial solutions with standard and top-hat rail mounting



Technical details

- 5 x 10/100/1000Base-TX Ethernet ports
- Automatic cable detection - Auto MDI / MDI-X function
- Supported standards: IEEE 802.3 10BaseT, IEEE 802.3u 100BaseTX, IEEE802.3ab 1000BaseTX
- IEEE802.3x Flow Control and Back Pressure
- Store-and-forward technology for optimized data transfer
- Automatic speed and half/full duplex detection/adjustment
- Backplane with 14Gbps
- MAC address memory 2K
- Compact, robust metal housing
- Excellent protection against short circuits
- Lightning protection and surge protection

DN-651118 | EAN 4016032458838 | Industrial 5-Port Gigabit Switch DIN rail, extended temp. range

DIGITUS® 8-Port Gigabit Ethernet Netzwerk Switch, Industrial, Unmanaged

Industrial 8-Port Gigabit Switch DIN rail, extended temp. range

Robust and durable industrial solutions with standard and DIN Rail mounting



Technical details

- 8 x 10/100/1000Base-TX Ethernet ports
- Automatic cable detection - Auto MDI / MDI-X function
- Supported standards: IEEE 802.3 10BaseT, IEEE 802.3u 100BaseTX, IEEE802.3ab 1000BaseTX
- Store-and-forward technology for optimized data transfer
- Automatic speed and half/full duplex detection/adjustment
- Backplane with 16 Gbps
- MAC address memory 4K
- Compact, robust metal housing
- Excellent protection against short circuits
- Lightning protection and surge protection
- Suitable for mounting on DIN rail (top-hat rail)

DN-651119 | EAN 4016032458845 | Industrial 8-Port Gigabit Switch DIN rail, extended temp. range

DIGITUS® 4-Port Gigabit Network PoE Switch, Industrial, Unmanaged, 1 RJ45 Uplink

Industrial 4-Port Gigabit PoE Switch + 1 uplink DIN rail, extended temp. range

Robust and durable industrial solutions with integrated Power over Ethernet (PoE) function



Technical details

- 4 x 10/100/1000Base-TX Ethernet PoE Ports
- 1 x 10/100/1000Base-TX Ethernet uplink port
- Supports IEEE802.3af/at
- Automatic cable detection - Auto MDI / MDI-X function
- Supported standards: IEEE 802.3 10BaseT, IEEE 802.3u 100BaseTX, IEEE802.3ab 1000BaseTX, IEEE802.3af, IEEE802.3at
- IEEE802.3x Flow Control und Back Pressure
- Store and forward technology for optimized data transfer
- Automatic speed and half/full duplex recognition/adjustment
- Backplane with 14 Gbps

DN-651120 | EAN 4016032458876 | Industrial 4-Port Gigabit PoE Switch + 1 uplink DIN rail, extended temp. range

DIGITUS® 5-Port Gigabit Ethernet Network Switch Switch, Flat, Industrial, Unmanaged

Industrial 5-Port Gigabit Flat Switch 5-port, DIN rail, extended temp. range

Robust industry solution, high temperature range, space-saving flat case for profile rail mounting



Technical details

- 5 x 10/100/1000 Base-TX Ethernet ports
- Automatic cable recognition - auto MDI/ MDI-X function
- Supports standards: IEEE802.3, IEEE802.3u, IEEE802.3ab, IEEE802.3x
- LED display: Power (on/off), link (on/off/ data)
- Store and forward technology for optimized data transfer
- Automatic speed and half/full duplex detection/adjustment
- Backplane capacity: 14 Gbps
- MAC address memory: 2K (auto-learning, auto-aging)

DN-651126 | EAN 4016032462835 | Industrial 5-Port Gigabit Flat Switch 5-port, DIN rail, extended temp. range

DIGITUS® 4-Port Gigabit Ethernet Network PoE Switch, Industrial, Unmanaged, 1 SFP Uplink

Industrial 4+1-Port Gigabit Ethernet PoE Switch Unmanaged, 4 RJ45 Ports 10/100/1000 Mbits

The DN-651135 is a 4+1 port PoE Gigabit Ethernet switch (IEEE 802.3 af/at) suitable for industrial applications (IP40) that offers interference-free data transfer performance in harsh industrial environments.



Technical details

- 4 ports 10/100/1000 Base-Tx RJ45 with autonegotiation and Auto-MDI/ MDI-X function, PoE IEEE 802.3af/at (up to 30W)
- 1-port 1000Base-Fx interface SFP
- 48V to 57V DC, redundant power connection possible
- Operating temperature: - 40° to 80°C
- IP40 aluminum housing
- Supports 6KV DC Ethernet ESD protection
- Supports 6KV DC EFT protection for the power line
- Vibration, shock and drop protection
- Performance specification: Bandwidth: 14Gbps, Packet buffer memory: 1.2Mbit, Packet forwarding rate: 10.5Mpps, MAC address table: 2K

DN-651135 | EAN 4016032486053 | Industrial 4+1-Port Gigabit Ethernet PoE Switch Unmanaged, 4 RJ45 Ports 10/100/1000 Mbits



DIGITUS® 8+4-Port Gigabit Ethernet PoE Switch L2 managed Gigabit Ethernet PoE Switch

Industrial 8+4-Port Gigabit Ethernet PoE Switch 8 x GE RJ45 + 2 SFP+ Port, PoE

8x PoE 10/100/1000 BASE-TX RJ45 + 4 x 1000Base-Fx ports. The IP40 enclosure with redundant power supply is ideal for monitoring, control management and wireless services at -40°C to 80°C.



Technical details

- 8 port GE, 2 SFP GE ports
- 8 x 10/100/1000 Mbit (RJ45, PoE 802.3af/at)
- 4 x 10/100/1000 Mbit (SFP)
- Redundant power supply 48-57 V (DC)
- Metal housing to IP40 standard
- Simple mounting on a top-hat rail
- Operating temperature from - 40° up to 80° C
- Simple plug & play installation
- ESD & EFT protection up to 6 kV (DC)
- Ideal for connecting camera systems

DN-651153 | EAN 4016032490494 | Industrial 8+4-Port Gigabit Ethernet PoE Switch 8 x GE RJ45 + 2 SFP+ Port, PoE

DIGITUS® Industrial 8+2-Port L2 managed Gigabit Ethernet PoE Switch

Ind. 8+2 Port L2 Managed Gigabit Ethernet Switch 8x GE RJ45 + 2 SFP Port

8x 10/100BASE-TX RJ45 + 2x 1000Base-Fx ports, L2 Management functions. The IP40 housing with redundant power supply is ideal for monitoring, control management and wireless services at -40°C to 80°C.



Technical details

- 8 port GE RJ45, 2 SFP GE ports
- 8 x 10/100/1000 Mbit (RJ45)
- 2 x 10/100/1000 Mbit (SFP)
- Redundant power supply 12-48 V (DC)
- Metal housing according to IP40 standard
- Easy mounting on a top hat rail
- Operating temperature from - 40° up to 80° C
- Numerous L2 management features
- ESD & EFT protection up to 6 kV (DC)
- Optimal for the connection of camera systems

DN-651156 | EAN 4016032490180 | Ind. 8+2 Port L2 Managed Gigabit Ethernet Switch 8x GE RJ45 + 2 SFP Port

DIGITUS® Industrial 8+2-Port L2 managed Gigabit Ethernet PoE Switch

Ind. 8+2-Port Gigabit L2 managed Ethernet PoE Switch 8 x GE RJ45 + 2 SFP Port, IEEE802.3af (30W)

8 x 10/100/1000 BASE-TX RJ45 + 2x 1000Base-Fx ports, L2 manageable, IP40 housing with redundant power supply, ideal for monitoring, control management and wireless services at -40°C to 80°C. Ports 1-8 (RJ45) support PoE according to IEEE802.3af/at standards



Technical details

- 8 port GE RJ45, 2 SFP GE ports
- 8 x 10/100/1000 Mbit (RJ45, PoE IEEE802.3af/at)
- 2 x 10/100/1000 Mbit (SFP)
- Redundant power supply 48 -57V (DC)
- Metal housing according to IP40 standard
- Easy mounting on a DIN rail
- Operating temperature from - 40° up to 80° C
- Numerous L2 management features
- ESD & EFT protection up to 8 kV (DC)
- Ideal for connecting camera systems

DN-651157 | EAN 4016032490210 | Ind. 8+2-Port Gigabit L2 managed Ethernet PoE Switch 8 x GE RJ45 + 2 SFP Port, IEEE802.3af (30W)

DIGITUS® Industrial 16+2-Port L2 managed Gigabit Ethernet PoE Switch

Ind. 16+2-Port L2 managed Gigabit Ethernet Switch 16 x GE RJ45 + 2 SFP Port

16x 10/100BASE-TX RJ45 + 2x 1000Base-Fx ports, L2 Management functions. The IP40 housing with redundant power supply is ideal for monitoring, control management and wireless services at -40°C to 80°C.



Technical details

- 16 port GE RJ45, 2 SFP GE ports
- 16 x 10/100/1000 Mbit (RJ45)
- 2 x 10/100/1000 Mbit (SFP)
- Redundant power supply 12-48 V (DC)
- Metal housing according to IP40 standard
- Easy mounting on a top hat rail
- Operating temperature from - 40° up to 80° C
- Numerous L2 management features
- ESD & EFT protection up to 6 kV (DC)
- Optimal for the connection of camera systems

DN-651158 | EAN 4016032490227 | Ind. 16+2-Port L2 managed Gigabit Ethernet Switch 16 x GE RJ45 + 2 SFP Port

DIGITUS® Industrial 16+2-Port L2 managed Gigabit Ethernet PoE Switch

Ind.16+2-Port Gigabit L2 managed Ethernet PoE Switch 16 x GE RJ45 + 2 SFP Port, IEEE802.3af (30W)

16 x 10/100/1000 BASE-TX RJ45 + 2x 1000Base-Fx ports, L2 manageable, IP40 housing with redundant power supply, ideal for monitoring, control management and wireless services at -40°C to 80°C. Ports 1-8 (RJ45) support PoE according to IEEE802.3af/at standard



Technical details

- 16 port GE RJ45, 2 SFP GE ports
- 16 x 10/100/1000 Mbit (RJ45, PoE IEEE802.3af/at)
- 2 x 10/100/1000 Mbit (SFP)
- Redundant power supply 48 -57V (DC)
- Metal housing according to IP40 standard
- Easy mounting on a DIN rail
- Operating temperature from - 40° up to 80° C
- Numerous L2 management features
- ESD & EFT protection up to 8 kV (DC)
- Ideal for connecting camera systems

DN-651159 | EAN 4016032490234 | Ind.16+2-Port Gigabit L2 managed Ethernet PoE Switch 16 x GE RJ45 + 2 SFP Port, IEEE802.3af (30W)

DIGITUS® 4-Port Fast Ethernet network switch, Industrial, unmanaged, 1 RJ45 uplink Industrial, Unmanaged, 1 RJ45 Uplink

Industrial 5-Port Fast Ethernet Switch DIN rail, extended temp. range

Robust and durable industrial solutions with standard and top-hat rail mounting



Technical details

- 5 x 10/100Base-TX Ethernet ports
- Automatic cable detection - Auto MDI / MDI-X function
- Supported standards: IEEE 802.3 10BaseT, IEEE 802.3u 100BaseTX
- IEEE802.3x Flow Control and Back Pressure
- Store-and-forward technology for optimized data transfer
- Automatic speed and half/full duplex detection/adjustment
- Backplane with 1.6 Gbps
- MAC address memory 2K
- Compact, robust metal housing

DN-650105 | EAN 4016032458814 | Industrial 5-Port Fast Ethernet Switch DIN rail, extended temp. range

DN-650106 | EAN 4016032458821 | Industrial 8-Port Fast Ethernet Switch DIN rail, extended temp. range

DIGITUS® 4-Port Fast Ethernet Network PoE Switch, Industrial, Unmanaged, 1 RJ45 Uplink

Industrial 4-port Fast Ethernet PoE Switch 1 uplink port, DIN rail, extend. temp. range

Robust and durable industrial solutions with integrated Power over Ethernet (PoE) function



Technical details

- 4 x 10/100Base-TX Ethernet PoE ports
- 1 x 10/100Base-TX Ethernet uplink port
- Supports IEEE802.3af/at
- Automatic cable detection - Auto MDI / MDI-X function
- Supported standards: IEEE 802.3 10BaseT, IEEE 802.3u 100BaseTX, IEEE802.3af, IEEE802.3at
- IEEE802.3x Flow Control and Back Pressure
- Store-and-forward technology for optimized data transfer
- Automatic speed and half/full duplex detection/adjustment
- Backplane with 1.6Gbps

DN-650107 | EAN 4016032458852 | Industrial 4-port Fast Ethernet PoE Switch 1 uplink port, DIN rail, extend. temp. range

DIGITUS® 10/100/1000Base-TX (PoE) 1000Base-FX Industrial Media Converter

Industrial Gigabit Ethernet Media Converter, SFP SFP Open Slot, without SFP Module

DIGITUS® DN-652103-1 10/100/1000 Base-TX to 1000 Base-FX Industrial Media Converter, extends communication distance with stable performance via fiber optic wire.



Technical details

- The use of a high-quality photoelectric integration module with good optical and electrical properties
- Guarantees reliable data transmission and a long service life
- Supports full-duplex or half-duplex mode, with automatic negotiation option
- Support for network connections with automatic cross detection
- Internal storage and forwarding mechanism, supports a wide range of protocols
- In accordance with industrial operating standards, the average trouble-free operation is more than 300,000 hours

DN-652103-1 | EAN 4016032488200 | Industrial Gigabit Ethernet Media Converter, SFP SFP Open Slot, without SFP Module

DN-652104-1 | EAN 4016032488217 | Industrial Gigabit Ethernet PoE+ Media Converter SFP Open Slot, without SFP Module, PSE, 802.3at

DIGITUS® Industrial Gigabit Ethernet PoE switch

Industrial 4+2-Port Gigabit Ethernet PoE Switch 4 Port GE PoE RJ45, 2 GE SFP Port

4 x PoE 10/100/1000 BASE-TX RJ45 + 2x 1000Base-Fx ports. The IP40 enclosure with redundant power supply is ideal for monitoring, control management and wireless services at -40°C to 80°C.



Technical details

- Supports IEEE802.3x flow control, and backpressure
- Supports store-and-forward technology for optimized data transmission
- Automatic speed and half/full duplex detection/adjustment
- 4 port PoE with up to 30 W
- Bandwidth: 14 Gbps
- Packet buffer: 1.2 Mbit
- Packet forwarding size: 10.5 Mbps
- Size of the MAC address table: 2K
- Jumbo frame rate: 9000 byte
- ESD protection: 6 kV (DC)
- EFT protection: 6 kV (DC)
- Metal housing, IP40
- 4 kV lightning protection and surge protection

DN-651149 | EAN 4016032489252 | Industrial 4+2-Port Gigabit Ethernet PoE Switch 4 Port GE PoE RJ45, 2 GE SFP Port

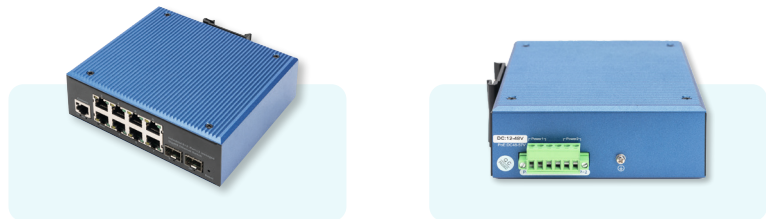
DN-651150 | EAN 4016032489269 | Industrial 8+2-Port Gigabit Ethernet Switch 8-Port GE RJ 54, 2 GE SFP Port

DN-651153 | EAN 4016032490494 | Industrial 8+4-Port Gigabit Ethernet PoE Switch 8 x GE RJ45 + 2 SFP+ Port, PoE

DIGITUS® Industrial 8+2-Port L2 managed Gigabit Ethernet Switch

Ind. 8+2 Port L2 Managed Gigabit Ethernet Switch 8x GE RJ45 + 2 SFP Port

8x 10/100BASE-TX RJ45 + 2x 1000Base-Fx ports, L2 Management functions. The IP40 housing with redundant power supply is ideal for monitoring, control management and wireless services at -40°C to 80°C.



Technical details

- Supports IEEE802.3x flow control, and backpressure
- Supports store-and-forward technology for optimized data transmission
- Automatic speed and half/full duplex detection/adjustment
- Bandwidth: 20 Gbps
- Packet buffer size: 4.1 Mbit
- Packet forwarding size: 15 Mbps
- Size of the MAC address table: 4 K
- jumbo frame rate :10240 bytes
- ESD protection: 6 kV
- EFT protection: 6 kV
- Metal housing, IP40
- 4 kV lightning and overvoltage protection
- Suitable for DIN rail mounting (top hat rail)
- Redundant power supply with reverse polarity protection function
- Power supply: 12 to 48 V (DC)
- Power consumption: <10 W

DN-651156 | EAN 4016032490180 | Ind. 8+2 Port L2 Managed Gigabit Ethernet Switch 8x GE RJ45 + 2 SFP Port



DIGITUS® 16-Port Gigabit Switch 19 inch, Unmanaged

**DIGITUS® 16-Port Gigabit Switch 16-port
10/100/1000Base-T**

The DN-80112-2 16 port unmanaged switch is the ideal choice for businesses looking for a reliable, high-performance network solution with advanced features and robust security.



Technical details

- Gigabit speed: 16 x 10/100/1000Mbps RJ45 ports deliver ultra-fast network speeds and ensure a smooth and uninterrupted data flow
- IEEE compatibility: Complies with several IEEE standards (IEEE802.3, IEEE802.3i, IEEE802.3u, IEEE802.3ab, IEEE802.3x,

IEEE802.3z, IEEE802.3az) and thus guarantees compatibility with a wide range of network devices

- Auto MDI/MDIX: Simplifies network setup with automatic port flipping and eliminates the need for crossover cables
- Full-duplex and half-duplex flow control:

- Supports IEEE802.3x full-duplex flow control and backpressure half-duplex flow control to improve network efficiency
- Advanced security: Features a perfect security mechanism to protect your network from potential threats

DN-80112-2 | EAN 4016032498490 | DIGITUS® 16-Port Gigabit Switch 16-port 10/100/1000Base-T

DIGITUS® 24-Port 10/100/1000 + 4SFP + UPLINK Switch, 19", L2+ Features

**24 Port GE 4 SFP+ UPLINK L2+ Switch 24 Port
10/100/1000+4SFP+ UPLINK Switch**

24 Port 10/100/1000 + 4 10 G SFP+ UPLINK
Switch, 19", L2+ Features



Technical details

- Support RJ45 Auto-MDI/MDIX
- Panel light monitors working status and assists in fault analysis
- Supports full-duplex IEEE 802.3x flow control and Backpressure half-duplex flow control
- Support Energy-Efficient Ethernet (EEE) function (IEEE802.3az)

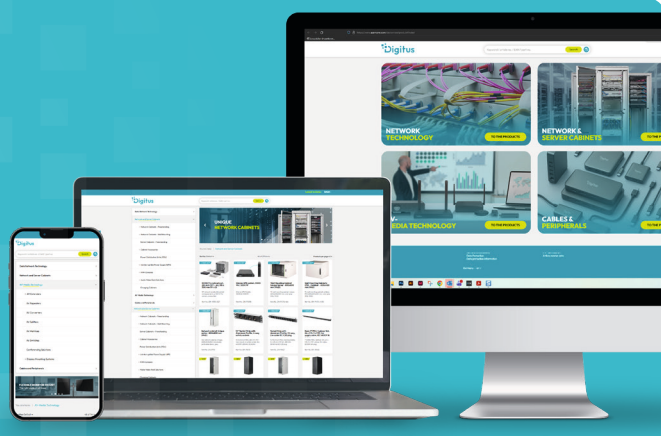
- High reliability design, supporting traditional STP/RST layer 2+ link protection technology; Supports manual aggregation and dynamic aggregation, which increases link bandwidth, improves link reliability, and implements load balancing and link backup

- Management and maintenance Supports Console, Telnet, and SSH management modes
- The system supports WEB management, which facilitates installation and debugging for engineers and maintenance personnel

DN-80223 | EAN 4016032485452 | 24 Port GE 4 SFP+ UPLINK L2+ Switch 24 Port 10/100/1000+4SFP+ UPLINK Switch

ARE YOU LOOKING FOR SOMETHING SPECIFIC?

Learn more



DIGITUS® 24-Port Gigabit PoE Networkswitch 19 Inch, managed, 2 Uplink Ports

24 Port L2 Managed Gigabit Ethernet Switch with PoE Injector, 2 SFP Uplink

The DN-95359 is a case-shaped device with a chassis of 1U high. It provides 24 10/100/1000Base-TX ports + 2 gigabit SFP ports. It provides 24 Port PoE Injector.



Technical details

- Provides 24 10/100/1000 Base-TX ports + 2 gigabit SFP ports, Provides 24 PoE injector
- Build-in power supplies, 330W, High back-plane bandwidth 52Gbps
- Support ICMPv6, IPv6 Neighbor Discovery, MLD Snooping, IPv6 Telnet, standard IP/ Extend IP / MAC IP / ARP
- ACL, IGMP snooping for Multi-media application
- Support Port mirror and bandwidth control, IEEE802.3x Flow control
- Support Port Based VLAN / 802.1Q Tag VLAN, IEEE802.3ad Port trunk with LACP
- Support Spanning tree protocol IEEE802.1d/802.1w/802.1s
- Support IEEE 802.1p class of service, IEEE 802.1x user authentication
- Support Broadcast storm filter, System event log, command line interface management
- Management by Web / SNMP / SSH / Telnet (IPv6 ready) / Console

DN-95359 | EAN 4016032486503 | 24 Port L2 Managed Gigabit Ethernet Switch mit PoE Injektor, 2 SFP Uplink

DIGITUS® 24-Port Gigabit Switch 19 Inch, Managed, 2 Uplinks

L2 managed Gigabit Ethernet Switch 24-port + 2 combo and 2 SFP uplink port

Highest bandwidth and performance for professional demands. Superior manageability via WebUI!



Technical details

- 24 x 10/100/1000BaseTX ports
- 2 x Uplink RJ45/SFP combo ports
- 2 x SFP uplink ports
- 1 x RJ45 console port integrated
- Layer-2 features configurable via WebUI
- Extensive Layer 2 features for optimal configuration

DN-80221-3 | EAN 4016032467687 | L2 managed Gigabit Ethernet Switch 24-port + 2 combo and 2 SFP uplink port

DIGITUS® 8-Port Gigabit PoE Networkswitch unmanaged, 2 Uplink Ports

8 Port Gigabit Switch 8xRJ45 (6xPoE)+ 2G SFP 180W Support 802.3 af/at/bt standard

8 Port Gigabit PoE++Switch with 2 x SFP Uplink Ports - supports up to 2 ports with full IEEE 802.03bt performance + total of 4 IEEE 802.3 at/af ports.



Technical details

- Supports the PoE standards IEEE 802.3af, IEEE 802.3at & IEEE 802.3bt
- Total PoE budget of 180 W - supports PoE++
- 6 x RJ45 PoE Ports (2 x 90 W, 4 x 30 W)
- 2 x RJ45 Ports - usable as uplink or for LAN devices
- 2 x SFP Ports - for SFP modules (fiber glass/copper)
- Automatic detection of PoE devices - can also be used for non-PoE devices
- LED status displays on front panel
- Supports legacy BT, BT and UPoE modes

DN-95140 | EAN 4016032467380 | 8-Port Gigabit Switch 8xRJ45 (6xPoE)+ 2G SFP 180W Support 802.3 af/at/bt standard

DIGITUS® 16-Port Unmanaged Switch 10" Gigabit

Gigabit Ethernet Switch 16-port, 10 inch, unmanaged

Expands networks quickly and cost-effectively by 16 Gigabit ports, ideal for compact 10" distribution solutions.



Technical details

- Network & Performance
- 16 × 10/100/1000 Mbps RJ45
- Network standards: IEEE 802.3, IEEE 802.3u, IEEE 802.3ab, IEEE 802.3x
- Non-blocking, non-head-of-line forwarding
- Back-pressure and bandwidth control on each port
- Store-and-forward technology
- Automatic speed and duplex detection (half/full)
- 20 / 200 / 2000 Mbit/s in full duplex mode
- Auto MDI/MDI-X function
- Backplane: 32 Gbps
- MAC addresses: up to 8K
- Design & assembly
- Completely fanless
- Metal housing

DN-80115 | EAN 4016032460237 | Gigabit Ethernet Switch 16-port, 10 inch, unmanaged

DIGITUS® 8-Port Unmanaged Switch 10" Gigabit

Gigabit Ethernet Switch 8-port, 10 inch, unmanaged

Simplifies the setup of small Gigabit networks in 10" wall-mounted housings - quietly, efficiently and without configuration effort.



Technical details

- Network & Performance
- 8 × 10/100/1000 Mbps RJ45
- Network standards: IEEE 802.3, IEEE 802.3u, IEEE 802.3ab, IEEE 802.3x
- Non-blocking, non-head-of-line forwarding
- Back-pressure and bandwidth control on each port
- Store-and-forward technology
- Automatic speed and duplex detection (half/full)
- 20 / 200 / 2000 Mbit/s in full duplex mode
- Auto MDI/MDI-X function
- Backplane: 16 Gbps
- MAC addresses: up to 8K
- Design & assembly
- Completely fanless
- Metal housing

DN-80114 | EAN 4016032441007 | Gigabit Ethernet Switch 8-port, 10 inch, unmanaged

DIGITUS® 8-port Gigabit Switch Desktop, Unmanaged, Metal housing

**DIGITUS® 8-Port RJ 45 GE Switch
8 x 10/ 100/1000 Mbit/s**

The DN-80066-1 offers a simple, cost-effective and powerful way to bring your home or office network up to Gigabit speed.



Technical details

- Gigabit speed: 8 adaptive 10/100/1000Mbps RJ45 ports offer ultra-fast network connections
- Simple installation: plug-and-play functionality, no configuration required
- High compatibility: Supports MDI/MDIX auto-flip for easy connection to various network devices
- Silent operation: fanless design for quiet and trouble-free operation
- Compact design: With dimensions of 140x67x26mm, it fits into any network environment
- Reliable performance: 16Gbps switching capacity and 11.9Mpps forwarding rate ensure smooth data traffic

DN-80066-1 | EAN 4016032496663 | DIGITUS® 8-Port RJ 45 GE Switch 8 x 10/ 100/1000 Mbit/s

DIGITUS® 8-Port Unmanaged PoE+ Switch 10" Gigabit

Gigabit Ethernet PoE switch 8-port PoE, 10 inch, 80W PoE budget

Supplies PoE devices centrally and reliably with power and Gigabit data, perfect for camera, WLAN and IoT installations.



Technical details

- Network & Performance
- 8 × 10/100/1000 Mbps RJ45 ports
- PoE standards: IEEE 802.3af/at (PoE+)
- Max. Power per port: up to 30 W (PoE+)
- Total PoE budget: ~120 W (depending on model)
- Auto MDI/MDI-X
- Non-Blocking Gigabit Switching
- Store-and-forward technology
- Gigabit speed per port
- Optimized for IP cameras, WLAN APs & IoT
- Stable data forwarding without packet loss
- Fanless - silent operation
- Robust metal housing
- Suitable for 10" network cabinets
- Compact design (typically approx. 250 × 150 × 42 mm)
- Design & assembly
- Completely fanless
- Metal housing
- Suitable for 10-inch rack mounting
- Weight: approx. 2 kg
- Electrics & environment
- Internal power supply unit, 100-240 V AC
- Power consumption: ~10-140 W
- Operating temperature: 0-40 °C
- Storage: -10-70 °C
- Humidity: 5-95 %, non-condensing

DN-95317 | EAN 4016032441038 | Gigabit Ethernet PoE switch 8-port PoE, 10 inch, 80W PoE budget

DIGITUS® 8-Port L2+ Managed Switch 10" Gigabit

L2 managed Gigabit Ethernet Switch 8-port, 10 inch

Enables professional segmentation, prioritization and protection of networks in a compact 10" switch.



Technical details

- Network & Performance
- 8 × 10/100/1000 Mbps RJ45
- Standards: IEEE 802.3, 802.3u, 802.3ab, 802.3x Full Duplex Flow Control, 802.3ab Link Aggregation
- Backplane: 16 Gbps
- Forwarding capacity: 11.9 Mpps
- Jumbo Frame Size: 16K
- MAC addresses: 8K
- LED: Power, Link/Act
- VLAN: Port-based & 802.1Q Tag-based VLANs
- Link aggregation: up to 8 groups
- Rate limit from 64 kbps
- Spanning tree: STP / RSTP / MSTP
- Ring protocol: EAPS
- Multicast: 256 multicast groups, IGMP snooping

DN-80117 | EAN 4016032464358 | L2 managed Gigabit Ethernet Switch 8-port, 10 inch

DIGITUS® 24-Port Gigabit Networkswitch 19 Inch, Unmanaged, 2 Uplink Ports, SFP

24-Port Gigabit + 2-Port Gigabit SFP Unmanaged PoE Switch

Wire-speed forwarding, intelligent identification, PoE output power of a single port supports up to 30W each, total PoE budget: 370W



Technical details

- Support IEEE802.3af/at Standard
- Single port output power up to 30W
- Automatic detection and identification of standard PoE power receiving devices, intelligent power supply, will not burn non-standard PoE power receiving devices or common devices
- Support port power supply prioritization, guarantee the continuous power supply of key nodes
- Panel indicators monitor working status and help fault analysis
- Support VLAN and CCTV function

DN-95348-2 | EAN 4016032492030 | 24-Port Gigabit + 2-Port Gigabit SFP Unmanaged PoE Switch

DIGITUS® 8-Port Gigabit PoE Networkswitch Managed, 2 Uplinks

L2 managed Gigabit Ethernet PoE Switch 8-port PoE + 2-port SFP, 86W PoE budget

Integrated Power over Ethernet (PoE) and network management features for small and medium network environments



Technical details

- 8-Port 10/100/1000Base-T with PoE support
- 2-Port Gigabit SFP Uplink
- Meets the network standards IEEE 802.3, IEEE802.3ad, IEEE802.1d, IEEE 802.3u, IEEE 802.3ab, IEEE802.1p, IEEE802.1x, IEEE802.1q, IEEE802.1w, IEEE802.1s, IEEE802.1z, IEEE802.3ah, IEEE802.1ag, IEEE 802.3af and IEEE802.3at
- Supports Port Configuration, PoE Port Configuration, Port Mirroring, Bandwidth Control, Broadcast Power Control
- Maximum PoE power of 86 watts

DN-95344 | EAN 4016032455103 | L2 managed Gigabit Ethernet PoE Switch 8-port PoE + 2-port SFP, 86W PoE budget

DIGITUS® Industrial 16-Port Gigabit Switch, Unmanaged

16 Port 10/100/1000Mbps Industrial Switch Wall-mount and DIN-Rail

Robust and durable industrial solution for high temperature ranges and rough industrial environments - redundant power supply possible



Technical details

- 16 x RJ45 ports 10/100/1000 Mbps
- Suitable for high temperature ranges from -40 °C to +80 °C
- Redundant power supply via terminal clamps
- Suitable for mounting on DIN rails (profile rail)
- Protects against impact and vibrations
- Integrated surge protection
- Full-duplex flow control IEEE802.3x
- Auto-Negotiation / Auto MDI/MDI-X Function
- Fanless design with protection type IP40

DN-651129 | EAN 4016032478089 | 16 Port 10/100/1000Mbps Industrial Switch Wall-mount and DIN-Rail



DIGITUS® Velcro fastener cable management system

The DIGITUS® Velcro cable management system is used for fast and optimal cable routing in network cabinets and wall enclosures.

The innovative Velcro cable management system consists of two components:

1. Self-adhesive mushroom head tape that adheres to all non-powder-coated surfaces in the cabinet. Please degrease it before use.

2. fleece/Velcro tape, which is ideal for bundling cable harnesses in the cabinet network. Intended use:

- Ideally suited for bundling all common data cables (both copper and fibre optic cables)
- Bundling of 2 - 48 data cables is possible without any problems (diameter up to 60 mm and more).

Ordering information

1. DN-CT-5M-25
Mushroom head tape 2.5 m self-adhesive, Velcro tape 5.0 m
2. DN-CT-10M-25
Mushroom head tape 5.0 m self-adhesive, loop/Velcro tape 10.0 m

DIGITUS® 8 Port Gigabit Ethernet Network Switch Flat, Industrial, Unmanaged

Industrial 8-Port Gigabit Flat Switch 5-port, DIN rail, extended temp. range

Robust industry solution, high temperature range, space-saving flat case for profile rail mounting



Technical details

- 8 x 10/100/1000 Base-TX Ethernet ports
- Suitable for DIN rail (top-hat rail) mounting
- Space-saving, flat housing
- Fanless design
- Store and forward technology for optimized data transfer
- Backplane capacity: 16 Gbps
- MAC address memory: 4K (auto-learning, auto-aging)
- Excellent protection against short circuits
- Lightning and surge protection

DN-651127 | EAN 4016032462842 | Industrial 8-Port Gigabit Flat Switch 5-port, DIN rail, extended temp. range

DIGITUS® 8-Port Gigabit Ethernet PoE Injektor 802.3bt, 250 W

Gigabit Ethernet PoE+ Injector Hub, 802.3bt 8-Port, PoE Power Budget 250W

Upgrade your power infrastructure with the DN-95118 8-Channel Mid-Span PoE solution – unlocking a new level of efficiency, reliability, and cost-effectiveness for your networked devices.



Technical details

- 8-Channel Power Distribution: The DN-95118 supports up to 8 channels, providing a versatile solution for multiple device installations.
- IEEE802.3bt Compliance: Ensures adherence to the latest PoE standards, guaranteeing compatibility with a wide range of devices.
- Compact and Cost-Effective: The space-saving design and affordability of the DN-95118 make it an efficient choice for businesses of all sizes.
- Eliminates External Power Supply: Say goodbye to the hassle of external power supplies and AC/DC cabling, reducing installation complexity and costs.
- Remote Powering: Perfect for installations where device accessibility is a challenge, the DN-95118 offers remote power delivery over existing Ethernet infrastructure.

DN-95118 | EAN 4016032495338 | Gigabit Ethernet PoE+ Injector Hub, 802.3bt 8-Port, PoE Power Budget 250W

DIGITUS® 16-Port 10G Ethernet PoE+ Injektor 802.3at, 250 W

10G Ethernet PoE+ Injector Hub, 802.3at 16-port, Power Pins:3/6(+), 1/2(-), 250W

Minimization of cabling effort for PoE-capable devices



Technical details

- 32 x 10/100/1000Mbps 2.5G /10G (16 x input data, 16 x output data+PoE)
- Compatible with the IEEE802.3af and IEEE802.3at standards
- PoE power supply via PIN 1,2(V-) and PIN 3,6(V+)
- Maximum total output of 250 watts
- Compatible with the standards IEEE802.3, IEEE802.3u, IEEE802.3ab
- Automatic cable detection - Auto-MDI/MDI-X function
- Auto-detection of full and half-duplex

DN-95116 | EAN 4016032430377 | 10G Ethernet PoE+ Injector Hub, 802.3at 16-port, Power Pins:3/6(+), 1/2(-), 250W

DIGITUS® 24-Port Gigabit Ethernet PoE+ Injektor 802.3af/at, 370 W

10G Ethernet PoE+ Injektor Hub, 802.3at 24-port, Power Pins:3/6(+), 1/2(-), 370W

Minimization of the cabling costs for PoE-capable devices



Technical details

- 24 10G ports with PoE+ support
- 370 watt performance with up to 30 watts per port
- Compatible with the IEEE802.3at standards
- Automatic surge protection
- Supports bandwidth up to 10Gbps
- 48 x 10/100/1000Mbps/2.5/10G (24 x input data, 24 x output data+PoE)

DN-95117 | EAN 4016032430384 | 10G Ethernet PoE+ Injektor Hub, 802.3at 24-port, Power Pins:3/6(+), 1/2(-), 370W

DIGITUS® Industrial 8+4 10G Uplink Port L3 Managed Gigabit Ethernet PoE Switch

Ind. 8+4SFP+PortL3 managed Gigabit Ethernet PoE Sw 8 x GE RJ45 +4 SFP+ Port, PoE

The DN-651161 is a high-performance industrial PoE switch that meets the highest demands in terms of performance, reliability and flexibility.



Technical details

- Supports IEEE802.3x flow control and backpressure
- Supports store-and-forward technology for optimized data transmission
- Automatic detection/adjustment of speed and half/full duplex
- Supports PoE according to standard IEEE802.3af/at (up to 30W)
- Bandwidth: 1.2 Tbps
- Packet forwarding size: 32 Mbit/s
- Size of the MAC address table: 32 K
- Jumbo frame rate : 10240 bytes
- ESD protection: 8 kV
- EFT protection: 8 kV
- Metal housing, IP40
- 4 kV lightning and surge protection
- Redundant power supply with reverse polarity protection function
- Power supply: 48 to 56 V (DC)

DN-651161 | EAN 4016032490258 | Ind. 8+4SFP+PortL3 managed Gigabit Ethernet PoE Sw 8 x GE RJ45 +4 SFP+ Port, PoE

DIGITUS® 16-Port Gigabit + 2-Port Gigabit SFP Multi-Mode Unmanaged PoE Switch

10G Ethernet PoE+ Injektor Hub, 802.3at 16-port, Power Pins:3/6(+), 1/2(-), 250W

Minimization of cabling effort for PoE-capable devices



Technical details

- 32 x 10/100/1000Mbps 2.5G /10G (16 x input data, 16 x output data+PoE)
- Compatible with the IEEE802.3af and IEEE802.3at standards
- PoE power supply via PIN 1,2(V-) and PIN 3,6(V+)
- Maximum total output of 250 watts
- Compatible with the standards IEEE802.3, IEEE802.3u, IEEE802.3ab
- Automatic cable detection - Auto-MDI/MDI-X function
- Auto-detection of full and half-duplex

DN-95116 | EAN 4016032430377 | 10G Ethernet PoE+ Injektor Hub, 802.3at 16-port, Power Pins:3/6(+), 1/2(-), 250W

DIGITUS® Industrial Gigabit Ethernet PoE+ Injektor
Injektor, 802.3af/at, 60 W

Industrial Gigabit PoE+ Injektor 802.3af 60W power output, DIN rail and wall mount design

High Power output with 60 watts



Technical details

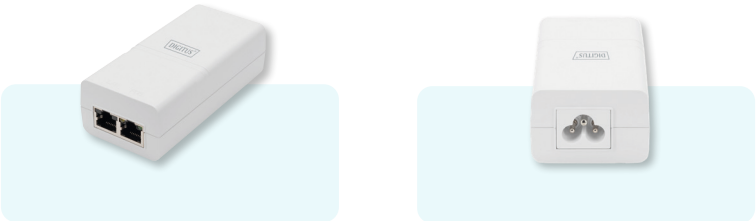
- Industrial Gigabit PoE+ Injektor 802.3af/at
- Meets the 802.3af/at PoE standard
- 48-55V output voltage, 60W

DN-651112 | EAN 4016032445845 | Industrial Gigabit PoE+ Injektor 802.3af 60W power output, DIN rail and wall mount design

DIGITUS® Gigabit Active 802.3af PoE Midspan
RJ45/DC/PoE

Gigabit Ethernet PoE+ Injektor 802.3af, 30 W small housing, white

The effective distance is 100 meters over Cat5e/ Cat6 cables. It is small in size but high performance



Technical details

- Provides 52Vdc, 0.58A power for remote PDs over 2 pairs output
- Supports both 10/100 Base-T and Gigabit device
- Works with a wide input voltage of 100-240 VAC, 50 or 60 Hz.
- Easily merge of power and data cables into a single cable
- Each output port has output current limited, short-circuit protection, complete Powered Device (PD) detection and classification

DN-95132 | EAN 4016032485834 | Gigabit Ethernet PoE+ Injektor 802.3af, 30 W small housing, white

DISCOVER OUR POE RANGE

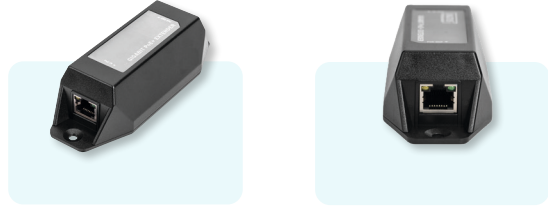


Learn more

DIGITUS® Gigabit Ethernet PoE+ Repeater 802.3at, 22 W

Gigabit Ethernet PoE+ Extender, 802.3at 1-port,
Power Pins:3/6(+), 1/2(-), 22W

Extend an existing PoE connection over the 100m distance limit



Technical details

- Gigabit Ethernet
- Fanless design ensures a quiet operation
- Fixing points for wall installation
- Requires no external power supply unit
- Automatic detection of PoE-enabled devices

DN-95123 | EAN 4016032391531 | Gigabit Ethernet PoE+ Extender, 802.3at 1-port, Power Pins:3/6(+), 1/2(-), 22W

DIGITUS® PoE Surge Protector (RJ45) DIN Rail Installation, Indoor

Indoor DIN PoE surge protector

Surge protection up to 10 kV for network and PoE devices



Technical details

- Protects your network devices against voltage surges up to 10 kV
- Support for Gigabit networks (10/100/1000Mbps)
- Supports PoE-Standards up to PoE++ (IEEE802.3af/at/bt)
- Single-port (1 x RJ45 input / 1 x RJ45 output)
- Easy installation by snapping onto a DIN rail (35 mm profile rail)
- Designed for a high temperature range from -40 °C to +85 °C
- Developed for industrial use
- Reliable protection against weather and lightning

DN-95421 | EAN 4016032473053 | Indoor DIN PoE surge protector

DIGITUS® Passiv PoE Cable Kit Splitter + Injektor

Passive PoE Cable Kit 1x Splitter PD cable, 1x
Injector PSE cable, White

Simplifies your Ethernet-enabled device installations by combining power and data onto one cable



Technical details

- Easily merge of power and data cables into a single cable
- Connection: 10/100 Mbit/s
- Assignment: 1/2/3/6 for data transfer, 4/5/7/8 for power supply

DN-95001 | EAN 4016032260240 | Passive PoE Cable Kit 1x Splitter PD cable, 1x Injector PSE cable, White

DIGITUS® Gigabit Ethernet PoE Splitter
802.3bt, 51 W

Gigabit Ethernet PoE Splitter, 802.3af/at/bt
Output: 12V/4.25A, 24V/2.125A, 51W

The PoE splitter delivers data and power of up to 51W to devices via a single Ethernet cable.



Technical details

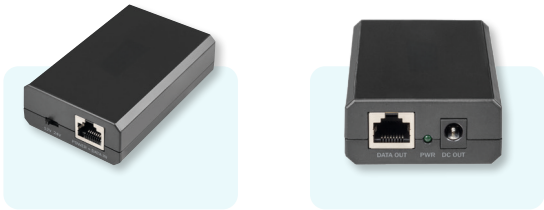
- Ethernet speed: 10/100/1000Mbps
Gigabit half/full duplex
- PoE standard: IEEE802.3af/bt
- Input: Power + data input (RJ45)
- Output: Data output (RJ45), DC output
- Plug-and-play installation - no configuration required
- Selectable output voltages: 12V/4.25A, 24V/2.125A,
- Splits the 48VDC power into different DC outputs via RJ45 Ethernet cable
- Status LED on the device (PoE ready/PoE in operation)
- Protection through insulation of the circuit

DN-95211 | EAN 4016032495406 | Gigabit Ethernet PoE Splitter, 802.3af/at/bt Output: 12V/4.25A, 24V/2.125A, 51W

DIGITUS® Gigabit Ethernet PoE+ Splitter
802.3at, 24 W

Gigabit Ethernet PoE+ Splitter, 802.3at Output:
5V/2A, 9V/2A, 12V/2A, 24W

Integrates Power over Ethernet technology to older non PoE network devices



Technical details

- Gigabit Ethernet Speed
- Fanless design ensures a quiet operation
- Requires no external power supply unit
- Adjustable output 5V/2A , 9V/2A, 12V/2A
- Support 5.5mm and 3.5mm power jack

DN-95205 | EAN 4016032423942 | Gigabit Ethernet PoE+ Splitter, 802.3at Output: 5V/2A, 9V/2A, 12V/2A, 24W

Discover
**OUR STRUCTURED
BUILDING CABLING**

Learn more



DIGITUS® AV- & MEDIA TECHNOLOGY

DIGITUS® Click & Present Pro - Wireless Collaboration System

Click & Present Pro - BYOD Collaboration System
HDMI, 2x TX, 1x RX

Wireless collaboration/presentation system -
presenting from a notebook, tablet or smartphone



Technical details

- Share, present & collaborate from your notebook, tablet or smartphone - transmission distance of up to 50 m
- Easy installation - no software or app required
- Simultaneous presentation of up to 4 participants in split screen
- Up to 30 participants (simultaneous connection to the recipient)
- Share from your notebook via HDMI transmitter (transmitter) or via wireless

- screen (Windows)/screen synchronization (macOS)
- Share from your tablet/smartphone via the screen synchronization (iOS, iPadOS/Android) of your mobile device
- Touch Panel Back Control - the touch-back function of the receiver unit enables gestures/controls to be sent wirelessly back to a Windows PC using a finger on a large touchscreen

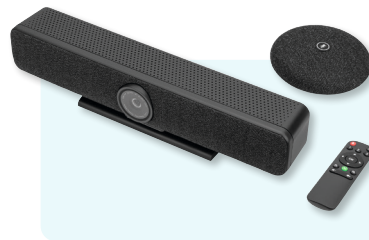
- Integrated whiteboard - the main menu of the receiver has a whiteboard function and, in combination with a touchscreen, enables quick notes to be taken during the meeting or presentation directly on the display
- Supports Windows, macOS, iOS, iPadOS, Android
- Expandable with additional HDMI transmitters (transmitters) - DS-55322

DS-55317 | EAN 4016032478492 | Click & Present Pro - BYOD Collaboration System HDMI, 2x TX, 1x RX

DIGITUS® 4K All-in-One Video Video Conferencing System

4K All-in-One Video Bar, Set ePTZ, AI, 4x mic/1x speaker, 1x table mic

The video conferencing system from DIGITUS® combines camera, microphone and loudspeaker in one device and is suitable for small to medium-sized rooms



Technical details

- 4K Ultra-HD ePTZ (electronic Pan-Tilt-Zoom) camera
- Ultra wide-angle lens - 120° diagonal, 110° horizontal, 78° vertical
- 4K Ultra HD video calls (up to 3840 x 2160 pixels / 30 frames per second)
- 2.8" sensor (Sony IMX415), 8 MP
- Auto-framing, Smart Zoom (4x digital zoom) & AI Face/Speaker Tracking - Thanks to AI (Artificial Intelligence),

- the video bar automatically adjusts the camera position, focus and zoom in order to capture the participants in the best possible way
- Beamforming microphones - 4 integrated beamforming microphones for voice pick-up and 5 m audio range (voice pick-up)
- Digital Noise Reduction & Acoustic Echo Cancellation - Suppresses unwanted background noise and eliminates echoes

- Additional desktop microphone included - additional 3 m voice pick-up (audio range), connection to the video bar via network cable (10 m, included)
- Hi-Fi loudspeaker with 5W max.
- Remote control included for convenient control of the functions
- Compatible with all common meeting software such as Teams, Zoom, etc.

DS-55580 | EAN 4016032487043 | 4K All-in-One Video Bar, Set ePTZ, AI, 4x mic/1x speaker, 1x table mic

DIGITUS® HDMI KVM Extender Over IP, Set

HDMI KVM Extender, 120 m, Full HD, 1080p over network cable (Cat 5, 5E, 6)

Extends the HDMI signal up to 120 m and offers the option of controlling the keyboard and mouse via USB on the receiver unit



Technical details

- Extends the maximum length for HDMI cables to up to 120 m via a simple network cable
- Extension of the signal (unlimited distance) via the existing local network infrastructure (via IP connection)
- Highest supported video resolution: 1080p / 60 Hz
- Supports KVM function - convenient control of mouse & keyboard via USB on the receiver unit
- Supports LAN standard 802.3 Ethernet 10/100/100 Mbps
- LED activity indicator for function, keyboard and mouse

DS-55202 | EAN 4016032429432 | HDMI KVM Extender, 120 m, Full HD, 1080p over network cable (Cat 5, 5E, 6)

DIGITUS® 4K HDMI Extender Set 4K/60Hz

4K HDMI 2.0 Extender Set, UHD 4K/60 Hz 70 m via CAT6 or higher

Extends the maximum length for HDMI cables to up to 70 m using only a single network cable between a transmitter and a receiver unit



Technical details

- Extends 4K/60Hz video content up to 70 m
- Supports Ultra HD (60Hz), 4096 x 2160p resolution
- PoC (Power over Cable) - only one unit requires an external power supply unit
- Integrated IR interface - simple control of the input source with a remote control
- Supports CAT 6 or higher network cables
- Supports HDCP 2.2

DS-55204 | EAN 4016032436270 | 4K HDMI 2.0 Extender Set, UHD 4K/60 Hz 70 m via CAT6 or higher

DIGITUS® HDBaseT™ HDMI Extender Set 150 m

HDBaseT HDMI Extender Set, 150 m 4K/60Hz, 18 Gbps, YUV 4:4:4, HDR

The HDBaseT™ HDMI Extender Set enables uncompressed and high-resolution signal transmission over long distances



Technical details

- Supports HDBaseT™ 1.0 via CAT6A/7/8 cable up to 100 m
- Supports 4K2K/60Hz (4:4:4)
- Maximum transmission distance (UHD 4K2K): 120 m
- Maximum transmission distance (Full HD 1080p): 150 m
- Video bandwidth: 18 Gbps
- HDMI loop-out on the transmitter unit
- PoC (Power over Cable) - only one unit requires an external power supply unit
- HDCP 2.2 / 1.4
- HDR, HDR10+, Dolby Vision, HLG
- RS232 signal transmission

DS-55508 | EAN 4016032478942 | HDBaseT HDMI Extender Set, 150 m 4K/60Hz, 18 Gbps, YUV 4:4:4, HDR

DIGITUS® Wireless HDMI Extender Splitter Set (100 m, 1x4)

Wireless HDMI Extender/Splitter Set 1x4, 100 m, Full HD

Wireless transmission of HDMI AV signals over a distance of up to 100 m (1:1 connection, unrestricted view) and distribution to up to 4 monitors



Technical details

- Wireless transmission of Full HD AV signals over a distance of up to 100 m (1:1 connection, unrestricted view)
- Supports point-to-point and multicast (point-to-multipoint) transmission
- Transmission of HDMI signals in Full HD with max. resolution of 1080p / 60 Hz
- Expandable up to 4 receiver units (DS-55347) and offers video splitter functionality with additional receivers
- Distribute your HDMI signal to up to 4 displays
- Additional HDMI output (loop-out) on the transmitter module for connecting an external monitor

DS-55346 | EAN 4016032496618 | Wireless HDMI Extender/Splitter Set 1x4, 100 m, Full HD

DIGITUS® 4K Wireless HDMI KVM Extender Set, 150 m

4K Wireless HDMI Extender/Splitter Set, 1x4 150 m, 1x TX, 1x RX

Transmits HDMI video and audio signals wirelessly in UHD 4K/30Hz over a distance of up to 150 m in clear view and offers KVM functionality



Technical details

- Wireless HDMI signal transmission up to 150 m (unrestricted view)
- Point-to-multipoint connection - 1x transmitter (source) + up to 4x receivers (output device)
- Additional receiver units available separately: DS-55329
- Supports wireless AV signal transmission with resolutions up to 4K UHD (2160p/30Hz)
- Simple operation and handling thanks to Plug & Play - plug in and go, no drivers or software required
- Automatic pairing & connection: Automatically establishes a connection via the most advantageous WiFi channel to ensure the best possible WiFi performance
- KVM functionality for connecting mouse & keyboard
- Touch Screen Back Control - Supports touch screen panels (via USB connection on the receiver)
- Power supply via USB-C connection + power supply unit (included)
- AES 128 bit encryption / WPA2 protocol
- HDMI 2.0 / HDCP 2.2

DS-55328 | EAN 4016032491248 | 4K Wireless HDMI Extender/Splitter Set, 1x4 150 m, 1x TX, 1x RX



DIGITUS® Wireless HDMI Extender Set 50 m

Wireless HDMI Extender Set, 50 m Dongle, 1 to 1, Full HD

Transmits HDMI video and audio signals wirelessly in Full HD over a distance of up to 50 m in clear view



Technical details

- Wireless HDMI signal transmission up to 50 m (with a clear view)
- Point-to-point connection - 1x transmitter (source) + 1x receiver (output device)
- Supports resolutions up to Full HD (1080p / 60 Hz)
- Simple operation and handling thanks to Plug & Play - plug in and get started
- Power supply via micro USB
- Transmitter & receiver can be supplied with power via the HDMI connection of your device (> 500 mA required)
- AES 128 bit encryption
- WPA2 protocol
- The set is ideal for subsequent, spontaneous or short-term installations in meeting, conference and congress rooms
- Automatic pairing & connection: Automatically establishes a connection via the most advantageous WiFi channel to ensure the best possible WiFi performance

DS-55318 | EAN 4016032478744 | Wireless HDMI Extender Set, 50 m Dongle, 1 to 1, Full HD

DIGITUS® 4K Wireless Video Extender 30 m (HDMI - HDMI)

4K Wireless HDMI Extender Set, 30 m HDMI - HDMI, 4K/30 Hz

Transmits HDMI video and audio signals wirelessly in UHD 4K/30Hz over a distance of up to 30 m with unrestricted visibility



Technical details

- Wireless HDMI signal transmission up to 30 m (unrestricted view)
- Point-to-point connection - 1x transmitter (source) + 1x receiver (output device)
- Supports resolutions up to 4K UHD (4K/30Hz)
- Simple operation and handling thanks to Plug & Play - plug in and go, no drivers or software required
- Automatic pairing & connection: Automatically establishes a connection via the most advantageous WiFi channel to ensure the best possible WiFi performance
- Power supply via USB-C connection

DS-55323 | EAN 4016032491194 | 4K Wireless HDMI Extender Set, 30 m HDMI - HDMI, 4K/30 Hz

DIGITUS® 4K Wireless Video Extender 30 m (USB-C - HDMI)

4K Wireless AV Extender Set, 30 m USB-C - HDMI, 4K/30 Hz

Transmits video and audio signals wirelessly in UHD 4K/30Hz over a distance of up to 30 m with unrestricted visibility



Technical details

- Wireless HDMI signal transmission up to 30 m (unrestricted view)
- Point-to-point connection - 1x transmitter (source) + 1x receiver (output device)
- Supports resolutions up to 4K UHD (4K/30Hz)
- Simple operation and handling thanks to Plug & Play - plug in and go, no drivers or software
- Automatic pairing & connection: Automatically establishes a connection via the most advantageous WiFi channel to ensure the best possible WiFi performance
- Power supply via USB-C connection
- AES 128 bit encryption / WPA2 protocol
- HDMI 2.0 / DP 1.2
- HDCP 2.2/1.3

DS-55324 | EAN 4016032491200 | 4K Wireless AV Extender Set, 30 m USB-C - HDMI, 4K/30 Hz

DIGITUS® 4K HDMI Splitter

1x8

1x8 HDMI Splitter, 4K/60Hz HDCP 2.2, EDID Control

The DIGITUS® HDMI Splitter splits/mirrors your HDMI device's audio and video signals on 8 TVs, monitors or projectors with a resolution of max. 4K / 60 Hz.



Technical details

- Distributes an HDMI signal onto 8 TVs/monitors/projectors
- EDID management: Auto/Copy/Downscaler
- Max. resolution: 4K/60Hz (4:4:4)
- Video bandwidth: 18 Gbps
- Supports High Dynamic Range (HDR)
- Supports HDCP 2.2
- Supports Deep Color (36-bit)
- HDMI 2.0

DS-55338 | EAN 4016032495598 | 1x8 HDMI Splitter, 4K/60Hz HDCP 2.2, EDID Control

DIGITUS® 4K HDMI Splitter

1x4

1x4 HDMI Splitter, 4K/60Hz HDCP 2.2, EDID Control

The DIGITUS® HDMI Splitter splits/mirrors your HDMI device's audio and video signals on 4 TVs, monitors or projectors with a resolution of max. 4K / 60 Hz.



Technical details

- Distributes an HDMI signal onto 4 TVs/monitors/projectors
- EDID management: Auto/Copy/Downscaler
- Power supply via Micro USB cable (included)
- Max. resolution: 4K/60Hz (4:4:4)
- Video bandwidth: 18 Gbps
- Supports High Dynamic Range (HDR)
- Supports HDCP 2.2
- Supports Deep Color (36-bit)
- HDMI 2.0

DS-55337 | EAN 4016032495581 | 1x4 HDMI Splitter, 4K/60Hz HDCP 2.2, EDID Control

DIGITUS® 4K HDMI Splitter

1x2

1x2 HDMI Splitter, 4K/60Hz HDCP 2.2, EDID Control

The DIGITUS® HDMI Splitter splits/mirrors your HDMI device's audio and video signals on two TVs, monitors or projectors with a resolution of max. 4K / 60 Hz.



Technical details

- Distributes an HDMI signal onto 2 TVs/monitors/projectors
- EDID management: Auto/Copy/Downscaler
- Power supply via Micro USB cable (included)
- Max. resolution: 4K/60Hz (4:4:4)
- Video bandwidth: 18 Gbps
- Supports High Dynamic Range (HDR)
- Supports HDCP 2.2
- Supports Deep Color (36-bit)
- HDMI 2.0

DS-55336 | EAN 4016032495574 | 1x2 HDMI Splitter, 4K/60Hz HDCP 2.2, EDID Control

DIGITUS® 4K HDMI Switch

3x1

3x1 HDMI Switch, 4K/60Hz HDCP 2.2

Extend your TV/monitor with additional HDMI connections – Switch conveniently between the signal sources without replugging



Technical details

- Switch conveniently between 3 signal sources via remote control, on the device itself or via automatic recognition.
- Additional HDMI connections for your output device - 3 signal sources via just 1 HDMI connection/cable on the screen
- Power supply via Micro USB cable (included)
- Max. resolution: 4K/60Hz
- Video bandwidth: 18 Gbps
- Supports High Dynamic Range (HDR)
- Supports HDCP 2.2
- Supports Consumer Electronic Control (CEC)
- Supports Deep Color (36-bit)
- HDMI 2.0

DS-55331 | EAN 4016032495529 | 3x1 HDMI Switch, 4K/60Hz HDCP 2.2

DIGITUS® 4K HDMI Switch

5x1

5x1 HDMI Switch, 4K/60Hz HDCP 2.2

Extend your TV/monitor with additional HDMI connections – Switch conveniently between the signal sources without replugging



Technical details

- Switch conveniently between 5 signal sources via remote control, on the device itself or via automatic recognition.
- Additional HDMI connections for your output device - 5 signal sources via just 1 HDMI connection/cable on the screen
- Power supply via Micro USB cable (included)
- Max. resolution: 4K/60Hz
- Video bandwidth: 18 Gbps
- Supports High Dynamic Range (HDR)
- Supports HDCP 2.2
- Supports Consumer Electronic Control (CEC)
- Supports Deep Color (36-bit)
- HDMI 2.0

DS-55332 | EAN 4016032495536 | 4K HDMI Switch, 5x1

DIGITUS® 4K HDMI Switch

3x1

3x1 HDMI Switch, 8K/60Hz (4:4:4), HDR, HDCP 2.3

Extend your TV/monitor with additional HDMI connections – Switch conveniently between the signal sources without replugging



Technical details

- Switch conveniently between 3 signal sources via remote control, on the device itself or via automatic recognition.
- Additional HDMI connections for your output device - 3 signal sources via just 1 HDMI connection/cable on the screen
- Power supply via USB-C cable (included)
- Max. resolution: 8K/60Hz (4:4:4)
- Video bandwidth: 48 Gbps
- Supports High Dynamic Range (HDR)
- Supports HDCP 2.3
- Supports Consumer Electronic Control (CEC)
- Supports Deep Color (36-bit)
- HDMI 2.1

DS-55333 | EAN 4016032495543 | 3x1 HDMI Switch, 8K/60Hz HDCP 2.3

DIGITUS® 8K HDMI Switch

5x1

5x1 HDMI Switch, 8K/60Hz (4:4:4), HDR, HDCP2.3

Extend your TV/monitor with additional HDMI connections – Switch conveniently between the signal sources without replugging



Technical details

- Switch conveniently between 5 signal sources via remote control, on the device itself or via automatic recognition.
- Additional HDMI connections for your output device – 5 signal sources via just 1 HDMI connection/cable on the screen
- Power supply via USB-C cable (included)
- Max. resolution: 8K/60Hz (4:4:4)
- Video bandwidth: 48 Gbps
- Supports High Dynamic Range (HDR)
- Supports HDCP 2.3
- Supports Consumer Electronic Control (CEC)
- Supports Deep Color (36-bit)
- HDMI 2.1

DS-55334 | EAN 4016032495550 | 5x1 HDMI Switch, 8K/60Hz (4:4:4), HDR, HDCP2.3

DIGITUS® 8K HDMI Switch

4x1

4x1 HDMI Switch, 8K/60Hz (4:4:4), Toslink, Stereo, EDID Control

Expand your TV/monitor with additional HDMI connections – Convenient switching between signal sources without having to reconnect & additional audio extractor: Toslink / stereo (3.5 mm) for separate playback of the audio signal



Technical details

- Convenient switching between 4 signal sources via remote control, on the device itself or via automatic detection
- Audio extractor: Toslink / stereo (3.5 mm) – decoupling and separate playback of the audio signal
- EDID switch / management
- Max. Resolution: 8K/60Hz (4:4:4)
- Video bandwidth: 48 Gbps
- Supports High Dynamic Range (HDR)
- Supports HDCP 2.3
- Supports CEC (Consumer Electronics Control)
- Supports Deep Color (36 bit)
- HDMI 2.1

DS-55335 | EAN 4016032495567 | 4x1 HDMI Switch, 8K/60Hz (4:4:4), Toslink, Stereo, EDID Control

DIGITUS® 4x2 HDMI Matrix Switch / Multi-Viewer

4K/30Hz

4x2 HDMI Matrix / Multi-Viewer, 4K/30Hz SPDIF, Stereo, RS232

Switch conveniently between up to 4 HDMI sources and 2 playback devices, and distribute your media content independently / Multi-viewer offers 6 modes for individual display of sources (split-screen, PIP)



Technical details

- Switch between up to 4 HDMI sources and 2 playback devices via remote control, on the device itself or via RS232 control
- Multi-viewer: 6 modes for individual display of sources at HDMI output A (primary) or at HDMI output A & B simultaneously (secondary) via remote control or on the device itself
- Audio extractor: Toslink / Stereo (3.5 mm) – Decoupling / separate reproduction of the audio signal
- Max. resolution: 4K/30 Hz
- RS232 control via micro USB
- Scaler (changeover switch) – Adjustment of HDMI output resolution (1080p, 1600p, 4K/30Hz)
- Separate on/off switch
- Video bandwidth: 10.2 Gbps
- HDCP 1.4
- HDMI 1.4

DS-55345 | EAN 4016032495659 | 4x2 HDMI Matrix / Multi-Viewer, 4K/30Hz SPDIF, Stereo, RS232



DIGITUS® CABLES & PERIPHERALS

DIGITUS® USB 4.0/4 Typ-C Connection Cable

USB 4.0 connection cable, Type - C to Type - C max. res. 8K@60Hz,4K@60Hz, PD3.1,40Gbits/s,1m,bl

The USB 4.0 cable is an all-rounder and supports the following transmission types: audio/video/data transfer/charging function

Lengths: 1m; 3m



Technical details

- Fast data transfer rates of up to 40 Gbit/s
- Transfers music, images, movies and series in seconds
- Backwards compatible with Thunderbolt
- Supports a charging power of 240W and complies with the new USB Power Delivery Revision 3.1 (PD 3.1) charging technology with 48V, 5A and 240W
- Supports Ultra HD 8K (7680 × 4320 pixels at 60Hz). Ideal for enjoying HD movies, series and videos in impressive resolution and picture quality.

AK-300343-008-S | EAN 4016032481089 | USB 4.0 connection cable, Type - C to Type - C max. res. 8K@60Hz,4K@60Hz, PD3.1,40Gbits/s

DB-300443-XXX-S | EAN 4016032485889 | USB 4 connection cable, TypeC to TypeC, AI-Housing PP braid 8K@60Hz,4K@60Hz,PD3.1

DIGITUS® USB-C Connection Cable 0,5m; 1m; 2m

USB-C Silicone charging cable, USB-A - USB-C 0,5m, USB 2.0, 60W, black

Fast charging and synchronization with the high-quality and soft silicone connection cable

Lengths: 0,5m; 1m; 2m

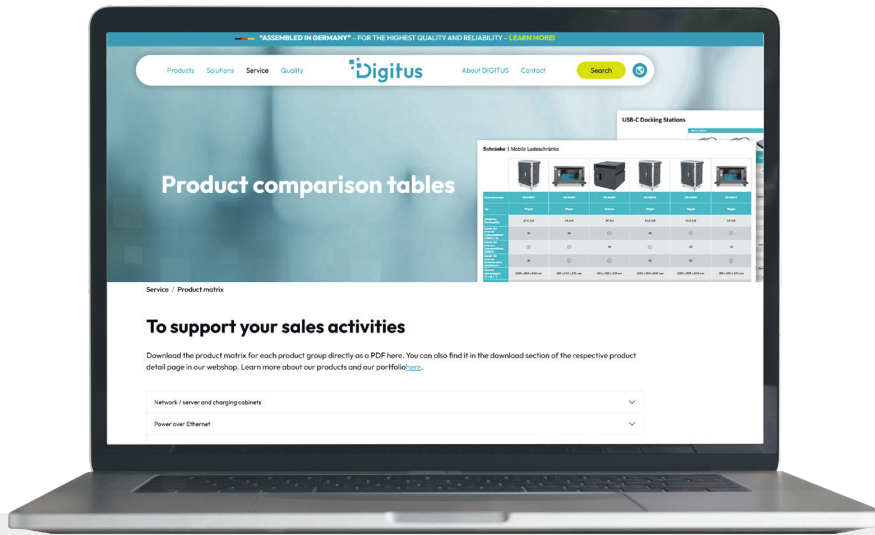


Technical details

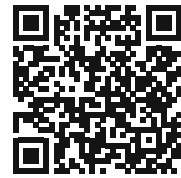
- Soft and high-quality silicone gel material for durability and flexibility. Up to 25 times more durable than standard cables.
- Hardly any tangles or kinks: The cable remains tangle-free even after frequent bending, twisting and kinking, giving you stress-free use.
- Outstanding durability: With an estimated service life of up to 25,000 bends, our cable is extremely hard-wearing and remains reliable even with intensive use.
- Includes cable tie/cable loop for neat and tidy storage.
- Transfer speed up to 480Mbps (USB 2.0)
- Supports the USB power delivery function with 20V, 3A and 60W

AK-300340-XXX-S | EAN 4016032495437 | USB-C Silicone charging cable, USB-A - USB-C 0,5m, USB 2.0, 60W, black

AK-300340-XXX-W | EAN 4016032495444 | USB-C Silicone charging cable, USB-A - USB-C 0,5m, USB 2.0, 60W, white



SCAN ME



DIGITUS® Product matrix tables

PRODUCT COMPARISON MADE EASY!

We have now compiled our extensive range of product categories into comparison tables, which provide you with a quick overview of the features and details.

By the way: You will of course also find the comparison table on the respective product page. To view it, scroll down to

the bottom of the product detail page in the web shop and download the PDF from the download area.

Our matrix overviews are available for download as PDF files in the following categories, among others:



DIGITUS® USB-C Silicone Connection Cable 0,5m; 1m; 2m

USB-C Silicone charging cable, USB-C - USB-C
0,5m, USB 2.0, 60W

Fast charging and synchronization with the high-quality and soft silicone connection cable



Lengths: 0,5m; 1m; 2m



Technical details

- Soft and high-quality silicone gel material for durability and flexibility. Up to 25 times more durable than standard cables.
- Hardly any tangles or kinks: The cable remains tangle-free even after frequent bending, twisting and kinking, giving you stress-free use.
- Outstanding durability: With an estimated service life of up to 25,000 bends, our cable is extremely hard-wearing and remains reliable even with intensive use.
- Includes cable tie/cable loop for neat and tidy storage.
- Transfer speed up to 480Mbps (USB 2.0)
- Supports the USB power delivery function with 20V, 3A and 60W

AK-300341-XXX-S | EAN 4016032495437 | USB-C Silicone charging cable, USB-C - USB-C 0,5m, USB 2.0, 60W, black

AK-300341-XXX-W | EAN 4016032495802 | USB-C Silicone charging cable, USB-C - USB-C 0,5m, USB 2.0, 60W, white

DIGITUS® Lightning Silicone Connection Cable USB-A - Lightning

USB Silicone charging cable, USB-A - Lightning
2m, USB 2.0, 12W

Fast charging and synchronization with the high-quality and soft silicone connection cable



Lengths: 0,5m; 1m; 2m



Technical details

- Soft and high-quality silicone gel material for durability and flexibility. Up to 25 times more durable than standard cables.
- Hardly any tangles or kinks: The cable remains tangle-free even after frequent bending, twisting and kinking, giving you stress-free use.
- Outstanding durability: With an estimated service life of up to 25,000 bends, our cable is extremely hard-wearing and remains reliable even with intensive use.
- Includes cable tie/cable loop for neat and tidy storage.
- Transfer speed up to 480Mbps (USB 2.0)

AK-600108-XXX-S | EAN 4016032495871 | USB Silicone charging cable, USB-A - Lightning 2m, USB 2.0, 12W, black

AK-600108-XXX-W | EAN 4016032495871 | USB Silicone charging cable, USB-A - Lightning 2m, USB 2.0, 12W, white



DIGITUS® Lightning Silicone Connection Cable USB-C - Lightning

USB Silicone charging cable, USB-C - Lightning
0,5m, USB 2.0, 60W

Fast charging and synchronization with the high-quality and soft silicone connection cable



Lengths: 0,5m; 1m; 2m



Technical details

- Soft and high-quality silicone gel material for durability and flexibility. Up to 25 times more durable than standard cables.
- Hardly any tangles or kinks: The cable remains tangle-free even after frequent bending, twisting and kinking, giving you stress-free use.
- Outstanding durability: With an estimated service life of up to 25,000 bends, our cable is extremely hard-wearing and remains reliable even with intensive use.

AK-600110-XXX-S | EAN 4016032495949 | USB Silicone charging cable, USB-C - Lightning 0,5m, USB 2.0, 60W, black

AK-600108-XXX-W | EAN 4016032495956 | USB Silicone charging cable, USB-A - Lightning 0,5m, USB 2.0, 12W, white

DIGITUS® USB Silicone Connection Cable USB 10Gbps, 0,5m; 1m; 2m

USB Silicone connection cable, USB-C - USB-C
0.5m, USB 3.2 Gen2, 10G, 4K, 100W, black

Fast charging and synchronization with the high-quality and soft silicone connection cable. 4K video transmission is possible with USB version 3.2 Gen2



Lengths: 1m; 3m



Technical details

- Soft and high-quality silicone gel material for durability and flexibility. Up to 25 times more durable than standard cables.
- Hardly any tangles or kinks: The cable remains tangle-free even after frequent bending, twisting and kinking, giving you stress-free use.
- Outstanding durability: With an estimated service life of up to 10,000 bends, our cable is extremely hard-wearing and remains reliable even with intensive use.
- Includes cable tie/cable loop for neat and tidy storage.
- Transfer speed up to 10 Gbps (USB 3.2 Gen2)
- Supports the USB power delivery function with 20V, 5A and 100W

AK-300342-XXX-S | EAN 4016032496069 | USB Silicone connection cable, USB-C - USB-C 0.5m, USB 3.2 Gen2, 10G, 4K, 100W, schwarz

DIGITUS® USB Silicone Connection Cable USB 40Gbps, 0,5m; 1m; 2m

USB Silicone connection cable, USB-C - USB-C
0.5m, USB 4.0 Gen3, 40G, 240W, 8K, black

Fast charging and synchronization with the high-quality and soft silicone connection cable. 8K video transmission is possible with USB version 4.0 Gen3



Lengths: 0,5m; 1m; 2m



Technical details

- Soft and high-quality silicone gel material for durability and flexibility. Up to 25 times more durable than standard cables.
- Hardly any tangles or kinks: The cable remains tangle-free even after frequent bending, twisting and kinking, giving you stress-free use.
- Outstanding durability: With an estimated service life of up to 10,000 bends, our cable is extremely hard-wearing and remains reliable even with intensive use.
- Includes cable tie/cable loop for neat and tidy storage.
- Transfer speed up to 40 Gbps (USB 4.0 Gen3)
- Supports the USB power delivery function with 48V, 5A and 240W

AK-300344-XXX-S | EAN 4016032496090 | USB Silicone connection cable, USB-C - USB-C 0.5m, USB 4.0 Gen3, 40G, 240W, 8K, black



DIGITUS® USB Type-C USB Type-C AOC AOC AV Cable

HDMI AOC Connection Cable Type USB-C - USB-C
M/M, 10.0m, UHD 4K, 4K@60Hz, USB 3.1, bl

Transmission of uncompressed video and audio signals in UHD 4K resolution with 21.6 Gbps bandwidth.

Lengths: 10m; 15m; 20m



Technical details

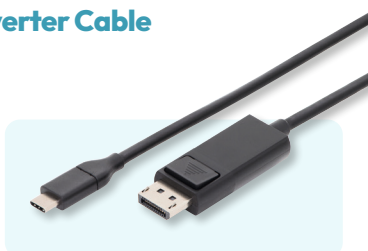
- The active USB Type - C AOC AV connection cable is based on a hybrid construction of copper & fiber optic cables and thus enables bandwidths of up to 21.6 Gbps.
- The flexible yet robust cable is also characterized by low bending radii and very good transmission of uncompressed audio and video content over longer distances.
- Further advantages of the hybrid fiber optic cables are the very small bending radius and the low weight, without compromising the high picture quality and plug & play installation.

AK-330160-XXX-S | EAN 4016032482611 | HDMI AOC Connection Cable Type USB-C - USB-C M/M, 10.0m, UHD 4K, 4K@60Hz, USB 3.1, bl

DIGITUS® USB Type-C Gen 2 Adapter / Converter Cable Type-C to DP

USB Type-C adapter cable, Type-C to DP M/M,
2.0m, 4K/60Hz, 32,4 GB, bl, gold

Connect your USB-C device directly to a monitor, TV or projector - you don't need an additional adapter.



Technical details

- Your USB-C equipped device must support video mode (DP Alt Mode) to be compatible with this adapter / converter cable.
- The video output capability depends on the graphics card of your notebook and the connected monitor. Some monitors also limit the available resolution.
- Supports up to 4K/2K with 60Hz
- Support for digital audio transmission in stereo
- Data transfer rate up to 32.4 Gbit/s
- Type C plug can be used on both sides

AK-300333-XXX-S | EAN 4016032451365 | USB Type-C adapter cable, Type-C to DP M/M, 2.0m, 4K/60Hz, 32,4 GB, bl, gold

DIGITUS® 16K DisplayPort Connection Cable Version 2.1, 80G

Premium DisplayPort Connection Cable, Type DP M/M, 1.0m, Alu Housing, UHD 16K, DP 2.1, bl

Supported video formats: 16K @ 60 Hz, 8K @ 120 Hz, 4K @ 240 Hz, 2K @ 240 Hz



Lengths: 0,5m; 1m; 2m



Technical details

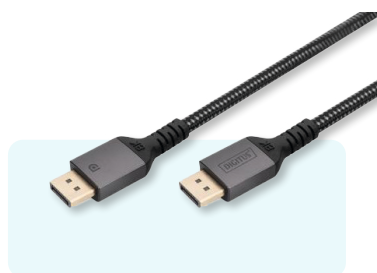
- Connects PC/Computer, notebook or graphics card for gaming with DP-capable devices such as TVs, screens, monitors, projectors, displays
- Supported video formats: 16K @ 60 Hz, 8K @ 120 Hz, 4K @ 240 Hz, 2K @ 240 Hz
- Backwards-compatible with DP standards 2.0, 1.4, 1.3 and 1.2
- Signal transfer rate of up to 80 Gbps
- Gold-plated plug for optimal signal quality and corrosion protection

DB-340111-XXX-S | EAN 4016032491187 | Premium DisplayPort Connection Cable, Type DP M/M, 1.0m, Alu Housing, UHD 16K, DP 2.1

DIGITUS® 8K DisplayPort Connection Cable 1.4 Version

Premium DisplayPort Connection Cable, Type DP M/M, 3.0m, Alu Housing, gold, UHD 8K, DP 1.4, black

The DIGITUS® 8K DisplayPort Connection Cable Version 1.4 already meets the requirements for future high-definition devices (TV, projector, monitor) of the next generation. The ultimate 8K experience with Ultra-HD II resolutions of up to 7680 x 4320



Lengths: 1m; 3m



Technical details

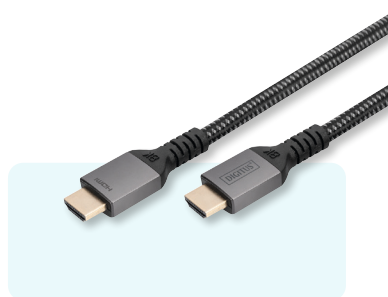
- DisplayPort plug to DisplayPort plug
- Connects PC/Computer, notebook or graphics card for gaming with DP-capable devices such as TVs, screens, monitors, projectors, displays
- Supports the video formats 4K/2K@120Hz, 5K@60Hz or 8K@60Hz and resolutions of 3840 x 2160p, 5120 x 2880p and 7680 x 4320p - Also enables a color depth of 24 bits
- Compatible with DP standards 1.4, 1.3 and 1.2
- The gold-plated precision plugs provide optimal signal quality and corrosion protection

AK-3003331-XXX-S | EAN 4016032481232 | Premium DisplayPort Connection Cable, Type DP M/M, 1.0m, Alu Housing, gold, UHD 8K

DIGITUS® 8K PREMIUM HDMI 2.1 Connection Cable

HDMI Ultra Premium High Speed Connection Cable, A M/M, 1.0m, Alu Housing, UHD, 8K@60Hz, gold, black

The DIGITUS® 8K Ultra High Speed Connection Cable already meets the requirements for future high-definition devices (TV, projector, monitor) of the next generation with higher resolutions, higher data rates and higher refresh rates.



Lengths: 1m; 2m; 3m



Technical details

- HDMI plug to HDMI plug
- Enables the ultimate 8K experience with Ultra-HD-2 resolutions of up to 7,680 x 4,320 pixels (supported with HDR) and high speed with a refresh rate of 60 Hz (4K with 120 Hz)
- 3D signal transfer combined with Dolby TrueHD support enables a one-of-a-kind home cinema experience, perfect for Netflix, Disney+, Sky, Amazon Prime Video or DAZN
- The cable supports ARC (Audio Return Channel) for bidirectional audio transfer, and CEC (Consumer Electronic Control)
- The digital encryption system HDCP protects the transmission of audio and video files against external influences - Lip Sync delivers perfect lip synchronization, delayed audio output is a thing of the past
- The gold-plated precision plugs provide optimal signal quality and corrosion protection

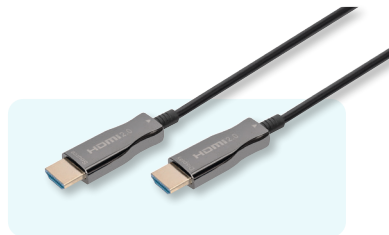
DB-330200-XXX-S | EAN 4016032481201 | HDMI Ultra Premium High Speed Connection Cable, A M/M, 1.0m, Alu Housing



DIGITUS® HDMI & DP AOC Hybrid Fiber Optic Cable UHD, 4K, 8K

HDMI AOC Connection Cable, Type A M/M, 10.0m, Ultra HD, 4K@60 Hz, gold, black

Transfer of uncompressed video and audio signals over a distance of up to 10 m in UHD 4K resolution with 18 Gbps bandwidth.



Lengths: 10m; 15m; 20m; 30m



Technical details

- Active fiber optic data transfer of up to 18Gbps
- Resolution up to 4K@60Hz
- Transfers uncompressed HDMI® video and audio signals over a distance of 10 m
- Flexible installation with a tight bending radius
- Compact cable with small diameter
- Immune to electromagnetic interference (EMI)
- Supports HDR (High Dynamic Range)
- Meets HDMI 2.0b standard requirements (backwards-compatible)
- Hybrid construction: fiber optic and copper cores
- Simple Plug and Play installation

AK-330125-XXX-S | HDMI HDMI AOC Connection Cable, Type A M/M, 10.0m, Ultra HD, 4K@60 Hz, gold

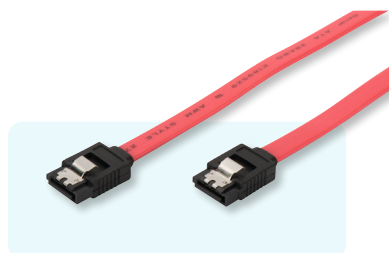
AK-330126-XXX-S | HDMI AOC Connection Cable, Type A M/M, 10.0m, Ultra HD, 8K@60 Hz, gold

AK-340107-XXX-S | DisplayPort AOC Connection Cable M/M, 10.0m, UHD 8K, 8K@60Hz, DP 1.4, gold

DIGITUS® SATA Connection Cable

SATA connection cable, L-type, w/ latch F/F, 0.3m, straight, SATA II/III, red

With latch for a secure connection



Lengths: 0,3m; 0,5m

Technical details

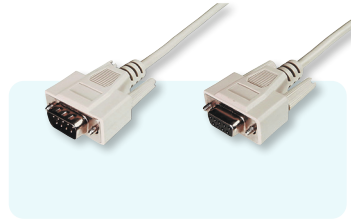
- Compatible with Serial ATA standards
- 7-wired cable, UL21149
- 2 fixing angles included
- Provides a safe connection between hard disk and mainboard
- Provides a safe connection between hard disk and mainboard

AK-400102-XXX-R | EAN 4016032299943 | SATA connection cable, L-type, w/ latch F/F, 0.3m, straight, SATA II/III, red

DIGITUS® Data Transfer Extension Cable D-Sub9/M - D-Sub9/F

Datatransfer extension cable, D-Sub9 M/F, 2.0m, serial, molded

Enables a secure and stable connection



Lengths: 2m; 3m; 5m; 10m

Technical details

- The additional screw connection at both the input and output ensures maximum safety for professional use.
- Simply screw the screw cap into the socket provided - done
- No accidental removal of the plug possible

AK-610203-XXX-E | Datatransfer extension cable, D-Sub9 M/F, 2.0m, serial, molded

Share, present and collaborate

WIRELESS SIGNAL DISTRIBUTION

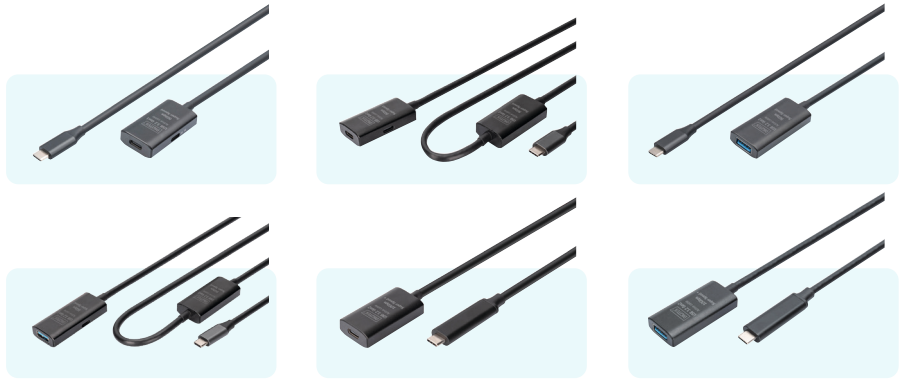
DIGITUS® presentation solutions enable wireless transmission of screen content and are perfect for use in meeting and conference rooms. Discover our various sets for different needs.

Learn more



DIGITUS® Active USB 3.2 Gen1 5G Extension Cable USB-C - USB-C

The DIGITUS® USB 3.2 Gen1 active extension cable extends the cable length of a USB 3.2 device by 5 metres and ensures a fast data transfer rate of 5 Gbit/s throughout the entire length.



Technical details

- Extends the maximum permissible USB cable length
- Connection 1: USB-C plug
- Connection 2: USB-C socket
- Data transfer rates: up to 5 Gbit/s (USB 3.2 Gen1, Super Speed)
- Complies with USB 3.2 Gen1 specification, backward compatible with USB 2.0 / 1.1
- Supports USB Low Speed (1.5 Mbit/s), Full Speed (12 Mbit/s), High Speed (480 Mbit/s), Super Speed (5 Gbit/s) Plug & Play
- Signal amplification: Integrated active signal amplifier, additional USB-C power supply

DA-73108 | EAN 4016032497387 | Active USB-C Extension Cable, 5m 5G, USB 3.2 Gen1, USB-C - USB-C (M/F)

DA-73109 | EAN 4016032497394 | Active USB-C Extension Cable, 10m 5G, USB 3.2 Gen1, USB-C - USB-C (M/F)

DA-73110 | EAN 4016032497400 | Active USB-C Extension Cable, 5m 5G, USB 3.2 Gen1, USB-C - USB-A (M/F)

DA-73111 | EAN 4016032497417 | Active USB-C Extension Cable, 10m 5G, USB 3.2 Gen1, USB-C - USB-A (M/F)

DA-73112 | EAN 4016032497424 | Active USB-C Extension Cable, 5m 10G, USB 3.2 Gen2, USB-C - USB-C (M/F)

DA-73113 | EAN 4016032497431 | Active USB-C Extension Cable, 5m 10G, USB 3.2 Gen2, USB-C - USB-A (M/F)



DIGITUS® Flat Telephone Installation Cable

**Modular Flat Cable, 8 Wire Length 100 M,
AWG 26, CCA, black**



Technical details

- Modular cable unshielded, AWG26
- Flat cable with 4, 6, or 8 wires (D-shape)
- 100m per reel
- Color: black with color coded wires
- Other lengths per reel, versions, and colors on request

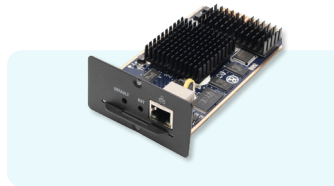
AK-460702-100-S | EAN 4016032329879 | Modular Flat Cable, 8 Wire Length 100 M, AWG 26, CCA, black

AK-460700-100-S | EAN 4016032329855 | Modular Flat Cable, 4 Wire Length 100 M, AWG 26, CCA, black

AK-460701-100-S | EAN 4016032329862 | Modular Flat Cable, 6 Wire Length 100 M, AWG 26, CCA, black

DIGITUS® IP Function Module For KVM Switches

**IP function module for KVM switches for
DS-23200-2, DS-23000-2, remote control
Remotely access computers via LAN, WAN,
or the Internet**



Technical details

- Remote KVM (keyboard, video and mouse) access over IP
- Remotely access computers via LAN, WAN, or the Internet
- Full control under all OS, in BIOS level, during boot, or at Blue Screens
- Remote port selection switch for convenient switch placement
- Remote WEB-based management
- DES encryption of all transmitted data
- IP access via 10/100/1000Mbps LAN

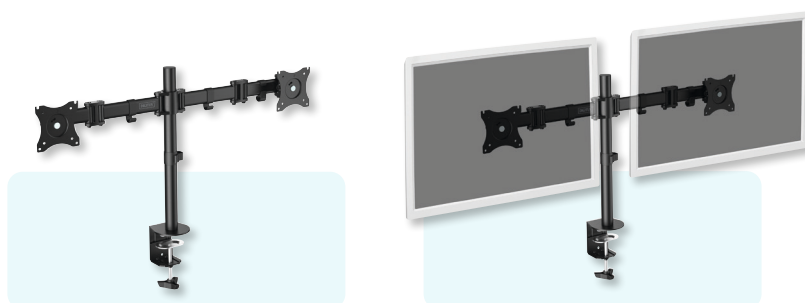
DS-51000-1 | EAN 4016032430018 | IP function module for KVM switches for DS-23200-2, DS-23000-2, remote control



DIGITUS® Dual Monitor Mount Stand with Clamp Fastening

Dual Monitor Desk Clamp Mount, 15-27", black max. load 2x8Kg, VESA max 100x100

Universal dual monitor stand with clamp mount up to 69cm (27")



Technical details

- Suitable for VESA standard distances 75 x 75 and 100 x 100 mm
- For table tops up to 7.5 cm
- For monitors up to 69cm (27") and 16kg maximum weight
- Separate height adjustment by 15 mm for perfect alignment of your monitors
- Freely adjustable vertical tilt angle up to 45 degrees

DA-90349 | EAN 4016032382676 | Dual Monitor Desk Clamp Mount, 15-27", black max. load 2x8Kg, VESA max 100 x 100

DIGITUS® Universal Dual Monitor Stand with Clamp Fastening

Dual Monitor Mount, 2x 45", 2x 20 kg Mechanical Spring, VESA: 75x75, 100x100, Black

Fully mobile table mount for 2 screens up to 45" with a maximum weight capacity of 2x 20 kg - suitable for flat screens as well as curved displays



Technical details

- Maximum monitor size: 45"
- Maximum load: 20 kg
- Mechanical spring with tension adjustment
- VESA compatibility: 75x75, 100x100
- Suitable for flat and curved monitors
- Tilting the monitor: 70° (+50° to -20°)
- Pivoting the monitor: 180° (+90° to -90°)
- Rotating the monitor: 360° (+180° to -180°)
- Full arm extension: 54.5 cm
- Mounting type: Clamp bracket or table feed-through
- Recommended tabletop thickness: Clamp: 10 - 80 mm, table bushing: 10 - 35 mm

DA-90474 | EAN 4016032505921 | Dual Monitor Mount, 2x 45", 2x 20 kg Mechanical Spring, VESA: 75x75, 100x100, black

DIGITUS® Dual Monitor Mount With Clamp Fastening

Dual Monitor Clamp Mount 15-32", 2x 8 kg (max.), black

The desktop mount offers you the option of individually aligning monitors from 15" - 32". Panning, tilting, rotating and height adjustment of the monitor is possible. With quick-release function for easy installation.



Technical details

- Ergonomically perfect monitor position for all body sizes
- For monitors from 15" to 32" (VESA 75 / 100), up to 8 kg (per monitor)
- Monitors can be swiveled, tilted, rotated and height-adjusted
- Easy installation thanks to clamp mounting on the desk
- Quick-release function (quick-release fastener) - enables the monitor to be attached or removed quickly
- Space-saving design with cable management

DA-90400 | EAN 4016032465348 | Dual Monitor Clamp Mount 15-32", 2x 8 kg (max.), black

DIGITUS® Pop-Out Video Monitor Wall Mount, 45-70"

Pop-out Video Wall Mount 45-70" screen size, 70 kg max, anti-theft hole

Pop-out function: Provides quick access for installation and maintenance and allows precise alignment of your video walls



Technical details

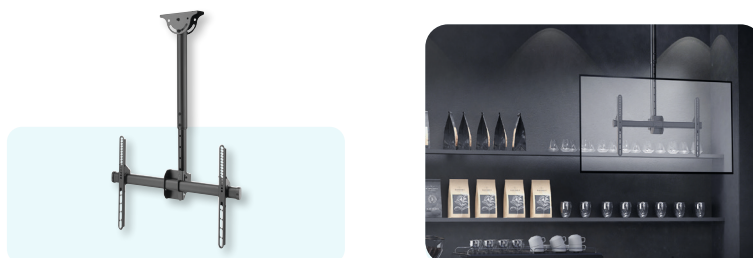
- Pop-out function - Quick access for installation and maintenance
- Supported screen sizes: 45" - 70"
- Maximum load capacity: 70 kg
- Fine adjustment: Depth 20 mm / height 25 mm
- Tilt range: +4° to -2° / Screen level: +3° to -3°
- VESA compatibility: 200x200, 300x200, 300x300, 400x200, 400x300, 400x400, 600x400
- Precise display alignment: Height/depth adjustment
- Quick lock: Locks/unlocks the display
- Pop-out lock system: Ensures safety by preventing the possibility of accidental pop-out
- Anti-theft lock hole: For added security against unintentional removal (additional padlock required)

DA-90446 | EAN 4016032481935 | Pop-out Video Wall Mount 45-70" screen size, 70 kg max, anti-theft hole

DIGITUS® Universal TV Ceiling Mount with Telescopic Height-Adjustment

Monitor/TV Ceiling Mount 37-70", 50 kg max, 560-910 mm, black

Variable Ceiling Bracket for Flat and Curved Displays up to 70" / 50 kg, Height-Adjustable



Technical details

- Universally suitable for displays from 37" to 70"
- Load capacity: 50 kg
- Suitable for flat and curved displays
- Variable telescopic height adjustment (35 cm)
- Adjustable mounting plinth - also suitable for sloping roofs with up to 60° inclination
- Freely selectable inclination from 0° to -25° for optimal viewing angle
- Cable management: Within the tube structure
- Quick-release monitor bracket (suspension device) - for easy installation
- Integrated level for perfect alignment
- Perfect for offices, conference rooms, restaurants/café's, schools or hotels

DA-90421 | EAN 4016032475095 | Monitor/TV Ceiling Mount 37-70", 50 kg max, 560-910 mm, black

DIGITUS® Electrically Height-Adjustable Table Frame 90° L-Shaped, Triple Motor, 2-Step

Electric Height Adjustable Desk Frame, 3-leg height: 120 cm, load: 120 kg, white

Transform your desk into an ergonomic standing/sitting workstation. Electrically height-adjustable, variably extendable and can be installed on the right. With collision protection and memory function for height adjustment.



Technical details

- Maximum load capacity of up to 120 kg
- Flexibly adjustable frame: Cross brace (112 - 165 cm) x longitudinal brace (130 - 180 cm)
- Suitable for table tops: 120 - 180 cm x 140 - 200 cm and a depth of 55 - 100 cm
- The longitudinal strut (3rd leg) can be fitted on the right
- Comfortable and electric height adjustment (without table top): 72 - 120 cm
- Height adjustment control panel with LED display (3 brightness settings) and memory function for 4 height settings
- Collision protection function (G-sensor) with 3 sensitivity levels - detection of obstacles during upward & downward movement
- Auto-stop system - stops the motor in the event of resistance and automatically retracts the frame slightly
- 3 motors for easy and quiet (< 50 dB) height adjustment - Lifting speed 25 mm/sec.

DA-90453 | EAN 4016032487418 | Electric Height Adjustable Desk Frame, 3-leg height: 120 cm, load: 120 kg, white

DIGITUS® Electrically Height-Adjustable Table Frame

Electric Height Adjustable Desk Frame Dual motor, 3-stages, white

Convert your standard desk into an ergonomic standing/sitting workstation



Technical details

- Maximum load capacity of up to 100 kg
- Flexible frame - Suitable for tabletops 110-200 cm wide and 60-100 cm deep
- Convenient electrical height adjustment (without tabletop): 62-127 cm
- Touchscreen with memory function for 4 different height settings as well as height display
- Two motors for fast and quiet (<50 dB) height adjustment - Lifting speed 35 mm/sec.
- Collision protection function (G-sensor) with 3 sensitivity settings - Detection of obstacles during up & down movement
- Auto-Stop system - Stops the motor in case of resistance and automatically retracts the frame slightly
- Child lock / display lock
- Two integrated motors for smooth height adjustment with high load capacity and secure positioning

DA-90433 | EAN 4016032481980 | Electric Height Adjustable Desk Frame Dual motor, 3-stages, white

DIGITUS® Single Monitor Mount 57", 27 kg

Single Monitor Mount, 57", 27 kg Gas Spring, VESA: 75x75, 100x100, White

Fully mobile table mount for screens up to 57" with a maximum weight capacity of 27 kg - suitable for flat screens as well as curved displays



Technical details

- Suitable for flat & curved screens up to 57"
- Heavy-duty construction: offers a maximum load capacity of up to 27 kg
- Space-saving design with integrated cable management
- VESA Quick-Release function (quick-release fastener) - enables quick attachment or removal of the monitor
- Quick-release coupling to connect the two arms for quick & easy installation
- Installation from the top: is installed completely from above on the desk surface
- 2 mounting options: Clamp mounting and table feed-through
- Gas pressure spring with built-in spring tensioning mechanism - for perfect weight adjustment

DA-90476 | EAN 4016032505945 | Single Monitor Mount, 57", 27 kg Gas Spring, VESA: 75x75, 100x100, White



Ergonomically arranged, optimally organised
HOLISTIC WORKPLACE DESIGN

With our comprehensive product range, you can equip entire offices or set up individual workstations for a home office. At DIGITUS®, you will find the right accessories for a modern, helpful and, above all, healthy design for your planned workplace. A well-organized desk is the ideal aid for effective working.



Learn more



DIGITUS® Workstation (Monitor, Keyboard, Mouse) Wall Mount

Workstation (Monitor, Keyboard, Mouse) Wall Mount 32 inch, 8 kg, VESA 75x75/100x100, white/black

Universal mount for installation monitor and keyboard/mouse on the wall with flexible height adjustment



Technical details

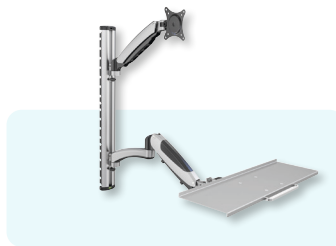
- Monitor arm (gas spring) – 45° inclination, 180° swivel range, VESA mount 360° rotation range
- Monitor arm suited for monitors up to 32" and max. weight of 8 kg (VESA 75x75, 100x100)
- Mount for keyboard & mouse (double hinged arm) - Size: W 60 x D 17.8 cm and handle on the front side
- Double hinged arm with a load capacity of max. 8 kg - Swivel range up to 180°
- Individual height adjustment of both arms on the carrier mount (height 73 cm)
- Integrated cable management
- Easy wall installation using three screws
- High-quality aluminum/steel design

DA-90451 | EAN 4016032486398 | Workstation (Monitor, Keyboard, Mouse) Wall Mount 32 inch, 8 kg, VESA 75x75/100x100, white/black

DIGITUS® Workstation (Monitor, Keyboard, Mouse) Wall Mount

Workstation (Monitor, Keyboard, Mouse) Wall Mount 32 inch, 8 kg, VESA 75x75/100x100, white/black

Universal mount for installation monitor and keyboard/mouse on the wall with flexible height adjustment



Technical details

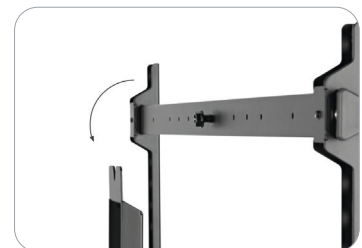
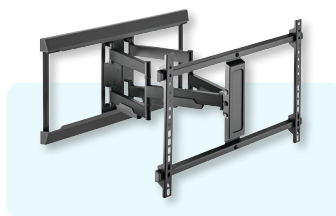
- Monitor arm (gas spring) – 45° inclination, 180° swivel range, VESA mount 360° rotation range
- Monitor arm suited for monitors up to 32" and max. weight of 8 kg (VESA 75x75)
- Mount for keyboard & mouse (double hinged arm) - Size: W 60 x D 17.8 cm and handle on the front side
- Double hinged arm with a load capacity of max. 8 kg - Swivel range up to 180°
- Individual height adjustment of both arms on the carrier mount (height 73 cm)

DA-90354 | EAN 4016032383161 | Workstation (Monitor, Keyboard, Mouse) Wall Mount 32 inch, 8 kg, VESA 75x75/100x100, white/black

DIGITUS® Full Motion TV Wall Bracket (37-80")

Full Motion TV Wall Mount 37-80", 60 kg load max.

Full motion (swivel, tilt, shift) for optimal positioning with high load capacity (60 kg max.) and broad compatibility (displays of 37-80" max.)



Technical details

- Suitable for displays with VESA bracket from 37-80"
- Maximum load capacity: 60 kg
- Extendible (Depth: 6.3 to 53.6 cm)
- Display swivel: +60° to -60°
- Display tilt: +5° to -10°
- Horizontal adjustment (rotation): +3 to -3°
- The arms can be moved individually to the side on the permanently mounted wall carrier plate and locked in the desired position.

DA-90454 | EAN 4016032489191 | Full Motion TV Wall Mount 37-80", 60 kg load max.

DIGITUS® Collaboration Trolley / TV Presentation Cart

TV Cart, 70-120" 140 kg max., black

The collaboration trolley / presentation trolley offers the option for flexible positioning of a display (70-120", 140 kg max.)



Technical details

- Mount for displays from 70-120" with max. load capacity of 140 kg
- Display mount height adjustment: min. 125 cm - max. 160 cm
- Display mount tilt angle: +5° to -10
- Height-adjustable camera mount with max. load of 5 kg
- Height-adjustable shelf for notebook, player, etc. max. load of 10 kg
- Practical handles on the back for quick and easy movement/positioning
- Heavy duty casters with locking mechanism
- Integrated cable management

DA-90452 | EAN 4016032487364 | TV Cart, 70-120" 140 kg max., black

DIGITUS® Ergonomic Workspace Riser

Height Adjustable Sit-Stand desktop 95x61x10-50cm, Lower Keyboard and mouse deck

Height adjustable stand/sit desktop extension



Technical details

- Create your personal ergonomic workspace at low cost
- You are able to raise your workspace between 10 to 50cm
- Lower deck for mouse and keyboard

DA-90380-1 | EAN 4016032433279 | Height Adjustable Sit-Stand desktop 95x61x10-50cm, Lower Keyboard and mouse deck

DIGITUS® TV Cart

TV-Cart for screens up to 70", max. 50kg wheelbase, VESA max. 600x400

For flexible presentations in a meetingroom or education use



Technical details

- Mount a TV between 37" up to 70"
- With lower shelf for DVD Player or Laptops
- With upper shelf for Webcams
- With weehlbase for flexible positioning

DA-90370 | EAN 4016032428589 | TV-Cart for screens up to 70", max. 50kg wheelbase, VESA max. 600x400



DIGITUS® TV presentation cart

TV Cart with shelf 37-70", black

Compact TV cart offers mobile use for TVs up to 70" and maximum weight up to 50 kg



Technical details

- Supported monitor sizes: 37 - 70"
- Maximum load capacity: 50 kg
- Height-adjustable: 4 positions (128.5/134, 139.5, 145 cm) for optimum viewing position
- Free swivel design: easy adjustment forward or backward for better visibility and less glare
- Heavy-duty casters with locking mechanism: can be moved or stopped at will
- Cable management: keeps everything organized
- Practical shelf (40.4 x 25 cm, maximum load capacity: 5 kg) for notebook, player,

DA-90447 | EAN 4016032481850 | TV Cart with shelf 37-70", black

DIGITUS® LED Monitor Light With Clamp Mount

LED Monitor Bar Light 5W, 250lm, clamp, black

LED light with a dimmer, various colour temperatures, touch control and a clamp mount



Technical details

- Adjustable color temperature in 5 levels - from cold to warm (3000-6500K)
- Dimmer with 5 brightness levels - conveniently adjustable via touch control
- Touch control: Simple adjustment of the light setting by touch
- Memory function for last brightness setting
- Simple clamp fastening (up to 45 mm)

DA-90415 | EAN 4016032475033 | LED Monitor Bar Light 5W, 250lm, clamp, black

DIGITUS® Ergonomic Stool / Standing Aid Height-Adjustable with Gas Pressure Spring

Standing Stool, height-adjustable, black

Height-adjustable office stool for more dynamic sitting/standing



Technical details

- Stay fit and mobile even while seated!
- Frameless foam cushion for pleasant seating comfort
- The sturdy base of the chair offers a stable yet flexible sitting/standing experience
- Height adjustment of 63 - 88 cm possible
- Easy height adjustment with gas pressure spring
- Reduces the strain on your legs after long periods of standing
- Seat can be rotated by 360°
- Can be inclined by 30° for dynamic movements
- Maximum load capacity: 125 kg
- Put together in just a few minutes without tools!

DA-90422 | EAN 4016032475279 | Standing Stool, height-adjustable, black

DIGITUS® Universal PC Mount for Desk Mounting With Easy-Locking

PC Table Mount, 10 kg max H: 300-510, D: 88-203mm black

Flexible metal holder for PC housings of all kinds – continuously adjustable without tools



Technical details

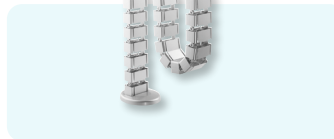
- Easy locking – Secure height adjustment without tools
- Continuously adjustable height and width
- Perfectly adapts to different PC housing sizes
- Can be swiveled by 360° – Easy access to connections on the rear side
- Under-desktop installation: Saves space and facilitates workstation cleaning
- Compatible with many common PC housings
- Sturdy steel construction for excellent durability
- Ideal for home and office

DA-90411 | EAN 4016032474975 | PC Table Mount, 10 kg max H: 300-510, D: 88-203mm black

DIGITUS® Flexible Cable Routing With Adjustable Length

Flexible Cable Routing, Color: silver, Length: 1.3 m

Individually adjustable length with 4 cable channels – suitable for height-adjustable tables



Technical details

- Suitable for normal and height-adjustable tables
- 28 removable links for individual length adjustment
- Flexible side opening for easy entry and exit of the cables
- Adjusts to the height of the respective table
- Pedestal of the guide with metal weight for more stability
- Tidy and flexible cable management
- Multi-link, modular construction
- 4 separate chambers within the cable routing
- Attachment angle for table
- Total length: 130 cm

DA-90506 | EAN 4016032463511 | Flexible Cable Routing, Color: silver, Length: 1.3 m

DIGITUS® Cable Management Channel

Cable management tray, under desk black

Provides space to store cables as well as socket strips – For individual under-desktop mounting



Technical details

- Clean design: Hides cables and power cords for a clean workspace
- Easy installation: Screw mounting under the desk allows for quick installation
- Perfect accessory for height-adjustable desks – Tidies up the workspace while preventing damage to cabling
- Dimensions: W 60 x D 7.6 x H 11.4 cm
- Weight: 1.2 kg

DA-90448 | EAN 4016032481867 | Cable management tray, under desk black

DIGITUS® USB-C Docking Station 7-Port, 1x HDMI

USB-C Docking Station, 7-Port, 1x HDMI 3x USB 3.2 Gen 2, 1x RJ45, 1x SD, 1x MicroSD, 1x PD

Expand your notebook with 7 additional ports - Take advantage of the versatility of numerous connection options and make your working environment more effective



Technical details

- 1x HDMI port (4K/60Hz) - Expand your workstation with an additional external monitor
- 2x USB-A 3.2 Gen 2 port (10 Gbit/s) for ultra-fast data transfer - one port with additional charging function (1.5A) for mobile devices
- Supports HDCP 2.2, HDCP 1.4, HDCP 1.3
- Supports HDR10+
- 1x Gigabit Ethernet connection (RJ45) - connect your notebook to the network via cable
- 2x card reader (SD/MicroSD) - transfer speed of 104 MBps
- 1x USB-C Power Delivery (3.0) port for charging the notebook
- Supports PD 3.0 Fast Role Swap (FRS)
- the connection between the docking station and notebook is not interrupted when the charger is unplugged
- Integrated USB-C connection cable (20 cm) - Flexible connection to the host PC
- Aluminum top cover
- Supports DP 1.4 Alt Mode, backwards compatible with DP 1.2 Alt Mode (DisplayPort Alternate Mode)

DA-70914 | EAN 4016032497738 | USB-C Docking Station, 7-Port, 1x HDMI 3x USB 3.2 Gen 2, 1x RJ45, 1x SD, 1x MicroSD, 1x PD

DIGITUS® USB-C Docking Station 8-Port

USB-C Docking Station, 8-Port 2xHDMI, 3xUSB3.0, 1xRJ45, 1xSD, 1xMicroSD, 1xUSB-CPD

Expand your notebook with 8 additional ports - Optimize your workstation environment by using external monitors, additional peripherals and much more.



Technical details

- 2x HDMI port (4K/60Hz) - Expand your workstation with two external monitors
- Supports dual monitor with 2x 4K/60Hz in MST mode (expand screen) - Windows, ChromeOS, Linux
- Supports dual monitor with 2x 4K/60Hz in SST mode (screen mirroring) - Windows, macOS, iOS, iPadOS, Android, ChromeOS, Linux
- 2x USB-A 3.2 Gen 2 port (10 Gbit/s) for ultra-fast data transfer - one port with additional charging function (1.5A) for mobile devices
- 1x Gigabit Ethernet connection (RJ45) - connect your notebook to the network via cable
- 2x card reader (SD/MicroSD) - transfer speed of 104 MBps
- 1x USB-C Power Delivery (3.0) port for charging the notebook
- Supports PD 3.0 Fast Role Swap (FRS) - the connection between the docking station and notebook is not interrupted when the charger is unplugged
- Integrated USB-C connection cable (20 cm) - Flexible connection to the host PC

DA-70915 | EAN 4016032497745 | USB-C Docking Station, 8-Port 2xHDMI, 3xUSB3.0, 1xRJ45, 1xSD, 1xMicroSD, 1xUSB-CPD

DIGITUS® USB-C Travel Docking Station 7-Port

3x USB 3.2 Gen 1, 1x RJ45, 1x SD, 1x MicroSD, 1x PD

Expand your notebook with 7 additional ports - whether on the move or stationary



Technical details

- 1x HDMI port (4K/60Hz) - Expand your workstation with an additional external monitor
- 2x USB-A 3.2 Gen 1 port (5 Gbit/s) for fast data transfer - one port with additional charging function (1.5A) for mobile devices
- 1x Gigabit Ethernet connection (RJ45) - connect your notebook to the network via cable
- 2x card reader (SD/MicroSD) - transfer speed of 104 MBps
- 1x USB-C Power Delivery (3.0) - connection for charging the notebook
- Supports PD 3.0 Fast Role Swap (FRS) - the connection between the docking station and notebook is not interrupted when the charger is unplugged
- Stowable USB-C connection cable (10 cm) - Practical connection to the host PC
- Supports HDCP 2.2, HDCP 1.4

DA-70916 | EAN 4016032497752 | USB-C Travel Docking Station, 7-Port, 1x HDMI 2x USB 3.2 Gen 1, 1x RJ45, 1x SD, 1x MicroSD, 1x PD

DIGITUS® USB-C Docking Station 11-port

2x USB-A, 1x USB-C, 1x RJ45, 1x DC, 1x Audio

Our docking station offers an ideal solution for office applications – expand your notebook connections and benefit from the triple monitor function, fast data transfer and a wide range of connection options



Technical details

- 2x HDMI port + 1x DP port (4K/60Hz) – Extend your workstation to up to 3 external monitors
- Supports dual monitor (2x 4K/60Hz) & triple monitor (1x 4K/60Hz + 2x 4K/30Hz) in MST mode (expand screen) – Windows, ChromeOS, Linux
- Supports dual monitor (2x 4K/60Hz) & triple monitor (3x 4K/60Hz) in SST mode (screen mirroring) – All common operating systems
- 2x USB-A 3.2 Gen 2 (10 Gbit/s) connection for ultra-fast data transfer – one port with additional charging function (1.5A) for mobile devices
- 1x USB-C 3.2 Gen 2 (10 Gbit/s) port for ultra-fast data transfer and with additional charging function (1.5A) for mobile devices
- 1x Gigabit Ethernet connection (RJ45) – connect your notebook to the network via cable

DA-70917 | EAN 4016032497769 | USB-C Docking Station, 11-Port, 2x HDMI, 1x DP 2x USB-A, 1x USB-C, 1x RJ45, 1x DC, 1x Audio

DIGITUS® USB-C Docking Station 13-port

USB-C Docking Station, 13-Port, 3x HDMI, 2x DP
4x USB-A, 1x USB-C, 1x RJ45, 1x DC, 1x Audio

Our 13-port USB-C docking station expands the connection options for notebooks and offers a complete solution for the entire workplace



Technical details

- 3x HDMI + 2x DP (4K/60Hz) – Expand your workstation to up to 3 external monitors with a choice of 5 video connections
- Supports dual monitor (2x 4K/60Hz) & triple monitor (3x 4K/60Hz) in MST mode (expand screen) – Windows, macOS, ChromeOS, Linux
- Supports Dual Monitor & Triple Monitor (MST – extend screen) – also with Apple computers with M1, M2, M3 chipset
- Supports dual monitor (2x 4K/60Hz) & triple monitor (3x 4K/60Hz) in SST mode (screen mirroring) – All common operating systems
- 3x USB-A 3.2 Gen 1 (5 Gbit/s) for fast data transfer – one port with additional charging function (1.5A) for mobile devices
- 1x USB-A 3.2 Gen 2 + 1x USB-C 3.2 Gen 2 (10 Gbit/s each) for ultra-fast data transfer and with additional charging function (1.5A) for mobile devices

DA-70918 | EAN 4016032497776 | USB-C Docking Station, 13-Port, 3x HDMI, 2x DP 4x USB-A, 1x USB-C, 1x RJ45, 1x DC, 1x Audio

DIGITUS® USB-C 8K Docking Station 12-Port

USB-C 8K Docking Station, 12-Port 2x HDMI, 1x DP, 3x USB-A, 1x USB-C, 1x RJ45, 1x PD

Optimally equipped: The DIGITUS® USB-C 8K Docking Station offers maximum image quality and numerous connections for a sophisticated setup



Technische Details

- 2x HDMI port + 1x DP port (8K/30Hz) – Expand your workstation with up to 3 external monitors
- Supports dual monitor (2x 4K/60Hz) & triple monitor (1x 4K/60Hz + 2x 4K/30Hz) in MST mode (Multi Stream Transport / extend screen) – Windows, ChromeOS
- 2x USB-A 3.2 Gen 2 (10 Gbit/s) connection for ultra-fast data transfer – one port with additional charging function (1.5A) for mobile devices
- 1x USB-A 3.2 Gen 1 (5Gbit/s) port for fast data transfer
- 1x USB-C 3.2 Gen 2 (10 Gbit/s) port for ultra-fast data transfer and charging function (1.5A) for mobile devices
- 1x Gigabit Ethernet connection 10/100/1000 Mbit/s (RJ45) – connection of your notebook to the network via cable
- 2x card reader (SD/MicroSD) – transfer speed of 104 MBps
- 1x 3.5 mm audio jack
- 1x USB-C Power Delivery (3.0) port for charging the notebook

DA-70919 | EAN 4016032502098 | USB-C 8K Docking Station, 12-Port 2x HDMI, 1x DP, 3x USB-A, 1x USB-C, 1x RJ45, 1x PD

DIGITUS® USB 2.0 Serial Adapter

USB 2.0 to serial Converter, DSUB 9M incl.
USB A Cable 80cm, FTDI chipset

Provides a serial RS232 interface via USB2.0



Technical details

- Serial RS232 interface via USB 2.0: Enables the connection of devices with RS232 interface to modern computers via USB
- USB 2.0 standard compliance: Full support of the USB 2.0 standard for fast and reliable data transfer
- Backwards compatible with USB

DA-70156 | EAN 4016032271611 | USB 2.0 to serial Converter, DSUB 9M incl. USB A Cable 80cm, FTDI chipset

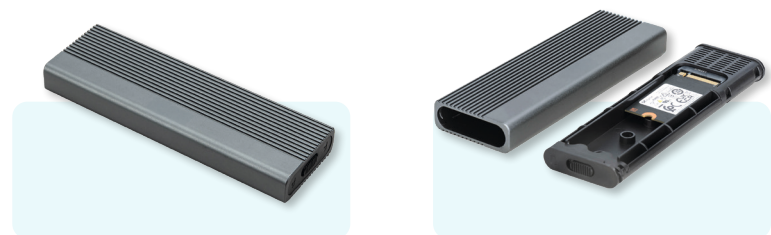
DA-70155-1 | EAN 4016032326144 | USB to Serial Adapter, RS232 USB1.1, RS232 chipset PL2303GT

DA-70159 | EAN 4016032308539 | USB to Serial Adapter, RS232 4 x RS232, cable type, Chipset: FT4232H, 1.5m

DIGITUS® USB M.2 Hard Disk Enclosure, SSD, External, SATA, 6Gbps, USB 3.1 Gen2 Aluminum, Tool-Free

USB hard disk enclosure, external, SATA 6Gbps, USB 3.1 Gen2, aluminum, toolfree

The DA-71154 M.2 SATA SSD enclosure will become your preferred solution for high capacity and high speed storage. This elegant, tool-less enclosure supports mini SSDs in M.2 B key format.



Technical details

- Wide compatibility: Supports M.2 modules in 2230, 2242, 2260 and 2280 formats, compatible with a wide range of SSDs.
- High capacity: Offers up to 8 TB of storage space for all your files and data.
- Fast data transfer: Data transfer rate of 6 Gbit/s for fast file transfers and smooth performance.
- USB 3.1 Gen 2 interface: Latest USB technology with backwards compatibility to USB 3.1, 3.0, 2.0 and 1.1.
- Plug and play: Simply connect via USB and get started straight away.
- Cross-platform support: Compatible with Windows, macOS, Linux, Google Chrome OS, Android and iOS.
- Robust chipset: JMS576B chipset for reliable and efficient performance.
- LED activity indicator: Integrated LED indicator for monitoring the status of your SSD

DA-71154 | EAN 4016032497554 | USB hard disk enclosure, external, SATA 6Gbps, USB 3.1 Gen2, aluminum, toolfree

DA-71156 | EAN 4016032497561 | USB hard disk enclosure, external, NVMe + SATA 10Gbps(NVMe) 6 Gbps (SATA),USB3.1 Gen2,alu,toolfree

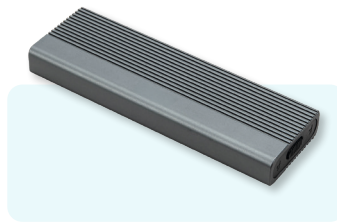




DIGITUS® USB M.2 hard disk enclosure SSD, extern, NVMe, 10Gbps, USB 3.1 Gen2, Aluminum, Tool-Free

**USB hard disk enclosure, external, NVMe 10Gbps
USB3.1 Gen2, alu, toolfree**

The DA-71120-1 M.2 NVMe SSD enclosure will become your preferred solution for high capacity, high speed storage. This elegant, tool-less enclosure supports mini SSDs in M.2 B+M key format.



Technical details

- Wide compatibility: Supports M.2 modules in 2230, 2242, 2260 and 2280 formats, compatible with a wide range of SSDs.
- High capacity: Offers up to 8 TB of storage space for all your files and data.
- Fast data transfer: Data transfer rate of 10 Gbps for fast file transfers and smooth performance.
- USB 3.1 Gen 2 interface: Latest USB technology with backwards compatibility to USB 3.1, 3.0, 2.0 and 1.1.
- Plug and play: Simply connect via USB and get started straight away.
- Cross-platform support: Compatible with Windows, macOS, Linux, Google Chrome OS, Android and iOS.
- Robust chipset: JMS583 chipset for reliable and efficient NVMe performance.
- LED activity indicator: Integrated LED indicator for monitoring the status of your SSD.

DA-71120-1 | EAN 4016032497578 | USB hard disk enclosure, external, NVMe 10Gbps ,USB3.1 Gen2,alu,toolfree

DIGITUS® HDMI Graphic-Adapter

**USB-A 3.2 Gen 1 to HDMI Graphic Adapter 1x
HDMI, FullHD 1080p, Black**

Expand your workplace; connect an additional monitor, TV or projector via the USB interface.



Technical details

- 1x USB-A 3.2 Gen 1 - connection to the host
- 1x HDMI connection - Full HD video resolution up to 1080p
- Supports dual display (expand screen / mirror screen)
- Adding or removing the monitor without restarting the system
- Up to 2 graphics adapters can be used simultaneously for PC
- Automatic continuation from idle or standby mode
- Integrated driver - Easy installation

DA-70841 | EAN 4016032390718 | USB-A 3.2 Gen 1 to HDMI Graphic Adapter 1x HDMI, FullHD 1080p, Black

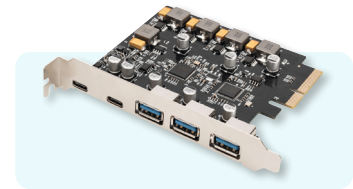
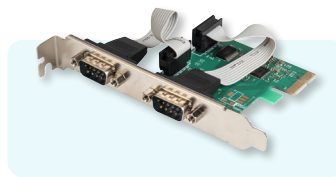
DA-70852 | EAN 4016032447528 | USB-C 3.2 Gen 1 to HDMI Graphic Adapter 1x HDMI, 4K/60Hz, Black

DIGITUS® 2-Port Serial Interface Card

PCIe

Serial I/O RS232 PCI Express Add-On card
2-port, incl. low profile, chipset: ASIX99100

Perfect for connecting serial modems, PDAs,
digital cameras, printers, ISDN terminal
adapters and many more



Technical details

- 2 x DSUB 9, serial ports, male, UART 16C950
- Chipset: AX99100
- Data transfer rate up to 1,5 Mbps
- Compliant with PCI Express base specification 2.0

DS-30000-1 | EAN 4016032309390 | Serial I/O RS232 PCI Express Add-On card 2-port, incl. low profile, chipset: ASIX99100

DS-30222 | EAN 4016032485810 | PCIe card 2x USB-C + 3x USB A 5x SuperSpeed 10Gbps

DIGITUS® Precision Mechanic Screwdriver Set, 57-Piece

Precision Screwdriver Set 57 pcs. for mobile phone,
laptop PC, watches, glasses, console

57-part screwdriver set for precision mechanics and
repair of mobile phones, camera, watches, glasses or
notebooks etc.



Technical details

- Can be used to repair smartphones, tablets, gaming consoles, PCs, cameras, watches, glasses, etc.
- The bits are made of chromium-vanadium steel (CR-V)
- The screwdriver bits made of chromium-vanadium steel with a hardness of 55-60 HRC guarantee good quality assurance and usability.
- The set is processed precisely and equally suited for precision mechanics as well as ambitious amateur mechanics.
- 57 parts for a wide variety of precision mechanics applications. With its cassette filled on both sides, the set is compact and yet orderly.

DA-70360 | EAN 4016032486350 | Precision Screwdriver Set 57 pcs. for mobile phone, laptop PC, watches, glasses, console



DIGITUS® Precision Mechanic Screwdriver Set, 115-piece

Precision Screwdriver Set 115 pcs. for mobile phone, laptop PC, watches, glasses, console

115-part screwdriver set for precision mechanics and repair of mobile phones, camera, watches, glasses or notebooks etc.



Technical details

- This screwdriver set features clever details, for example the bit holder can be pulled out in three stages to provide access to hard-to-reach screws
- Can be used to repair smartphones, tablets, gaming consoles, PCs, cameras, watches, glasses, etc.
- The bits are made of chromium-vanadium steel (CR-V), scraper and lifting tools are made of plastic
- The screwdriver bits made of chromium-vanadium steel with a hardness of 55-60 HRC guarantee good quality assurance and usability.
- The set is processed precisely and equally suited for precision mechanics as well as ambitious amateur mechanics.
- 115 parts for a wide variety of precision mechanics applications. With its cassette filled on both sides, the set is compact and yet orderly.

DA-70361 | EAN 4016032486367 | Precision Screwdriver Set 115 pcs. for mobile phone, laptop PC, watches, glasses, console

DIGITUS® USB Charger 20W 1x USB-C, 1x USB-A

USB Charger, 20W 1x USB-C, 1x USB-A, White

20 W power for fast, safe charging of two devices simultaneously - compact, efficient and ideal for at home and on the go.



Technical details

- Compact design, efficient and safe
- Sustainable: 98% recycled material in the plastic housing and 100% plastic-free packaging
- Universally compatible: tablets, smartphones or other USB devices
- 1x USB-C connection - 20 watts max.
- 1x USB-A connection - 18 watts max.
- Simultaneous use: USB-C + USB-A - 15 watts max.

DA-10300 | EAN 4016032505808 | USB Charger, 20W 1x USB-C, 1x USB-A, White



DIGITUS® USB GaN Charger USB-C, USB-A

USB GaN Charger, 30W, 45W, 67W, 100W
140W, Weiss

The powerful GaN II charger with practical holder and four ports charges laptops, tablets, and smartphones simultaneously—the ideal solution for workplaces with high energy requirements.



Technical details

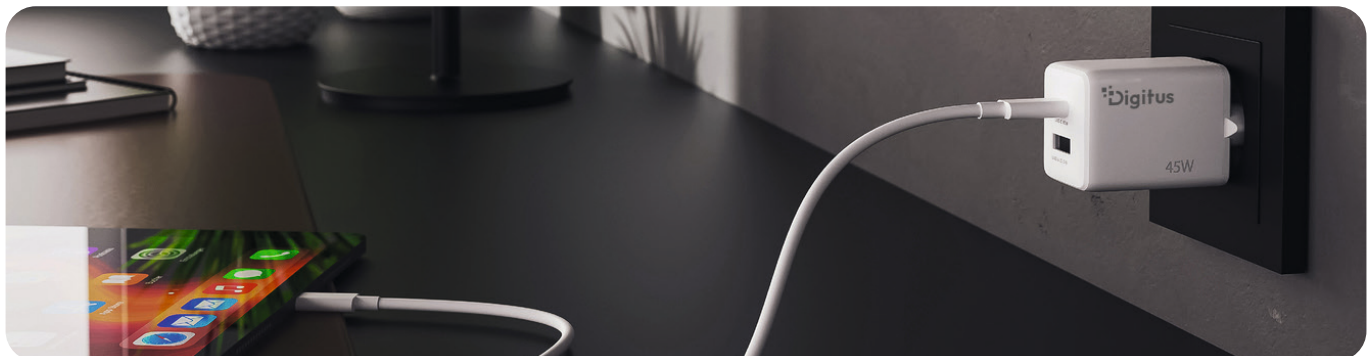
- Modern GaN II technology: compact design, efficient and safe
- Sustainable: 98% recycled material in the plastic housing and 100% plastic-free packaging
- Universally compatible: tablets, smartphones or other USB devices
- 1x USB-C connection - 30 watts max.
- 1x USB-A connection - 18 watts max.
- Simultaneous use: USB-C + USB-A - 15 watts max.

DA-10301 | EAN 4016032505815 | USB GaN Charger, 30W 1x USB-C, 1x USB-A, White

DA-10302 | EAN 4016032505822 | USB GaN Charger, 45W 1x USB-C, 1x USB-A, White

DA-10303 | EAN 4016032505839 | USB GaN Charger, 67W 2x USB-C, 1x USB-A, White

DA-10304 | EAN 4016032505846 | USB GaN Charger, 100W 2x USB-C, 1x USB-A, White



DIGITUS® 2D Barcode Hand Scanner Battery-Operated, Bluetooth & QR-Code Compatible

2D Bluetooth Barcode Scanner 200 scan/
sec, with holder

High-resolution hand scanner for reliable use in retail and logistics – compatible with Bluetooth and suitable for QR codes



Technical details

- Precise scanning of 1D & 2D barcodes (barcodes / QR codes)
- Supports wireless connection via Bluetooth or cabled via USB
- Anti-inference: External light sources have no influence on the scan
- Reads barcodes on screens – ideal for payment via smartphone/QR code
- Automatic mode enables highly efficient operation
- 200 scans per second, bidirectional for reliable detection

DA-81003 | EAN 4016032473657 | Barcode Hand Scanner, Battery-Operated, Bluetooth & QR-Code Compatible

DA-81002 | EAN 4016032473640 | 2D Barcode Handscanner, QR-Code kompatibel

DA-81001 | EAN 4016032473633 | 1D Barcode Handscanner

DIGITUS® 1D 2D Desktop USB Barcode Scanner Scanner, QR-Code Compatible

1D 2D Barcode Scanner Desktop

Omni-directional bar code scanner with a scanning performance of up to 200 scans/s and elegant design for reliable use in checkout areas of pharmacies, supermarkets and other retail facilities



Technical details

- Precise scanning of high-resolution 1D & 2D barcodes (barcodes / QR codes)
- 200 scans/s, bidirectional for reliable detection, successful code detection is confirmed by a light and audio signal.
- Reads barcodes on screens - ideal for payment via smartphone / QR code (e.g. e-wallet)
- Ideal for trade, logistics and commerce of all kinds
- Plug and Play - No additional drivers required
- Anti Inference: External light sources have no influence on the scan.
- The integrated infrared sensor automatically activates the scanner when a barcode is held in the scanning area.

DA-81005 | EAN 4016032490630 | 1D 2D Barcode Scanner Desktop

DIGITUS® USB 3.0 Office Hub, 7-Port

USB 3.0 Hub, 7-port Incl. 5V/3,5A power supply, Aluminium housing

Adds seven additional SuperSpeed ports to your workspace



Technical details

- Seven USB 3.0 connections
- Supports data transfer rate up to 5 Gbps (Super-speed)
- 5 V/3.5A power supply unit (USB 2.0 micro, type B)
- Cable length: 1m
- Downward compatible with USB 2.0 and 1.1

DA-70241-1 | EAN 4016032447474 | USB 3.0 Hub, 7-port Incl. 5V/3,5A power supply, Aluminium housing

DA-70240-1 | EAN 4016032444244 | USB 3.0 Hub, 4-port Incl. 5V/2A power supply, Aluminium housing

DIGITUS® USB 3.0 Hub 4-Port, Slim Line

USB 3.0 Hub 4-Port, Slimline with USB-C Adapter, 5Gbps, 0,2m cable

Expands your notebook with USB-C or USB A connection with 4 additional USB super-speed ports.



Technical details

- Additionally 4x USB A 3.0 with up to 5Gbps to a USB A or USB-C port
- USB-C 3.0 and USB A 3.0 HUB, the combination of USB-A and USB-C is designed in order that the HUB is compatible with a wide range of notebooks.
- The USB hub provides up to four additional connection options for external hard drives, SSDs or other USB devices on your PC, notebook or tablet.
- Thanks to the Super-Speed USB 3.0 standard, fast data transfer rates of up to 5 Gbps are possible - USB 2.0 & USB 1.1 are also supported thanks to its backward compatibility.
- The integrated USB-C connection makes it possible to provide the USB HUB with additional power (Charging cable/ adapter not included)
- Compatible with many operating systems e.g. macOS, Windows and Google Chrome OS

DA-70235 | EAN 4016032489207 | USB 3.0 Hub 4-Port, Slimline with USB-C Adapter, 5Gbps, 0,2m cable

DA-70236 | EAN 4016032489214 | USB 3.0 Hub 4-Port, Slim Line

DIGITUS® USB-C HUB, 4-Port 2x USB A + 2x USB-C

USB-C 4 Port HUB 2x USB-A + 2x USB-C Gen2

Extends your notebook with USB-C port by an additional 2x USB 3.0 and 2x USB-C ports



Technical details

- 2x USB A 3.1 Gen2 with up to 10 Gbps
- 2x USB-C 3.1 Gen2 with up to 10 Gbps
- Chipset: GL3590
- Material: Aluminum
- USB A Battery Charging (BC): 1.2
- Data transfer rate: up to 10 Gbps
- Compatible with macOS X, Windows 7, 8, 10, 11, Google Chrome OS
- Cable length: 15 cm
- Number of ports: 4
- USB Standard: USB 3.1 / 3.2
- USB-A (3.0) connections: 2

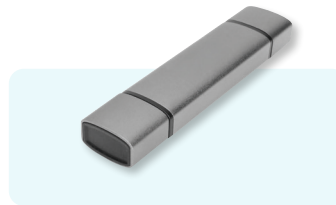
DA-70245 | EAN 4016032485766 | USB-C 4 Port HUB 2x USB-A + 2x USB-C Gen2

DA-70246 | EAN 4016032485773 | USB-C 4 Port HUB 4x USB-C 3.1 Gen1, 5Gbps

DIGITUS® Dual Card Reader Hub USB-C™ / USB 3.0, OTG

Combo Card Reader Hub (USB-C+USB 3.0)
1x SD, 1x MicroSD, 1x USB 3.0, grey

Simple connectivity of memory cards and USB sticks with your smartphone or tablet - USB-C™ & USB A



Technical details

- Direct data backup from your smartphone / tablet without the need for a buffer
- USB port and card reader can be used in parallel
- It is possible to copy and move between USB A device and memory card
- Can connect to your notebook, tablet or smartphone via USB-C™ or USB A
- Plug and Play - no driver installation required
- Perfect for on the go
- Compact aluminum housing with protective caps for the ports

DA-70886 | EAN 4016032464464 | Combo Card Reader Hub (USB-C+USB 3.0) 1x SD, 1x MicroSD, 1x USB 3.0, grey

DA-70330-1 | EAN 4016032431497 | USB 3.0 Card Reader with 1m USB A connection cable Support MS/SD/SDHC/MiniSD/M2/CF cards



AUDIO & VIDEO SOLUTIONS FOR DIGITAL CONFERENCES

Efficient transmission of video and audio signals



Learn more



DIGITUS® USB Telephone Handset

USB telephone handset USB A male-RJ10, cable length: 1.80-1.90m

Comfortable internet telephony without headset or microphone



Technical details

- Can be used as a microphone/speaker with all PC based softphones, such as Skype, Google Chat, Google+, MSN, ICQ, X-lite, Dialpad, MediaRing, Net2phone, etc.
- Power supply via USB, no external power supply required

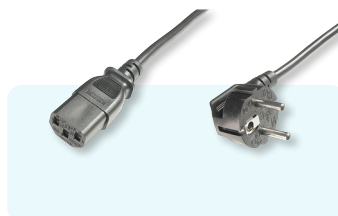
DA-70772 | EAN 4016032185222 | USB telephone handset USB A male-RJ10, cable length: 1.80-1.90m

DIGITUS® Mains Cable

Power Cord, CEE 7/7 (Type F) 90° angled - C13 M/F, 1.8m, H05VV-F3G 0.75qmm, black

Lengths: 1.8 m; 2.5 m; 5m

European country approvals



Technical details

- VDE tested

AK-440100-XXX-S | Power Cord, CEE 7/7 (Type F) 90° angled - C13 M/F, 1.8m, H05VV-F3G 0.75qmm, black

DIGITUS® Socket Strip With 2x USB Ports

4-way Office Power Strip with 2x USB On/Off Switch, Alu-housing, USB out: 5V/2A, bl/si

4-way socket strip with two additional USB charging connectors for mobile devices in a high quality aluminum casing



Technical details

- 4x safety sockets in a 45° layout, also suitable for right angle plugs
- 2x USB ports for charging mobile devices (5 V / 2 A)
- 2x universal clamp mountings for different table thicknesses
- Illuminated safety switch for switching on and off
- Protection against accidental contact: Plastic covers close the contacts on the socket


DA-70614 | EAN 4016032443216 | 4-way Office Power Strip with 2x USB On/Off Switch, Alu-housing, USB out: 5V/2A, bl/si

DA-70624 | EAN 4016032487012 | 6-way Office power strip 3x USB 2xUSB-A +1xUSB A, On/off switch, Alu-housing

DA-70625 | EAN 4016032502081 | 3-Way Desk Power Socket, Black 3x Socket,2x USB-A, 1xUSB-C,3680W,12W,30W, 1.5m

DA-70626 | EAN 4016032502074 | 3-Way Desk Power Socket, White 3x Socket,2x USB-A,1xUSB-C,3680W,12W,30W, 1.5m





CUSTOMISED WORKSTATIONS FOR YOUR NEEDS

Ergonomics in all its diversity -
The right solution for every area

Learn more



DISCOVER OUR SOLUTIONS

