

# INNOVATIVE FTTH SOLUTIONS

EN

BUILDING DISTRIBUTION UNIT  
▪ SUBSCRIBER CONNECTION UNIT ▪ FIBER-OPTIC CABLE  
SPLICE CLOSURES & ACCESSORIES



## FTTH INFRASTRUCTURE SOLUTIONS

### FIBER OPTIC DIRECTLY TO THE HOME

The requirements for extending the fiber optic network into the home or office are constantly growing. The increased demand for working from home and the use of streaming services are current examples of the rapid increase in data traffic in the private sphere.

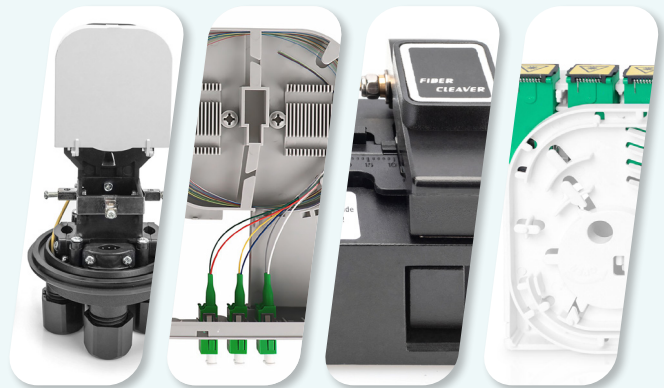
In order to meet these conditions, products are needed that enable simple and efficient installation of fiber optic networks.

With its new FTTH solutions, DIGITUS® offers the perfect equipment for your network technology, making it easy to expand and complete the network in your home or office. The range includes fiber optic cables in various lengths, house distribution units, subscriber distributors, splice closures and other FTTH accessories for the simple installation of a fiber optic network in the home or office.

#### FTTH cables for simple installation

DIGITUS® offers various accessories to make fiber optic installation in the home as easy as possible.

Fiber optic field connectors and special tools, such as fiber optic fiber separators, stripping tools or Kevlar scissors, enable fast and uncomplicated connection of optical fibers directly on site.



## Discover OUR STRUCTURED BUILDING CABLING



Learn more



DIGITUS®  
**PRODUCT OVERVIEW**



**DIGITUS®  
FIBER OPTIC SPLICE CLOSURE**

Splice closures are highly secure devices that support the distribution, splicing and storage of fiber optic cables outside the building. They are used to provide space and protection for spliced cables.

**DN-941091 | Page 9**



**DIGITUS®  
FTTX INSTALLATION KIT**

Wall sockets offer the possibility of easily extending and completing the fiber optic network within the home. They can be installed at a specific point for connecting fiber optic cables to the subscriber.

**DN-948050-2 | Page 7**



**DIGITUS®  
FTTH/FTTB DISTRIBUTION BOX**

The pre-assembled fiber optic distribution box is a special enclosure designed for the management, termination, and distribution of fiber optic cables and is particularly suitable for smaller applications with up to 12 fiber optic connections.

**DN-968913-LCA | Page 4**



**DIGITUS®  
FTTH DROP CABLE**

The Digitus cable offers the possibility of easily extending and completing the fiber optic network in the home. The cable is designed for use as a connecting cable between the building distributor and the floor distributor or subscriber termination point at network level 4.

**DK-3904LCA-30-1 | Page 10**



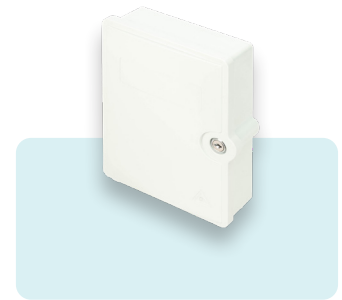
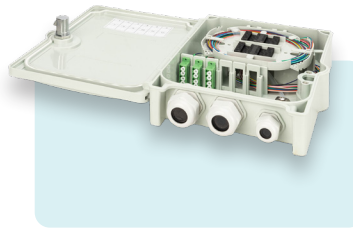


# DIGITUS® DISTRIBUTION BOX

## DIGITUS® FTTH/FTTB Distribution Box Assembled, OS2, 12 fibers, LC/APC

### FTTH Distribution Box, Singlemode, LC-APC Pre-assembled Couplers, Pigtails

The fiber optic distribution box is a robust, organized and pre-assembled solution that simplifies the installation of fiber optic networks. It enables installers to connect homes and businesses to reliable high-speed networks quickly and efficiently.



#### Technical details

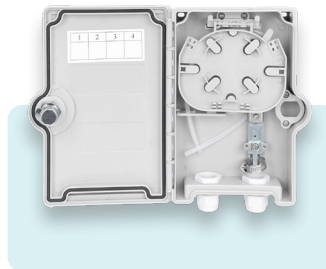
- Fiber distribution box for 12 crimp splices, ready to splice
- Including pigtails, splice holders and adapters
- 1x 12-color LC/APC pigtail set OS2 G657. A1, LSZH, 0.9 mm
- 3x LC/APC quad adapter with ceramic sleeve, pre-assembled
- Two crimp splice protection holders 40 mm
- Hinged splice cassette, scalable up to max. 24 pigtails
- 1x cable entry PG13.5, 2x cable outlet PG21
- Lockable ABS housing with lid and 2 keys
- Suitable for indoor and outdoor applications, protection class IP65

DN-968913-LCA | EAN 4016032498544 | FTTH Distribution Box, Singlemode, LC-APC Pre-assembled Couplers, Pigtails

## DIGITUS® FTTH Outdoor Distribution Box For 2 SC/SX or LC/DX couplers

### Outdoor FTTH Box, IP65 for 2x SC/SX adapters or 2x LC/DX

FTTH Distribution Box for Outdoor IP 65; entry for 2 SC Simplex Adapter or 2 LC Duplex Adapter and 4 splices possible; size: 215 x 150 x 50 mm



#### Technical details

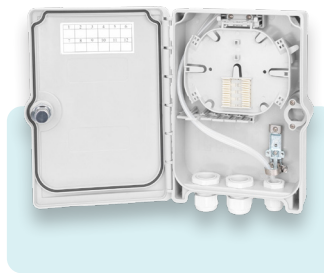
- Mounting bracket for 2 SC simplex or 2 LC duplex connectors
- Splice cassette for 2 splices
- Lockable
- Excess cable can be wound up 2 cable entries (PG 21)
- Mounting hardware
- Splice protection
- Crimp and heat-shrink tube splice holders
- IP 65

DN-968912 | EAN 4016032370994 | Outdoor FTTH Box, IP65 for 2x SC/SX adapters or 2x LC/DX

## DIGITUS® FTTH Outdoor Distribution Box For 6 SC/DX

Outdoor FTTH Box for 6x SC/DX adapter, IP65

FTTH Outdoor Distribution Box IP 65  
for 6 SC Duplex Adapter



### Technical details

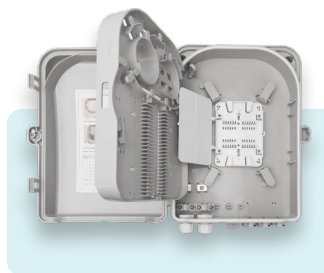
- Mounting bracket for 6 SC duplex connectors
- Splice cassette for 12 splices
- Lockable
- Excess cable can be wound up
- 2 cable entry ports (PG 21)
- 1 cable entry port (PG 13.5 mm)
- Mounting hardware
- IP 65
- Splice protection
- Crimp and heat-shrink tube splice holders

DN-968913 | EAN 4016032371007 | Outdoor FTTH Box for 6x SC/DX adapter, IP65

## DIGITUS® Outdoor Distribution Box For 24 LC/Duplex, SC/ Simplex couplers

Outdoor FTTH Distribution Box for 24 SC/SX or LC/DX adapters and 24 splices

The FTTH box is suitable for outdoor installation. An internal holder for 24x LC (DX) or SC (SX) couplers is used for fiber optic distribution. An overlength tray for pigtails and various cable inlets ensure the best possible cabling options.



### Technical details

- Mounting bracket for 6 SC duplex connectors
- Splice cassette for 12 splices
- Lockable
- Excess cable can be wound up
- 2 cable entry ports (PG 21)
- 1 cable entry port (PG 13.5 mm)
- Mounting hardware | Kabeleingang PG 13,5 mm
- IP 65
- Splice protection
- Crimp and heat-shrink tube splice holders

DN-968911 | EAN 4016032370987 | Outdoor FTTH Distribution Box for 24 SC/SX or LC/DX adapters and 24 splices

DN-968914 | EAN 4016032371014 | Outdoor FTTH Box for 16 cores and 16x LC/DX or 16x SC/SX

**SEE HOW TO DO IT!**  
JUST SCAN THE QR CODE  
OR VISIT OUR  
YOUTUBE CHANNEL!

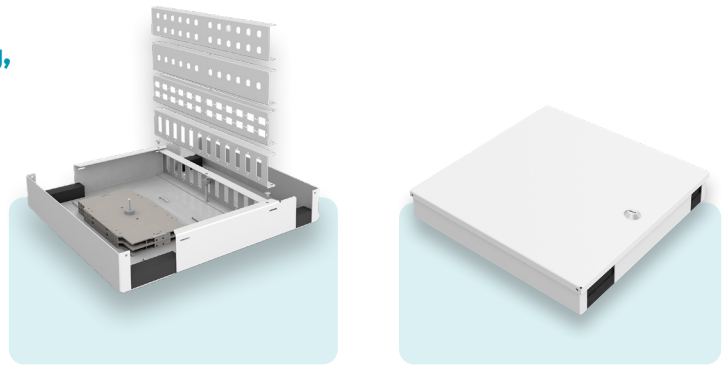


Learn more

## DIGITUS® Fiber Optic Unibox for wall mounting, Medium

FO wall mounting Unibox Medium 280 x 320 x 54 mm, grey (RAL 7035)

Compact splice box for wall mounting



### Technical details

- For up to 48 fibers
- Cable input or output on the top and bottom side with foam rubber strips
- Lockable (incl. 2x keys)
- Sturdy cold-rolled sheet steel
- Optional mounting of up to 4 splice cassettes
- Integrated mounting fixtures for cable ties
- Various adapter plates available for couplings
- Mounting material included (4x dowels, screws, washers, cable ties)

DN-96800M-2 | EAN 4016032466130 | FO wall mounting Unibox Medium 280 x 320 x 54 mm, grey (RAL 7035)

# FIBER OPTICS: THE CONNECTION FOR THE FUTURE!

Unlimited internet connection performance



**ISDN**  
up to  
0,06 Mbit/s

switched off since 2022



**DSL**  
up to  
16 Mbit/s

slow up- & download



**VDSL**  
up to  
250 Mbit/s

improved up- & download



**FIBER OPTIC**  
up to  
**1.000 Mbit/s**

- ✓ always full bandwidth
- ✓ stable performance
- ✓ less susceptible to interference
- ✓ signal right into the residential unit

# DIGITUS® FIBER OPTIC SUBSCRIBER TERMINATION



## DIGITUS® FTTH installation kit, pre-assembled 4-fiber, LC/APC connector, length 30 m

**FTTH - Installation Kit, 4-Core, LC connector 30 m, APC, NE4**

The compact FTTH kit with pre-assembled fiber optic installation cable on one side is ideal for installing high-speed fiber optic connections within the home for network level 4.



### Technical details

- FTTH junction box :
- Suitable for wall and DIN rail mounting
- 2x LC-APC duplex fiber optic coupler with shutter
- The shutter of the clutch protects against lasers and dust
- Adapter type : LC/APC Duplex
- Number of ports: 4
- Number of equipped ports: 2
- Integrated splice cassette
- Dimensions (H\*W\*D) : 80 x 80 x 28 mm

DN-948015-2 | EAN 4016032510079 | FTTH - Installation Kit, 4-Core, LC connector 15 m, APC, NE4, Lengths 15 m

DN-948030-2 | EAN 4016032508809 | FTTH - Installation Kit, 4-Core, LC connector 30 m, APC, NE4, Lengths 30 m

DN-948050-2 | EAN 4016032508816 | FTTH - Installation Kit, 4-Core, LC connector 50 m, APC, NE4, Lengths 50 m

DN-948070-2 | EAN 4016032508823 | FTTH - Installation Kit, 4-Core, LC connector 70 m, APC, NE4, Lengths 70 m

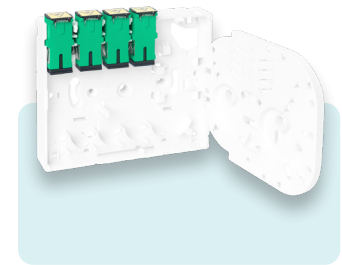


## DIGITUS® FTTH enclosure

### With 4 x SC SX couplers

#### FTTH Outlet, with 4x SC (APC) SX adapter surface and DIN-rail mount

FTTH housing for fiber splices, terminations, storage and connections in a compact protective housing



#### Technical details

- Suitable for 4 ports: 4 x SC SX (integrated) / alternative: 4 x LC DX (not incl.) (without flange)
- Integrated splice cassette
- Protection type: IP45
- Installation: Wall or profile rail (DIN rail)
- Suitable for single-mode and multi-mode fiber optic cables
- Return loss: >50dB(UPC), 60dB(APC)

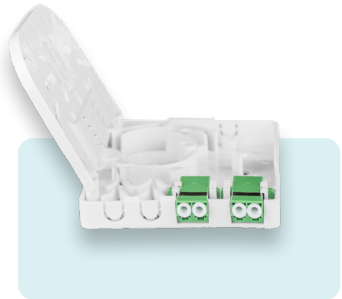
DN-931094 | EAN 4016032466536 | FTTH Outlet, with 4x SC (APC) SX adapter surface and DIN-rail mount

## DIGITUS® FTTH Enclosure

### With 2 x LC/APC DX couplers

#### FTTH Enclosure, with 2x LC(APC) DX adapter Surface mount

FTTH wall outlet designed minimalistically for distribution of up to 4 fibers. The compact protective housing is perfect in FTTH and office premise cabling for fiber splices, terminations and connections.



#### Technical details

- Design : Wall outlet
- Mounting style : Surface mount
- Transmission technology : Fiber optic
- Integrated splice cassette
- Type of fiber : Singlemode
- Connector interface : LC Duplex
- Connector type : LC/APC
- Number of ports interface : 2
- Number of equipped ports interface : 2
- Cable access/outlet : Rear, top, bottom

DN-931096 | EAN 4016032494676 | FTTH Enclosure, with 2x LC(APC) DX adapter Surface mount

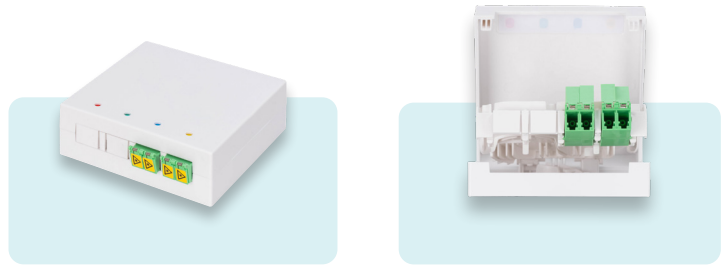
## DISTANCES & SERVICES

NETWORK STANDARD		FAST ETHERNET 100BASE-FX	1GB ETHERNET 1000BASE-SX	10GB BASE-SE-SR	40GB BASE-SR4	100GB BASE-SR10
Singlemode	OS2	-	5.000 m	10.000 m	-	-
	OM1	2.000 m	275 m	-	-	-
Multimode	OM2	2.000 m	550 m	-	-	-
	OM3	2.000 m	550 m	300 m	100 m	100 m
	OM4	2.000 m	550 m	400 m	150 m	150 m
	OM5	-	550 m	800 m	200 m	150 m

**DIGITUS® FTTH wall outlet**  
**2 x LC/APC DX coupler with shutter**

**FTTH Outlet, with 2x LC (APC) DX adapter**  
**Surface mount**

FTTH housing in a minimalist design for the distribution of up to 4 fibers. The compact protective housing is perfect for FTTH and office cabling for fiber optic splices, terminations and connections.



**Technical details**

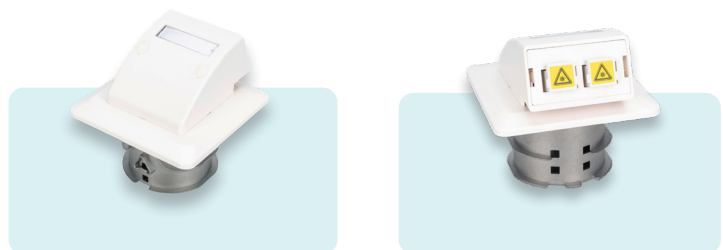
- Design : Suitable for wall and DIN rail mounting
- Wall mounting: Surface mounting
- Transmission technology : Fiber optics
- Integrated splice cassette
- Fiber type : Singlemode
- Connector interface: LC Duplex
- Connector type : LC/APC with shutter
- Number of ports: 4
- Number of equipped ports: 2
- Housing material: PC + ABS

DN-931097 | EAN 4016032498599 | FTTH Outlet, with 2x LC (APC) DX adapter Surfacemount

**DIGITUS® FTTH fiber optic flush-mounted wall outlet**  
**For SC/LC adapter**

**Fiber Flush Mount Wall-Outlet For SC and LC Adapter**

Compact fiber optic connection point, specially developed for FTTH installations, with a discreet flush-mounted design for seamless integration into residential or commercial buildings. Ideal for providing high-speed fiber optic connections.



**Technical details**

- Product type : Fiber optic flush-mounted wall junction box
- Application area : Indoor - Fiber optic connection for FTTH
- Mounting type : Flush mounting (flush to the wall)
- Compatible fiber type : Singlemode (OS2), Multimode (OM3/OM4)
- Compatible adapter type : SC/APC, SC/UPC, LC/APC, LC/UPC
- Number of ports : 2
- Bending radius protection : At least 15 mm

DN-93201 | EAN 4016032499121 | Fiber Flush Mount Wall-Outlet For SC and LC Adapter

**DISCOVER OUR FIBER OPTIC PRODUCT RANGE**

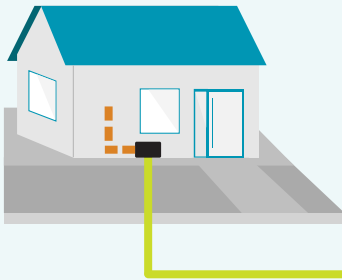
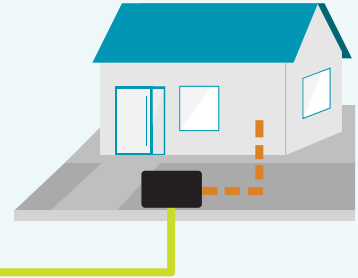


Learn more

## FTTH, FTTB, FTTC

For fiber optic connections, a distinction is made between FTTC, FTTB and FTTH. The decisive factor here is the location to which the fiber optic cable was laid.

With **Fiber to the Curb (FTTC)**, the fiber optic cable is literally laid right up to the curb. There, the data is transmitted from distribution boxes to the respective buildings via copper cables. Due to the use of copper, the lines are generally slower and more susceptible to interferences.



With **Fiber to the building (FTTB)**, the fiber optic cable does not first run into a distribution box, but directly into the respective building. There, the data is then routed to the apartments via copper cables. This is where the disadvantages of copper cables come into play again.

With **Fiber to the Home (FTTH)**, the fiber optic cable is laid directly to the home. By dispensing with copper cables, the performance of the line is not restricted. FTTH is therefore the most stable, fastest and most modern fiber optic connection.



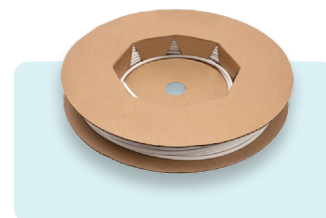
# DIGITUS® FIBER OPTIC CABLE



## DIGITUS® FTTH drop cable, singlemode 4 fibers, 4 LC/APC

### FTTH-Drop Cable, Singlemode, 4 fiber, LC/APC 2,4 mm, G.657.A2

High-quality cables offer an excellent option for fiber optic connections in the intended network level 4. Installation is facilitated by pre-assembled connectors for all 4 fibers at one end of the cable.



#### Technical details

- Fiber type : Singlemode 9/125
- Category : G657A2
- Number of fibers : 4
- Fiber colors : red, green, blue, yellow
- Connector type : LC/APC
- Coat color : White
- Sheath material : LSZH
- Stranding element : Kevlar yarn
- Cable structure :B2ca
- Cable diameter : 2,4mm
- Diameter of the pulling aid : 7-8cm (length)

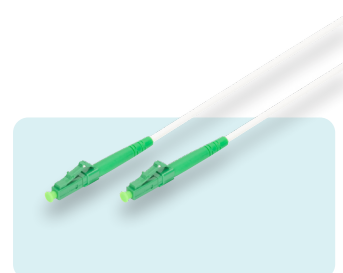
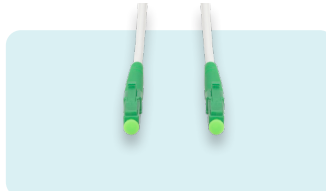
DK-3904LCA-30-1 | EAN 4016032509097 | FTTH-Drop Cable, Singlemode, 4 fiber, LC/APC 2,4 mm, G.657.A2, 30 m

DK-3904LCA-50-1 | EAN 4016032509103 | FTTH-Drop Cable, Singlemode, 4 fiber, LC/APC 2,4 mm, G.657.A2, 50 m

## DIGITUS® Fiber optic steel-armored patch cable Simplex, singlemode, LC/APC - LC/APC

### FO patch cord, Armored, SM, Simplex, LCA - LCA G657.A02

The steel-armored fiber optic patch cable offers excellent protection against physical damage, a long service life and low signal loss, making it ideal for harsh environments and high-performance FTTH networks.



#### Technical details

- Fiber type : Singlemode 9/125
- Cable length : 20 m
- Number of fibers : 1
- Cable construction : Simplex
- Category : G657A2
- Connector 1 Type : LC/APC
- Connector 2 Type : LC/APC
- Cable diameter: 3.0 mm
- Sheath color : White
- Sheath material : LSZH
- Insertion loss 1310 nm : 0.3 dB

DK-2933A-01-LCA-SX | EAN 4016032501152 | FO patch cord, Armored, SM, Simplex, LCA - LCA G657.A02, 1 m

DK-2933A-05-LCA-SX | EAN 4016032501176 | FO patch cord, Armored, SM, Simplex, LCA - LCA G657.A02, 5 m

DK-2933A-10-LCA-SX | EAN 4016032501169 | FO patch cord, Armored, SM, Simplex, LCA - LCA G657.A02, 10 m

DK-2933A-20-LCA-SX | EAN 4016032501183 | FO patch cord, Armored, SM, Simplex, LCA - LCA G657.A02, 20 m

## DIGITUS® Fiber optic steel-armored patch cable

### Simplex, singlemode, SC/APC - SC/APC

#### FO patch cord, Armored, SM, Simplex, SCA - SCA G657.A02

The steel-armored fiber optic patch cable offers excellent protection against physical damage, a long service life and low signal loss, making it ideal for harsh environments and high-performance FTTH networks.



#### Technical details

- Fiber type : Singlemode 9/125
- Cable length : 1 m
- Number of fibers: 1
- Cable construction : Simplex
- Category : G657A2
- Connector 1 Type : SC/APC
- Connector 2 Type : SC/APC
- Cable diameter: 3.0 mm
- Sheath color : White
- Sheath material : LSZH
- Insertion loss 1310 nm : 0.3 dB

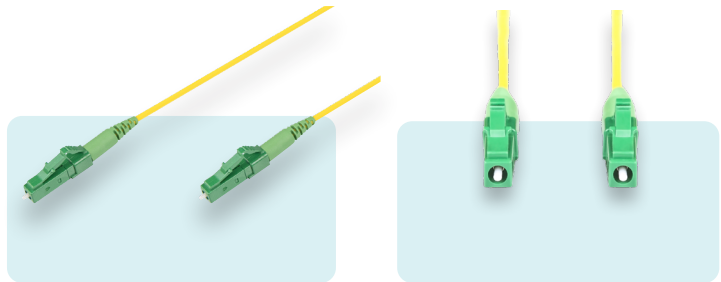
DK-2922A-01-SCA-SX | EAN 4016032501206 | FO patch cord, Armored, SM, Simplex, SCA - SCA G657.A02, 1 m  
 DK-2922A-05-SCA-SX | EAN 4016032501213 | FO patch cord, Armored, SM, Simplex, SCA - SCA G657.A02, 5 m  
 DK-2922A-10-SCA-SX | EAN 4016032501220 | FO patch cord, Armored, SM, Simplex, SCA - SCA G657.A02, 10 m  
 DK-2922A-20-SCA-SX | EAN 4016032501237 | FO patch cord, Armored, SM, Simplex, SCA - SCA G657.A02, 20 m

## DIGITUS® Fiber Optic simplex patch cable

### Singlemode, LC/APC - LC/APC

#### FO patch cord, SM, Simplex, LC/APC to LC/APC G657.A02

High-quality fibre simplex patch cables offer an excellent connectivity option for indoor and FTTx applications. The longevity of cables is ensured by reliable connector performance.



#### Technical details

- Fiber type : Singlemode 9/125
- Category : G657A2
- Number of fibers: 1
- Cable structure : Simplex
- Connector 1 type : LC/APC
- Connector 2 type : LC/APC
- Maximum tractive force : 100 N
- Cable Ø : 2.0 mm
- Minimum Bend Radius : 7.5 mm
- Sheath color : Yellow
- Jacket material : LSZH

DK-2933-01-APC-SX | EAN 4016032492825 | FO patch cord, SM, Simplex, LC/APC to LC/APC G657.A02, 1 m  
 DK-2933-03-APC-SX | EAN 4016032492832 | FO patch cord, SM, Simplex, LC/APC to LC/APC G657.A02, 3 m  
 DK-2933-05-APC-SX | EAN 4016032492849 | FO patch cord, SM, Simplex, LC/APC to LC/APC G657.A02, 5 m  
 DK-2933-10-APC-SX | EAN 4016032496632 | FO patch cord, SM, Simplex, LC/APC to LC/APC G657.A02, 10 m  
 DK-2933-15-APC-SX | EAN 4016032496649 | FO patch cord, SM, Simplex, LC/APC to LC/APC G657.A02, 15 m



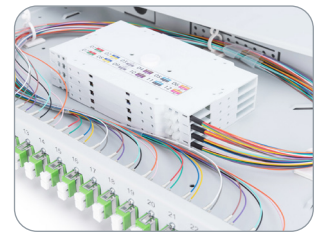
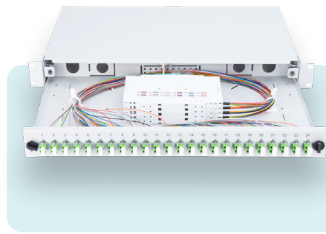
# DIGITUS® DISTRIBUTOR & SPLICE PROTECTOR



## DIGITUS® Fiber optic splice box, 1U, equipped 6x LC-APC DX, OS2

**FO Splicebox, equipped, 6x LC DX, OS2, APC incl.  
Splice cassette, Pigtails, Connectors**

The pre-equipped fiber splice box allows for quick installation, reduces setup time and ensures high reliability while protecting fiber splices and minimizing signal loss.



### Technical details

- Pre-assembled, with fiber pigtails exposed and inserted into the splice cassette(s)
- Connections: 6 x LC/APC DX
- Fiber type: SM OS2
- Colored pigtails
- Couplings with ceramic sleeve and polymer housing
- Support housing made of 1.0 mm sheet steel, painted
- Pull-out splice box
- Height: 1U

DN-96330/9APC | EAN 4016032432258 | FO Splicebox, equipped, 6x LC DX, OS2, APC incl. Splice cassette, Pigtails, Connectors

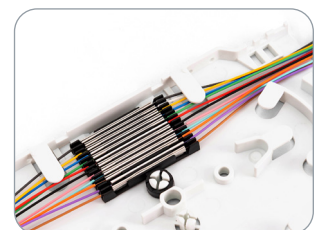
DN-96331/9APC | EAN 4016032428862 | FO Splicebox, equipped, 12x LC DX, OS2, APC incl. Splice cassette, Pigtails, Connectors

DN-96332/9APC | EAN 4016032428879 | FO Splicebox, equipped, 24x LC DX, OS2, APC incl. Splice cassette, Pigtails, Connectors

## DIGITUS® Fiber optic crimp splice protection, 150-pack With telecom approval TS0338/96

**Fiber Optic Crimp Splice Protection 150 pcs package**

Efficient splice protection for optical fibers with crimp technology. Compatible with standard splice cassettes, ideal for compact installations.



### Technical details

- Compliant with TS 0388/96
- Fixation: Mechanical clamp fastener
- Fastening: Snap-in or insertable in standard splice cassettes
- Damping behavior: No additional insertion loss
- Dimensions (LxWxH) : 30 mm x 1.2 mm x 3.3 mm
- Reliable mechanical protection
- Temperature range: -20 °C to +60 °C

DN-CSP-150 | EAN 4016032504948 | Fiber Optic Crimp Splice Protection 150 pcs package

DN-CSP-015 | 4016032504955 | Fiber Optic Crimp Splice Protection 1 Tray with 15 pcs



# DIGITUS® SPLICE CLOSURES & ACCESSORIES



## DIGITUS® Fiber optic splice closure 48 cores, dome-shaped

### Mechanical fiber optic dome closure for max. 48 fibers

The robust design makes the closure resistant to harsh environments and intense climate changes. The flexible arrangement of the splice cassettes allows individual operation of each optical cable and fiber strand.



#### Technical details

- When the sleeve is mounted on a pole made of metal, there is a direct conductive connection
- It can bear the tensile force of at least 1000N
- Max Capacity: 48 Cores
- Number of Cable Entrance/Exit : 1:3 or 2:2
- Diameter of Cable : 4 small round ports (16mm)
- Air Pressure : 70kPa ~106kPa
- Dimensions (D x H): 300 x190 mm
- Lifetime : 25 years

DN-941091 | EAN 4016032486794 | Mechanical fiber optic dome closure for max. 48 fibers

## DIGITUS® colored pigtails LC/APC OS2 09/125 μ, Simplex

### FO pigtail set, 12 pcs., LC (APC), SM OS2 09/125 μ loose buffer, color code DIN IEC 304, 2 m

Future-oriented standards and high-end quality for your network.



#### Technical details

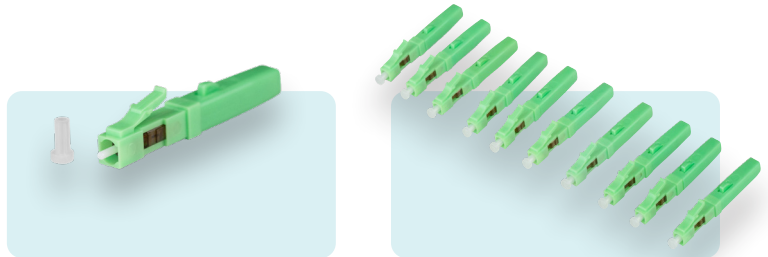
- Simplex OS2 09/125 μ 2 m
- Standard connector acc. IEC 61754-4 2002
- Operating temperature: -25 °C ... +80 °C
- Storage temperature: -20 °C ... +65 °C
- Insertion loss MM PC: max. 0.4 dB
- Return loss MM PC: > 25 dB
- Zirconia ceramic ferrule
- Secondary coating dimensions: Ø 0.9 ± 0.1 mm
- 12 pcs in package
- Loose buffer

DK-29332-02/APC | EAN 4016032428848 | FO pigtail set, 12 pcs., LC (APC), SM OS2 09/125 μ loose buffer, color code DIN IEC 304, 2 m

## DIGITUS® LC/APC Fiber Optic Fast connector (10 Pieces)

### Fiber Optic Fast Connector, SM LC/APC 10 piece pack

Fast connectors are designed to enable quick and easy termination of fibers in the field. For uncomplicated fast repair of existing installations as well as for new installations, e.g. for FttX in-house cabling.



#### Technical details

- Connector Type : LC
- Polishing : APC
- Fiber Mode : 9/125µm Singlemode
- Ferrule : Ceramic (1,25mm)
- Insertion Loss  $\leq 0.2$ dB
- Return Loss  $\geq 50$ dB
- Cable Diameters : 0.9/2.0/3.0mm
- Product colour : Green
- Storage Temperature : -40 to 85°C
- Operating Temperature : -20 to 75°C
- Dimension : 45mm long

DN-FC-9101-APC | EAN 4016032494638 | Fiber Optic Fast Connector, SM LC/APC 10 piece pack

## DIGITUS® Optical Fibre Cleaver With 3-in-1 multifunctional fixture

### Optical Fibre Cleaver

The cleaver allows to prepare glass fibres in one step for splice connection processes. Therefore, it enables a quick and easy assembling of the fiber cables



#### Technical details

- Supported fiber diameter : 125µm
- Supported fiber diameter incl. Coating : 250µm, 900µm
- Supported fiber type : silicon optical fiber
- The average cutting Angle (slitting angle):  $\leq 0.7$  degrees (single-core fiber)
- The maximum cutting Angle (sliding angle) :  $\leq 1.2$  degrees (single-core fiber)
- Cutting broken rate :  $\leq 5\%$

DN-FO-FC | EAN 4016032486817 | Optical Fibre Cleaver

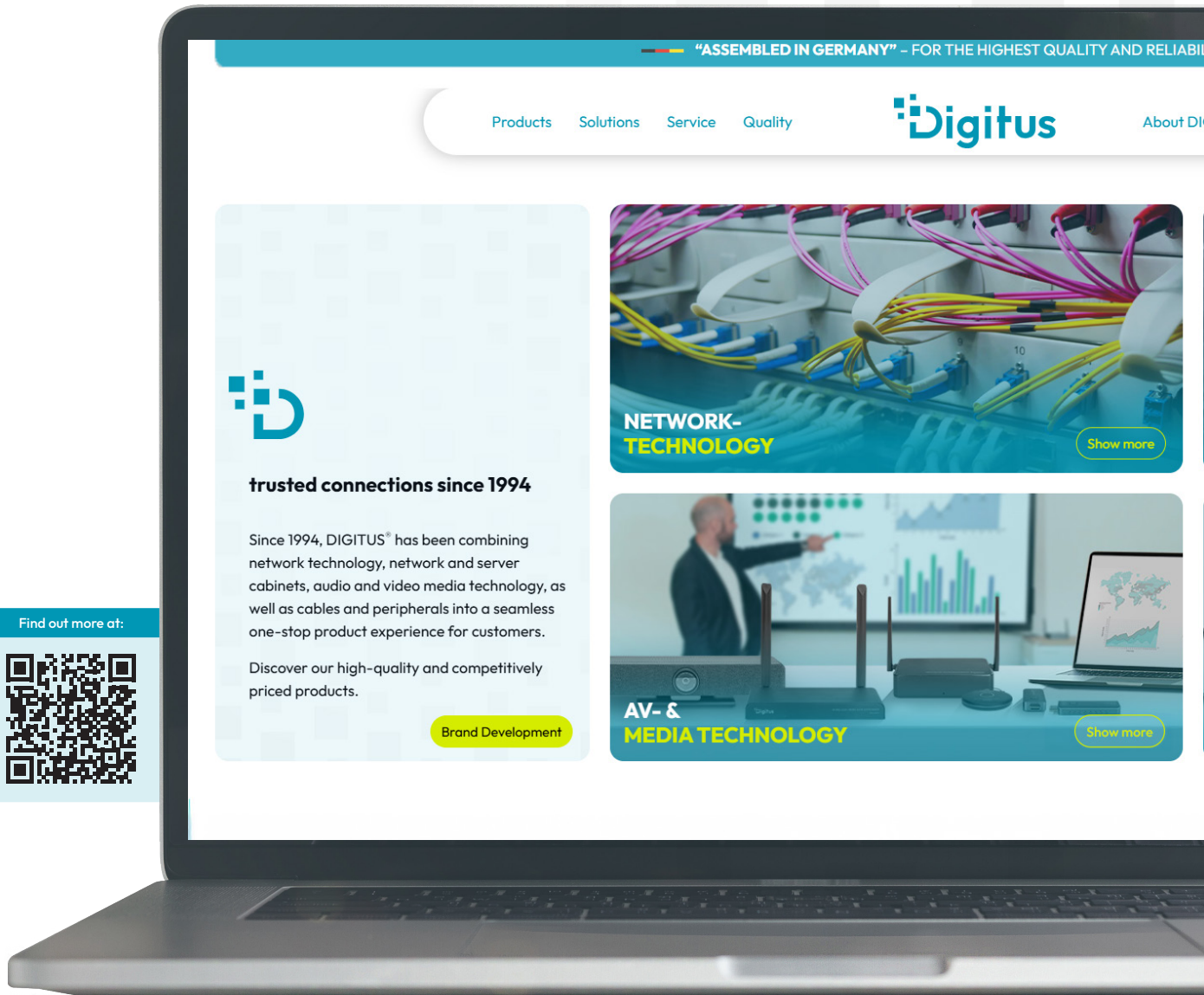
# ARE YOU LOOKING FOR SOMETHING SPECIFIC?



Learn more



# TRUSTED CONNECTIONS SINCE 1994



Find out more at:



## trusted connections since 1994

Since 1994, DIGITUS® has been combining network technology, network and server cabinets, audio and video media technology, as well as cables and peripherals into a seamless one-stop product experience for customers.

Discover our high-quality and competitively priced products.

Brand Development

